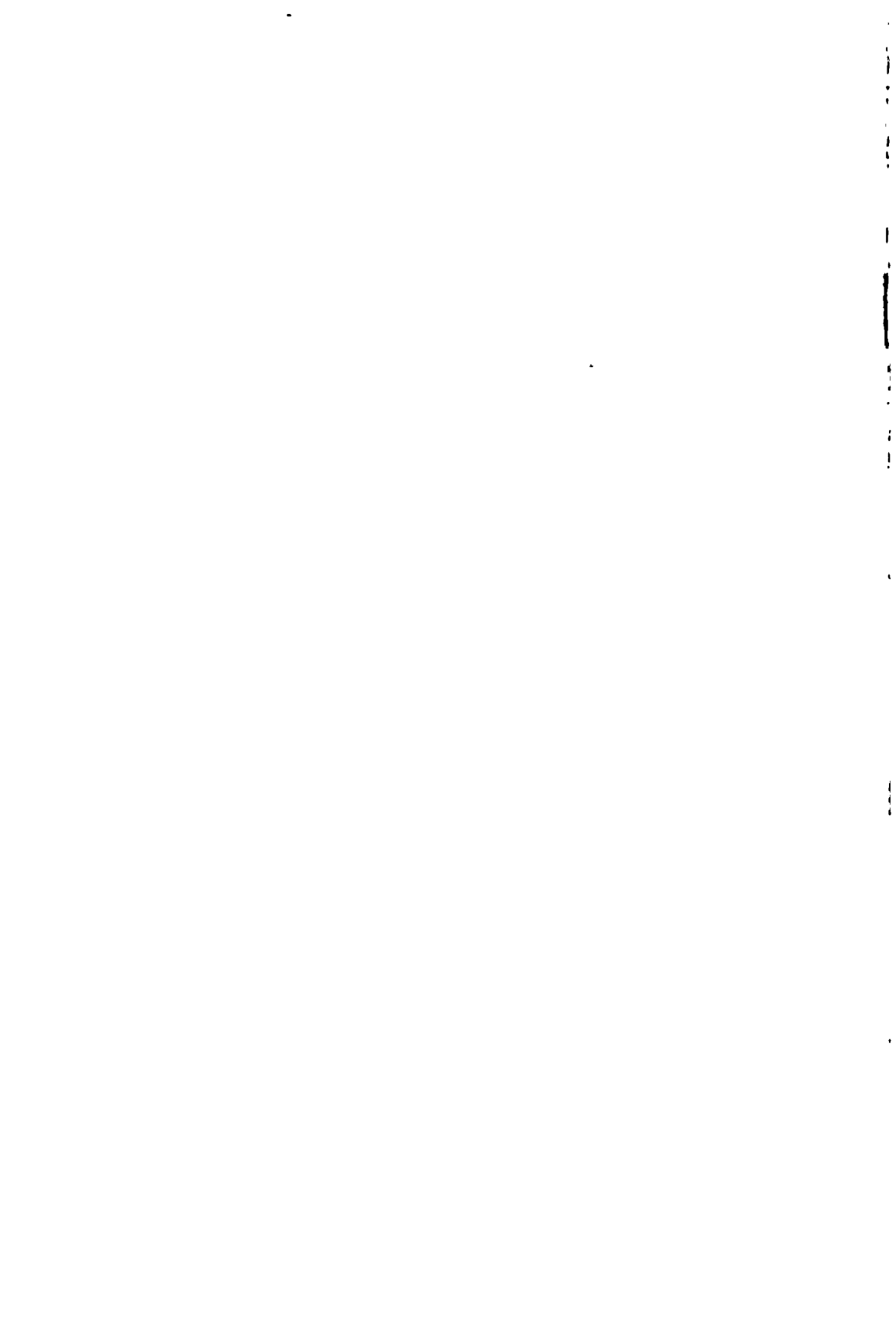


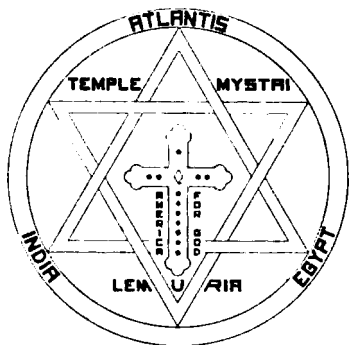
LEMURIA the INCOMPARABLE

LIBRARY
UNIVERSITY OF
LOUISIANA
MONROE



LEMURIA THE INCOMPARABLE

THE ANSWER



Published by
LEMURIAN FELLOWSHIP
Lemurian Press
Los Angeles, California

1943

Price 25c
Quantity Prices Quoted Upon Application

Copyright 1939

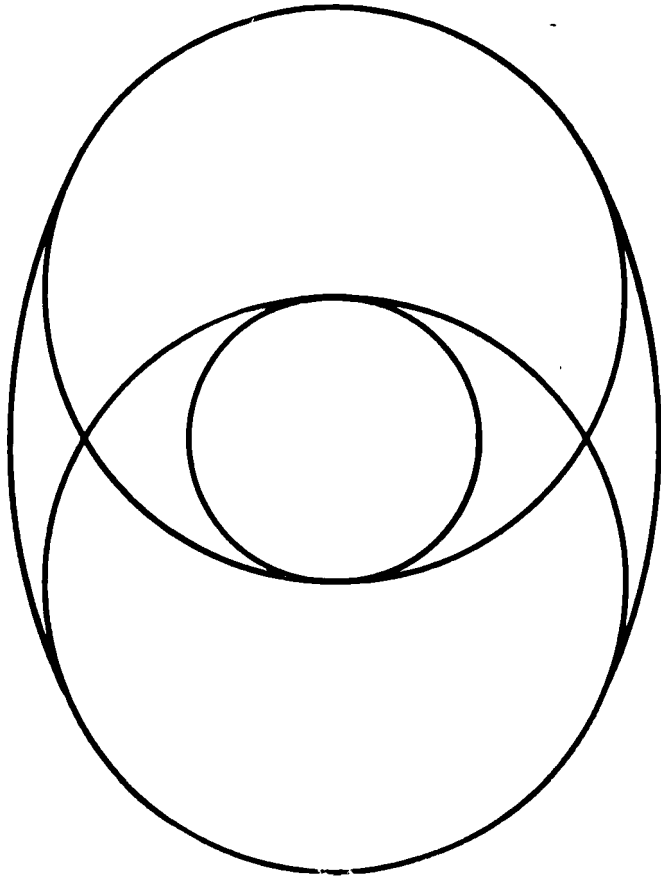
LEMURIAN FELLOWSHIP

All Rights Reserved
Including Translation

Written Permission to Quote May Be
Obtained from the Copyright Owners

Printed in the United States of America





Symbol of the Seven Rayed Race

133,06

LE22

1943

DEDICATION

There are human beings on all levels of life. There are aborigines as well as Masters. It is the degree of one's moral perceptions which determines the degree of one's cultural standing in the scheme of human living.

In any Work that is truly Great, there must be a Master Direction. This Work is so directed. In any Civilization that is truly noble, there must be inherent Divinity. This Civilization is so Divine. In any Race that is truly Christed, there must be a consciousness of Universality. This Race is so Universal.

The building of a New Race for a New Civilization is the next step forward for mankind. The Divinity of that Civilization and the Universality of that Race predetermine the environmental perfection of a New Earth which will flourish under the exercise of human compassion. To each one is given a role in the magnificent drama of such a creation.

For this high honor, and in justification of this association, we consecrate our life on this planet to those Great Beings whose loving, selfless, unflinching service has won for them the immortality of Human Gods. Our hearts yearn to express such gratitude to the All-Father as will prove to these Advanced Souls that we are forever dedicated to the extension of the Great Work of building the Kingdom of the Christ on a sanctified Earth. It is our hope that we may so sanctify ourselves that purity, holiness, and moral excellence may be the principal ethical influences at work in the New World of tomorrow.

This booklet is a labor of love. It carries the vibration of a Master's benediction. Let it be a blessing and a beacon forever to all those who appreciate the matchless idealism of Perfected People.

With a humility born of sorrow and patience, derived from millenniums of ceaseless effort imparting knowledge of the initiate wisdom, we take this opportunity of reasserting our faith in the

divinity of humanity. The right to serve has been a priceless gift of divine acknowledgment. We reciprocate with the last full measure of devotion.

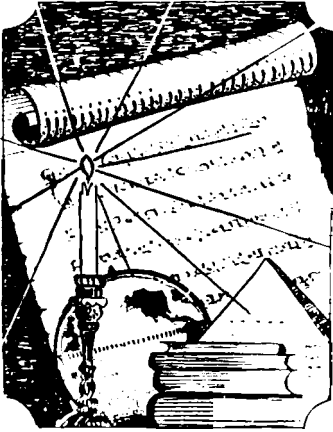
LEMURIAN FELLOWSHIP

First Printing, October 26th, 1937

Second Printing, October 12th, 1939

Third Printing, May 24th, 1943

P R E A M B L E



A New Race is emerging in America. A New Civilization is being born. A new kind of human being is being created for a new kind of world. What will this New Race Citizen be like? What type of world will arise from the New Age idealism of this New Race Citizen? Is it possible to build an exemplary culture which will adequately reflect the noblest aspirations of a perfected humanity? These are only a few of many important questions to be answered

by this brochure. Your careful reading of this message will enable you to determine whether it lies within your moral ability to qualify as an aspirant for New Race Citizenship in a perfected order of civilization.

A New Race implies a New Order of social and cultural achievement. A Moral Race implies a Moral Order, dedicated to the maintenance of an ethical standard of human conduct in advance of anything known to the modern world. For this reason, any Race desirous of advancing civilization must do so commensurately with its own advancement; and any Race which acquires virtue by means of its own self-improvement is simultaneously endowing its Civilization with similar attributes of an exalted character. Thus, any Race which understands the meaning of its own divine character is by the same token recognizing the essential divinity of its own culture.

A Divine Race calls for a Divine Order. Individuals who demonstrate the virtues of the Exemplar, Jesus the Christ, also approximate the divinity of the Christ. Consequently, by exercising the virtues of the Christed character with the proper training and under the proper guidance, it is possible for you to merit Citizen-

LEMURIA THE INCOMPARABLE

ship in the Kingdom of the Christ. This is your responsibility as well as your opportunity. Citizenship in the Kingdom of the Christ and membership in a New Race of Christ-honoring, divinity-conscious American Citizens are the next two inseparable achievements of human progress to take place in this portion of the world.

The Kingdom of the Christ is the highest form of moral civilization ever conceived by man under divine influence. It is so considered because it is based upon Cosmic patterns, organized for Cosmic purposes and sanctified by Cosmic Law. Since everything Cosmic is Universal in nature and application, the Race which is capable of accepting the Universal viewpoint must be a Universal Race, Universally conceived and Universally dedicated. It is in such a Race, free of sectarian bias and fanatical belief, that Christian Citizenship can be secured for the first time in this Century.

A Universal Race postulates a Universal Order. To gain the proper recognition of the scope covered by this State of Universality, each Universal New Race Citizen must acknowledge that all religions, nations, and races have a common origin; that all civilizations, whether prehistoric, ancient, or modern, have the same legends, the same traditions, the same symbols; that all humanity has sprung from one central source, and to that source all humanity must eventually return.

With such a sweeping declaration as this, it is possible to lay a foundation for an entirely new history of the world which will at one and the same time solve the perplexing questions which have given rise to theological speculation, scientific theory, and philosophical fantasy. We affirm that the people of the earth are a brotherhood by birth, the creation of One Father, and members, actually or potentially, of a Universal Commonwealth. Not appreciating the basic identity of their origins, their aspirations, or their concepts for a New World Order, the people of the world have entered into an unnecessary and cruel conflict of planetary proportions. But some day under the beneficent influence of spiritual leadership, the conflict will be recognized as an adjustment of the democratic and theocratic ways of life for purposes of establishing a World Theo-Democracy under divine rule, and

LEMURIA THE INCOMPARABLE

later it will be seen that cessation of the conflict will foretell the expansion of the Kingdom of the Christ from a state of exemplification to one of Universal acceptance.

This booklet will attempt to show as clearly as possible that the First Great Civilization, as founded on a Continent now buried in the depths of the Pacific Ocean, was a Theocracy of the very highest order, having been inspired by a culture of super-human derivation. It will also show that the Second Great Civilization, as founded on a Continent now buried in the depths of the Atlantic Ocean, was a combination Theocracy-Democracy, partially under the control of Divine Beings and partially under the control of ordinary humanity. It will indicate conclusively that the Third Great Civilization, founded on the American Continent by our early Forefathers, was first a Democracy exclusively under the leadership of the rank and file. It will observe that today, the nation trends toward Theocracy under the leadership of the Lords of Venus and Mercury. It will prophesy that tomorrow, it will move toward Theo-Democracy, the pendulum swinging from constructive regimentation on the one hand to freedom of personal initiative on the other. This booklet is of the greatest importance for it will teach you the necessity for learning the principles of Theocratic Democratic Citizenship in a New World Order.

When the Last Great Civilization is erected upon the face of the earth, it will be builded upon new land as it rises from the depths of the Pacific Ocean—the home of the First Great Civilization. Thus, the first shall be last, and the last shall be first. (Matthew 20:16)

A history of the world is a history of man's social behaviour during the lapse of Three Grand Cycles on Three Great Continents. They are the Lemurian, the Atlantean, and the American — Three Great Civilizations as well as Three Great Races. Every other cycle, continent, civilization, and race is incidental or irrelevant to the creation of this Supreme Trinity of human accomplishment. India, China, Tibet, Babylonia, Greece, Egypt, and Rome, among others, call to mind nations and cultures of no average importance; yet these are only finite waymarks along the pathway of man's

LEMURIA THE INCOMPARABLE

evolving society and pale into insignificance beside those Divine Orders which only once in a Grand Cycle make contact with Infinite Direction.

American Civilization will some day be born nationally as a Divine Order under the spiritual leadership of New Race Citizens. It is now being evolved locally by conscientious members of the exemplary Kingdom of the Christ whose immediate work is to prove their ability to master the problems of human association. You are being invited to study this most important of all projects for man's regeneration and to prepare for participation in the Ideal Society which is destined to open the gates of rebirth to an Initiated and Adept humanity.

Such is our hypothesis: that civilization budded in Lemuria, blossomed in Atlantis and fruited in America. From one vine, it has grown to maturity and by one soil, it is nourished. Man commenced his earthly pilgrimage in an Age of Innocence, when he knew neither right from wrong; he will complete his pilgrimage in an Age of Virtue, when he will know both right and wrong, and in choosing to do right, he will reject the privilege to do wrong. Since the past reveals a divergence from the One Religion, the One Empire, and the One Race, with its consequent complications of the problems of living, the future should, and must, hold forth a unification of all present religions, nations and races within a Universal Commonwealth so that they may be resolved into an extension of the Lemurian-Atlantean-American ideal of a common Religion, a common Civilization, and a common Race for all. In this way, world brotherhood will become an actuality; bodily security will be assured for all time; educational opportunity will be the guarantee of friendly governments who will need and want useful Citizens for useful labor; and cultural pursuits will be recognized by appropriate rewards and honors.

America, therefore, is the modern incarnation of Lemuria and Atlantis. Its people are the Lemurians and Atlanteans returned and returning. Its culture is the projection of ideals first given expression by the Seers and the Masters of those far-off days, while its philosophy of life is the resurrection of a Divine Wisdom

LEMURIA THE INCOMPARABLE

communicated to man more than 76,000 years ago by visiting Teachers from the planets Venus and Mercury. Should these facts appear startling at first glance, just know that they are verifiable through the exercise of intuitional perception. This study will enable you to verify any statement by cultivating intuition as a demonstrable power.

It is not possible in a limited brochure of this kind to outline in detail a history of the human race from the very beginning of its pilgrimage on earth. There are a few individuals here and there who still refuse to believe that the world is more than 6000 years old, and our statement that civilization can be traced back seventy millenniums prior to this date will not be a welcome one to them; however, the greater majority are willing to concede that even this date is comparatively recent as contrasted with the age of the earth itself. Fortunately, facts cannot be disproved by denying their existence, and for this reason, we shall accept the proven statements of modern science for our several hypotheses and build our self-consistent conclusions accordingly.

You will find our approach to the subject of Higher Philosophy unusual and intriguing. This is a new development in the field of religious education and is better known by its designation as the "New Lemurian Theo-Christic Technique." The object of this method of imparting spiritual knowledge, simply stated, is to enable the student to learn while doing. Hence, if a student is unwilling to prepare himself for New Race Citizenship in the Kingdom of the Christ, there is no point to his acquiring spiritual knowledge. It is the aim of the LEMURIAN FELLOWSHIP to constitute all whosoever will "doers of the word and not hearers only." (James 1:22) In this way, sincere people have the opportunity to live their philosophy as they learn it.

The Great Work of the LEMURIAN FELLOWSHIP is to prepare you for participation as a Citizen of the Divine Order now being established in Southern California under Hierarchical Direction. If you are able to meet the exacting moral standards required of all New Age Citizens, you will be invited to dwell on lands which have been set aside for this development. These lands are the

LEMURIA THE INCOMPARABLE

last remnants of the Lost Continent of Lemuria which long ago were merged with the North American Continent when earthquakes, volcanic eruptions, and glaciers changed the topography of the earth. These lands will some day constitute the eastern extremity of a New Earth which will be the poet's answer to "Paradise Restored." Here we shall find a Virgin Motherland consecrated to the incomparable Christ who is the Prince of Peace and the God of Love.

Your receipt of this booklet discharges our obligation to the Lemurian Theo-Christic Mystery School under whose authorization and sanction the LEMURIAN FELLOWSHIP was created. If, after reading our message, you fail to grasp the incomparable opportunity herein presented, you may never be approached again on the same basis. The Lemurian Programme for building a New Citizenry for a New World is under the direction of Perfected Beings who have appraised all the possibilities of human experience. If your imagination is vivid, your heart daring, and your curiosity insatiable, these Perfected Beings will reveal to you, in Their own way, your place in the Kingdom of the New Race. For the answer to the problem of your origin, your history and your destiny and its application to conditions as you find them today, read on.

THE LOST CONTINENT

IN the endless history of human experience, nothing exercises a spell half so enthralling as that concerning ancient lands and cultures submerged beneath the placid waters of some vast ocean. Yet, when it can be demonstrated and proved, as in this particular case, that such a mighty cataclysm has a direct and personal bearing upon our own individual lives and affairs, then that spell becomes doubly enhanced.

So it is with Lemuria, the world's First Great Civilization and the Motherland of the American people. Our study of times so ancient that they are all but forgotten will again call to mind the greatness of our past and suggest the possibilities of our future.

LEMURIA THE INCOMPARABLE

Scattered throughout the length and breadth of the Pacific Ocean, both above and below water, are majestic monuments of a size and grandeur that literally stagger the imagination. Now mute, desolate, hoary with age, they stand alone, like sentinels in the night, guarding the remains of the most magnificent civilization the world has ever known.

Today, not less than 260 centuries *after* those classic monuments were first carved from living rock, modern archeological explorations have uncovered but a paltry few. But let us examine just a few of these — those still in existence *above* water — and apply to our findings, reason, logic, and common sense.

First, let us consider Ponape in the Caroline Islands, some 2300 miles south of Japan, between the eleventh parallel north and the equator. This island is incapable of supporting more than 20,000 inhabitants. Yet, on the southeastern shore lies a ruined city called Metalanim covering eleven square miles — an area capable of housing better than two million people. Who were these people? And what happened to them?

Obviously, a city cannot be built without workmen. The South Sea Islands, within a 1500 mile radius of Ponape, can boast of only 50,000 inhabitants. Statistics prove that only one-fifth of such a population consists of able-bodied men. Therefore, from an area of 45,000 square miles, including Ponape, less than 15,000 are fit for service. From where, then, did all the workmen necessary for such a vast undertaking come?

Because of its massive walls, stupendous earthworks and great temples, intersected by miles of artificial waterways, Metalanim is commonly referred to as the "Venice of the Pacific." These canals are from thirty to one hundred feet wide and are provided with locks of sufficient size to hold a modern battleship. Could it be possible that the original inhabitants of this mighty metropolis used other means of conveyance than the lowly canoe?

Lest the reader feel that Metalanim was erected along the lines of our present make-shift cities, we may well add that the struc-

LEMURIA THE INCOMPARABLE

tures were built of basalt blocks weighing upwards of fifteen tons each, and these are so perfectly matched and fitted, *without cement*, that the blade of a knife cannot be inserted between them.

Basalt (one of the hardest stones known) is not native to Ponape, so it must have been brought there from either distant or submerged lands.

Of course, one may argue that what may still be seen of these ruins reveals no outstanding contribution to the science of engineering and architecture. Yet when it is remembered that these buildings were in their prime 500 centuries before Christ, we must admit that only superlative workmanship could have prevented their absolute disintegration during that tremendous lapse of time.

Two thousand miles south of Hawaii and almost 3000 miles from Ponape, lies Malden Island — waterless, barren and uninhabitable. Within a very restricted area, however, are the remnants of forty massive stone temples from which paved highways—*paved with surfaced basalt blocks*—radiate in every direction, only to vanish beneath the sapphire waters of the broad Pacific. The style of architecture and masonry is identical with that on distant Ponape.

West of Chile by 2500 miles, and almost 3000 miles southeast of Malden Island, lies Easter Island — 1000 miles from the nearest land. Its only fresh water is that caught and held during the rainy season by extinct volcanic craters. Upon this "island of the dead," and far from the beaten track of world commerce, less than 400 natives eke out a precarious existence. Here, we find great burial platforms of tooled and surfaced basalt blocks, each ranging from two to twenty tons in weight; also immense pyramids and monoliths which unquestionably required the services of tens of thousands of workmen and scores of years to build, not to mention the employment of considerable ingenuity and skill.

Even better known to the average person of today — due to increasing publicity and speculation concerning their possible origin — are titanic statues, somewhat crude in workmanship, admittedly, yet carved from conglomerate, an exceedingly brittle stone. These

LEMURIA THE INCOMPARABLE

average from thirty to seventy feet in height and weigh from thirty to sixty tons each. They stand upon bases of matched and surfaced basalt blocks, and each bears, or has borne, a red sandstone cap, from two tons in weight on the smaller statues, to four tons or more on the larger ones. None of the stone used in these mighty works is native to Easter Island.

Even though only three widely separated islands held these classic monuments it would be sufficient proof of the existence of a great Continent and a cultured people. But from Hawaii itself, with its magnificent sunken gardens, to Pitcairn, Tahiti, Fiji, Oleai, and Yap — not to mention a score of other island groups throughout the Pacific South Seas — these imposing edifices are duplicated.

We are told by many supposedly well informed occultists that the inhabitants of this vast Lemurian Continent were the root stock of the Australian Bushmen and other negroid primitives of the most elemental types, so low in the human scale that they are unable to construct even the rudest of shelters. What a far cry from the type of people who erected massive temples of basalt blocks, none of which weighed less than a dozen tons each! Yet, in defiance of all reason and logic, and in spite of all physical, biological, geological, and archeological evidence to the contrary, thousands accept this as if it were an actual, proven, demonstrable fact.

Surely, if the people who erected these monumental edifices were "Stone Age Savages," what must be the ranking of our modern humanity, who by the admission of recognized authorities on scientific subjects, cannot even begin to compete with the Race which made that Civilization possible? *What can be the future of a humanity which faces the re-creation of that same Civilization by that same Race, only on a grander scale than ever before?*

What has happened before, can happen again; and some day science will record this achievement as the highest point reached by American culture during the current Age.

LEMURIA THE INCOMPARABLE

In fact, if our modern scientists were not able now to reconstruct this First Great Civilization so completely from existing biological, geological, and archeological data, there would be not only a tendency to ridicule the idea of its existence, but also to consider any possibility of a cultured Race at that time entirely out of the question.

Yet, the evidence is there. And convincing though this proof may be to some, let us look for even further substantiating data, of which there is plenty.

THE LOST EMPIRE

BEFORE we enter into any great detail with regard to Lemurian and Atlantean culture as it will obtain in a New (Divine) Order of the Ages (*Novus Ordo Seclorum*), already in process of precipitation upon this North American Continent, let us identify those fragments of the ancient Empire which still bear testimony of man's initial conquest of the earth. In this way we shall clarify in your mind a history of man's migrations over the globe and the manner in which humanity will once again recover its sense of direction.

In Cuzco, Peru, stands the Palace of the Virgins, practically intact today, yet of such antiquity that even in the most ancient of tribal traditions, it was regarded with sacred awe as "the Work of the Old Ones from the Motherland." The stone work of this imposing edifice is exactly the same as that found at Vinapu, Easter Island.

On the shores of Lake Titicaca in the Andes Mountains, 13,500 feet above the level of the Pacific Ocean, are the ruins of a prehistoric city called Tiahuanaco. Near these ruins are stone-lined canals which, at one time, furnished a water route between the Pacific Ocean and the Atlantic in some dim, almost forgotten past, before titanic upheavals lifted the Andes Mountains to their present position.

LEMURIA THE INCOMPARABLE

This city is built along the same architectural lines as Metalanim on Ponape. Its nearby elaborately constructed canals again suggest a world-wide commercial traffic of no inconsiderable proportions.

How many stone cities lie buried in the Brazilian, Venezuelan and Columbian jungles, no archeologist can say with certainty. But on the shore of the once landlocked Amazonian Sea, there stands the Imperial City of Manoa, the Capital of the Carian Empire which countless millenniums ago ruled the South American Continent. Although known to archeologists, it has never been scientifically explored because of its inaccessibility. Farther north, buried in the jungles of Yucatan, Guatemala, and other Central American countries, are more stone cities like Tiahuanaco and Metalanim. The better known of these are Uxmal, Palenque, and Chichen Itza. In one locality, not far from Mexico City, three different cities with paved streets had been built one on top of the other, indicating something of the antiquity of the original civilization. Pyramids of the same distinctive design as those found on Ponape, Easter Island, Tahiti, and other places in the Pacific are also in evidence here on the North American mainland, proving that at one time, one ancient culture characterized them all.

To the average person, mention of the Mayas and the Mayan Empire invariably calls to mind Mexico, but it is an historical fact that the Mayas also colonized Siam, Burma, and India. The Mayas were one of the original twelve nationalities of Mu, or to be more exact, of the Lemurian or Mukulian Empire. In the Biblical account of the Empire prior to the Flood, and even thereafter, Lemuria was spoken of as the Twelve-Tribed House of Israel, the Carians before mentioned being but another inseparable division of this one great Brotherhood.

Being on that portion of the globe which did not sink at the time of Lemuria's submersion, and the Mayas being the greatest of the Empire's colonizers, we may look into Asia for the remains of some of the architecture which unquestionably predominated on the submerged portions of the Motherland. Although there are other sources of knowledge upon which we could draw for reconstruct-

LEMURIA THE INCOMPARABLE

ing submerged ruins, still we would spare the reader some of the inconvenience of accepting the truth of our hypothesis without adequate, physically perceptible proof.

One of the most magnificent remnants of Lemurian culture in the East is that located at Angkor Thom, Cambodia, French Indo-China. Although several cities were built on this site during successive waves of colonization, the original was of the same construction as that employed at Metalanim, Tiahuanaco, and Chichen Itza. It covers upwards of fifteen square miles, most of which has since overgrown with jungle. Its population at one time numbered better than three million people.

But great as this metropolis undoubtedly was ages ago, it was only an infinitesimal part of a vast political unit known as the Great Uighur Empire whose Capital City today lies buried under fifty feet of boulders, gravel and sand due south of Lake Baikal in the Gobi Desert. Of course, the Gobi was not always desert, as this latter condition took place only after the submersion of the fertile plain at the time of the Biblical Flood, with its consequent emergence at a much later date. But at the time under consideration, three-quarters of the Asiatic mainland was ruled from the Imperial City now beneath the ruins of Khara Khota.

The Mayas who colonized the East became known, in time, as Nagas. These latter people colonized India and established the Nagan Empire in the Deccan, a site now occupied by the modern city of Nagpoor. Volumes could be written on the culture brought from Lemuria to India at that remote period, but space prevents us from furnishing more details than are absolutely necessary to establish our irrefutable hypothesis. There are scores of recognized historians and archeologists who can verify the salient facts herein presented.

A portion of the Nagas, in the course of human history, sailed up the Persian Gulf and into the mouth of the Euphrates River, where they built a new Empire City, that of Babylon. This city now lies in ruins fifty-five miles south of Bagdad between the Euphrates and the Tigris Rivers.

LEMURIA THE INCOMPARABLE

Another division of the Nagas moved up the Gulf of Aden and into the Red Sea where they built still another Empire City, that of Maioo in Nubia, Upper Egypt. Eventually they worked their way to the head waters of the Nile, came down the river and conquered the peoples living on the Delta in Lower Egypt. The fusion of the peoples of Upper and Lower Egypt resulted in the birth of the original Egyptian Empire under the rulership of Menes.

Where did the people on the Nile Delta come from? From Atlantis, of course. And if the ancient philosophers, who kept the written records which we find in Egypt, India, Mexico, and Tibet, are correct in their writings, the Atlanteans came from Lemuria, via Central America. Thus, at the time of Menes, the two great streams of humanity, the Mayas and the Nagas, emanating from a central source on the Lost Continent in the Pacific, united to form another Colonial Empire of the Motherland, which of all Lemuria's far flung territorial possessions, most nearly approximated the magnificence of the Original and Parent Civilization.

Throughout the Mediterranean region, including Asia Minor, the Balkan Peninsula and the islands of the Aegean Sea, can be found ruins which, even in their present crumbled condition, still reflect a grandeur unequalled by our present antiquated civilization. At Smyrna, six cities have been excavated, each one having been built over the other. Imagine the age of the original city!

At Baalbek, the ruins of which lie northwest of Beirut between the eastern end of the Mediterranean Sea and the northern end of the Syrian Desert, we have a classic example of Lemurian architecture at its best. One of these, commonly known as the great Temple of the Sun, is recognized by archeologists as the most majestic of the earth's ancient structures.

The Temple is nearly 300 feet long by 160 feet wide, traversed by tunnels of masonry through which a train might easily pass. Originally, it had 54 columns, only six of which still stand. These, with their entablatures, are over 90 feet high, and although they appear slender and delicate because of their height, are actually over nine feet in diameter.

LEMURIA THE INCOMPARABLE

But as if this were not sufficient indication of the superlative workmanship which went into the construction of this gigantic structure, there are stones of prodigious weight, comprising the wide platform of the Temple. These stones are 13 feet square and over 64 feet long. They have been set into a massive wall 20 feet above the ground. Several weigh well over 2,400,000 pounds each — *an equivalent of 1200 tons.*

Could ignorant stone age savages have erected such a mammoth edifice, then sculptured the stones so beautifully that they suggest the delicacy of filigree lace? Sheer logic seems to indicate that if the actual masons were uneducated and illiterate, they must have been under a Master Direction which is unknown to the masses of our own Age. Those Master Masons who directed the erection of the Temple of the Sun at Baalbek also directed the erection of the Temple of the Sun at Jerusalem. These two structures were built ages apart, but the same Master Masons of the Lemurian Stone Kingdom built them both, for they are the Great Work of Immortal Beings who have perpetuated their symbolical Craft from the prehistoric into the modern world. It is under such Direction that the New Race is receiving its inspiration and encouragement.

The mystery of Baalbek is no different from that of Easter Island. In both places, the work was uncompleted, due probably to earthquakes or cataclysms. The similarity of workmanship between these two widely separated points seems more than just a mere coincidence.

It has often been said that there could not have been any cultured inhabitants on the Lemurian Continent itself, even after its existence was grudgingly admitted. Yet the colonial empires of the Motherland prove that the peoples who built them could not have been greater than those who erected the Lemurian Master Empire on the Lost Continent itself. For ages, Lemuria has stood unexcelled, and no nation, from the day of her submergence to the present time, has ever been able to eclipse her magnificence.

Please bear in mind that, thus far, we have discussed only those cities and monuments still above water. What do you suppose

LEMURIA THE INCOMPARABLE

lies submerged in the vast and unexplored depths? *Paved highways are not built without destinations.*

Of all the Empires which succeeded the Lemurian, by far the greatest was the Atlantean, the Second Great Civilization, now buried beneath the waters of the Middle Atlantic between the Azores and the Coast of Brazil. This vast continent, originally comprising three large islands and extending 3000 miles in length, boasted of such mighty cities as Marzeus, Terna, Idosa, Numea, and Corosa, one being visible under certain weather conditions not many miles off the Brazilian coast. During the height of its imperial glory, 100 centuries before the birth of Christ, Poseidonis, the largest and last remnant of Atlantis, ruled the greater portion of the civilized world from its capital city at Caiphul now submerged in the marine vegetation of the Sargasso Sea.

Strange as it may seem to those who do not realize that Truth is timeless, ever ready to be conveyed to a receptive mind, Atlantis could well pride itself upon its research and invention. It possessed airships lifted by levitation and propelled by a highly concentrated fuel. These airships were known as "vailxi" to that generation and were needle-like, aluminum spindles, capable of developing a speed of seventeen miles a minute. One of them now lies buried in a lava flow on the slopes of the Chinese Himalayas.

Radio and television were commonplace, having been developed far beyond our modern crude devices. Water generators condensed moisture directly from the air and made it available for drinking and irrigation purposes. Electricity was generated from solar and lunar energy and transmitted by wireless to the place of consumption. Caloriveyant instruments generated heat directly from the natural earth currents — the Night Side of Nature -- and utilized it for cooking and temperature regulation. These and similar mechanisms were produced in gigantic centers of industrial activity out of which were distributed to a world empire the products of the wizards of the laboratory. Although Lemuria built incomparable architectural works, such as the unfinished Cathedral at Baalbek, still it never stressed the mechanical aspect of its own

LEMURIA THE INCOMPARABLE

Civilization. That was left to the Atlanteans who exploited the research of the ancient Lemurian peoples and converted their knowledge into countless mechanical marvels, most of which have yet to be re-discovered.

Lest the reader feel that America, the Third Great Civilization, is unable to boast of any evidences of ancient Lemurian and Atlantean industrial ingenuity, let us mention only a few of outstanding importance. The greatest of all the prehistoric temples on the North American Continent, prior to the resurgence of the Mayan Empire, was the Monastery of the Sun Priests on the summit of the Grand Teton in northwestern Wyoming. Although now in ruins, it was used for many centuries, even after the passing of Lemuria and Atlantis, by the Indians of the Great Plains as a place for co-ordinating the various tribes into a single politico-religious cooperative association, composed of Kings and Priests (Chiefs and Medicine Men). This type of association suggests its Lemurian antecedent, the Order of Melchisedek, and sets the American precedent for the Kingdom of Christ, which is the Order of Melchisedek returned from the Motherland.

Canals and irrigation ditches of stone-lined construction, similar to those found in other portions of the world, are now being used in connection with the Boulder Dam power and drainage system in Southern California and Arizona. Government engineers frankly admitted that there was no means known in this age whereby they could be improved. When surveyed, it was impossible to gain one inch fall to the mile.

Vast cities of Lemurian construction once graced the awe-inspiring distances of its territorial protectorate. Beneath the sands of the Great American Desert lie the ruins of colossal urbanized centers, long since forgotten by modern humanity. In the backwoods of Kentucky and Tennessee, archeologists have found more evidences of a Civilization which was hoary with age before even the Red Man became established in this country.

What is today, has been before; what has been before, shall be again.

LEMURIA THE INCOMPARABLE

Thus, through many years of patient labor, bit by bit, and item by item, this priceless knowledge has been garnered, until today we have pieced together the history of the Lost Continent, the Lost Empire, and the Lost Race and can base our hypothesis of a New Continent, a New Empire, and a New Race upon definite and tangible records, in pictographs and hieroglyphics, as found in almost every corner of the globe. Here, in the Temples of Metalanim, Tiahuanaco, Cuzco, Uxmal, Palenque, Chichen Itza, Angkor Thom, Khara Khota, Babylon, Thebes, Heliopolis, Manoa, and the Grand Teton, a golden Race, with an almost superhuman knowledge of the Science of Being, has frozen its philosophy of life into blocks of stone and erected them as shrines to their God of the Sun — the *Solar Christ*.

If we are to be ignorant no longer of our heritage and destiny as a Found Race, we must return again in thought to the templed cities of our Lemurian and Atlantean ancestors and learn the story of the Lost Race and how it came to be royal. Once the Race which was lost finds the true source of its greatness, a spiritual renaissance will sweep the world and the Divine Order of Lemuria and Atlantis will touch the apex of its perfection in America. Until we understand from whence we came, why we are here, and to what destination we are bound, we can be a Christian Nation and Race in name only.

THE LOST RACE

UNDER the multi-colored Mogen David of the First Great Civilization lived twelve tribes or nationalities. These tribes composed the original Lemurian Citizenry whose Empire City of Hamukulia was located at the lower end of the Tama Valley before the entrance to the Hatamukulian River Gorge. Today this city is buried in the Upper Pacific near the Aleutian Islands.

These twelve tribes were under the jurisdiction of a thirteenth known as the Aristocracy of the Empire. The Aristocracy in turn was governed by a Grand Council of Mercurial and Venusian Masters who imparted to early humanity the basic principles un-

LEMURIA THE INCOMPARABLE

derlying the Mercurial-Venusian Divine Order. This Grand Council was then co-ordinated with the Angelic Hierarchy under the direct supervision of Terre, later denominated Jehovah. The interpenetration of human and angelic experience and ingenuity at that remote period enabled the Lemurian Race to operate a World Theocracy as though they themselves were totally responsible for its creation.

Citizenship under the Mercurial-Venusian system of civilization was not to be had by birth or naturalization. It was the logical outcome of an education designed to place each candidate in the most useful position possible commensurate with his abilities. To secure this education, certain institutions of divine learning known as Sacred Schools were developed in various localities on the Mukulian Motherland. These Sacred Schools offered a seven year course of instruction which, if successfully completed, enabled the student to receive an Initiation. At least one Initiation was required before a candidate was permitted to exercise the voting franchise as a Lemurian Citizen. Do not think that every Lemurian residing on the Motherland sought to enter these Sacred Schools. It was only the few ambitious ones here and there who, having caught the vision of man as a potential God in his own right, boldly assayed to reach the heights of Mercurial and Venusian Mastership. Some did reach Adept elevation; while others fell from the lower peaks and prostituted their divine knowledge for material gain. Had man never attempted to hew his own pathway independently of the great highways offered by his incomparable Teachers, the First Great Civilization might have been the Last. The reason why Jesus the Christ forecast the restoration of the Kingdom of the Gods (Acts 1:6-7) was to indicate that the Divine Order, although Lost to humanity at large, was in process of being Found by the same people who had interrupted its continuity. Thus, not one jot or tittle shall pass from the Law until all shall be fulfilled. (Matthew 5:18)

The curriculum of a Sacred School in that day was unlike that of our modern University. The principal subjects were Cosmic Law and Divine Statesmanship. Everything was made to pivot about these two considerations. Once the Law was learned, the student was taught how to apply it to governmental administration, musi-

LEMURIA THE INCOMPARABLE

cal composition, structural engineering, mathematical computation, agricultural production, social evolution, economic stabilization, industrial fabrication, and numerous other branches of human endeavor as organized by civilized society. Once the student learned the fundamentals of Divine Statesmanship, it was possible for him to see the complete picture of civilization in its multitudinous aspects and thereby to become familiar with all the Kingdoms of Nature and God from the mineral, plant, animal, and human to the angelic, archangelic, and celestial. Knowing all the problems, he became acquainted with all the solutions. A Citizen of Lemuria knew what life was about; he recognized his divine origin; and he acknowledged his divine goal. All he lacked in those early days was the ability to live as a God. That was to come later.

If the Citizen was of high caliber, exceedingly ambitious and considerably talented, he had the option of continuing his study an additional seven years. Successful completion of this phase of his education entitled him to the ranking of an Aristocrat. Although a Citizen was able to hold only an appointive office if he so desired, an Aristocrat was eligible for election. These elective offices were positions of great power and it was not unusual for a single Aristocrat to govern an entire Continent, as the great Mukulian Empire, at the height of its influence, was world embracing.

Although the early Citizens were innocent for the most part of wrong doing, they were far from virtuous. They had no need to cultivate virtue because evil had not yet become a factor in their development. However, when the element of temptation entered into their respective lives, they were required to cultivate virtue or lose their supremacy. They lost their supremacy.

With Paradise Lost, the twelve tribes migrated to different parts of the world from the submerging Motherland, later converging upon Atlantis as the gates of rebirth opened to them for their next attempt at building a Divine Order of civilization. Here, they were faced with the same problem of education as before, only now they did not have the benefit of the close association of the Hierarchy. Instead of twelve Sacred Schools as in Lemuria, they erected two institutions, one of which taught Science and State-

LEMURIA THE INCOMPARABLE

craft, the other Religion and Churchcraft. These were Schools of Initiation to which all Atlanteans had to go before Citizenship privileges were conferred.

Again the Lemurians, now reborn as Atlanteans, had the opportunity to prepare themselves for Citizenship by becoming either Churchmen or Statesmen, Theologians or Scientists, Priests or Kings. The Biblical Order of Melchisedek, known to the Lemurians exoterically as the Mukulian Empire of the Sun, was now referred to by the Atlanteans as the Incalian Empire of the Sun; and it was this Divine Order restated and reorganized which enabled man to rebuild the Lemurian Theocracy upon a more democratic basis. Seven years of training were required as before, but this time each student had the option to combine his study over a fourteen year period in order to become a Priest-King with free access professionally to either the Church or the State. In Lemuria, there was not this division between the Church and the State, as no separation was thought to exist in this regard.

The Atlantean Citizen was further along in his evolutionary progress than the Lemurian Citizen, but because he lacked the intimate contact with the Mercurial and Venusian Hierarchy, he was not as efficient in his manner of solving the fundamental problems of human relationships. The idea that man could live independently of God was an unthinkable concept at first, and it was not until differences of opinion developed between the Statesmen and the Churchmen that the practical and the ideal began to diverge. As soon as the Church and the State evolved a jurisdictional arrangement whereby each became separate entities entirely, the doom of Atlantis was sealed.

It was at this time that the twelve tribes, now known as the House of Israel, began their famous wandering in the wilderness. Coming into Egypt from Atlantis, they absorbed the proletarian government of the pagan Pharaohs and erected what is probably the greatest Lemurian monument of all time — the Great Pyramid of Gizeh. Built to commemorate the commencement of a programme for the development of the more perfect union between man and God, it stands as an imperishable testimony to the inevitable

LEMURIA THE INCOMPARABLE

restoration of the Divine Order by a New Race which has found its Divinity.

With the submergence of Atlantis, the Atlantean Citizenry became the Israelites of the Bible. These Israelites, of whom the Jews are but a small contingent, passed through many minor cycles and witnessed the rise and fall of many nations. Although their tribulations were many, they held intact the memory of their past greatness and ever sought to secure that leadership by means of which the Kingdom of the Mercurial and Venusian Gods could be restored to the world of men. It was not until the advent of Jesus the Christ that they were able to contemplate the standards of Citizenship as they will pertain under the New Order of Divine Expression.

The Israelites have often been termed the "Lost Tribes." These Lost Tribes are the Lost Citizenry of Lemuria and Atlantis. They will never find themselves until they are willing to accept Jesus the Christ as the Ideal Citizen of the Ideal Order. Had they been willing at that time to do just that as a race, there would have been no need to postpone the restoration or resurrection of the Kingdom. However, the Kingdom was still in a state of experimental development as far as the prospective Citizenry was concerned, and a New World or New Continent (the American) had to be colonized before the resurrection could take place. That Continent has been colonized; and the resurrection is now taking place on the shores of the Pacific (Salem), the Peaceful, in accordance with Pyramid and Biblical prophecy.

The migration of the Israelites across Europe is a matter of historical record. Their symbolical journey in the Ship of State — the Mayflower — is well known to all. The signing of the Declaration of Independence as a means of forwarding the experimental development of the Divine Order of democratic self-determination is but one of a series of thrilling events leading up to the proposed establishment of the Divine Order itself. The placement of the six-pointed insignia of the Mukulian Empire within the Jehovistic Glory Cloud, as seen on the obverse side of the Great Seal of the United States, is no unplanned coincidence. The words "Novus

LEMURIA THE INCOMPARABLE

Ordo Seclorum," meaning a "New Order of the Ages is born," cover not only this Age, but all Ages and imply that this "New Order" is entirely New in its establishment of Divinity in human expression. The uncapped pyramid with the all-seeing eye on the reverse side of the Great Seal offers additional evidence of the relationship which exists between our Forefathers and the early Israelites who built the Original Pyramid.

Conquest of the Great Plains, the lofty Rockies and the vast deserts of western North America, brought the Lost Tribes and the Lost Race to the edge of the Pacific Ocean — and upon land formerly a part of the continental expanse of the Mukulian Motherland. Here, where conditions are most propitious for a recovery of man's contact with the Mercurial and Venusian Hierarchy, a New Earth will be created by Exemplary Citizens of the Kingdom of the Christ. If you have some appreciation of the essential truth of this presentation and yearn to dwell on an Earth dedicated to these ends, you will want to prepare yourself as did the Lemurian and Atlantean Citizens of old for the high honor of creating a New World in association with the Great Masters.

So, having surveyed the past with its accomplishments, let us now survey the future with its possibilities.

THE NEW EARTH

THUS far, we have proved that humanity began its pilgrimage in this world from a now Lost Continent buried beneath the waters of the Pacific Ocean and have demonstrated the manner in which the various tribes or races of the Motherland have populated the globe as we now find it. From this hypothesis, we can conclude only that all peoples, regardless of nationality, are essentially members of one Root Race, which was Lemurian then, is Lemurian now, and always will be Lemurian. Read Jeremiah, Zechariah, and Micah for Biblical proof of this truth.

Having emanated from one Central Source, to that Source all humanity must eventually return. In this statement we recognize

LEMURIA THE INCOMPARABLE

the fundamental tenet of all religion, and although many interpretations can be placed upon it, the truth is inherent within the hypothesis. Contrary to the general belief that religion, to be religious, must be fanatically inspired, we can only reiterate that sheer logic conjoined with personal experience is the world's best academic teacher of the Science of Being.

Anything which squares with a mathematical or scientific concept is far more apt to be right than the person who disputes it.

There are few thinkers in this day and age who violently object to the possibility of the world's land masses being in a far different geographical position now, as compared with their location in a past cycle. Few will deny the historical accuracy of the Biblical Flood, while fewer still will contest the exhaustive geological research which has brought to light many astounding discoveries pertaining to the rise and fall of continents and oceans. Admittedly, such knowledge has not gained among the public the acceptance to which it is entitled, but like many inventions and philosophies which have run the gauntlet of public opinion, this, too, some day will become a part of the consciousness of the race as a whole, just as it was in ages past. Science acknowledges that virtually every portion of the earth's surface now above water was at one time submerged, as witness the evidence of sea shells and submarine vegetation preserved in rock formations, even as high as two miles above the surface of the ocean. And conversely, virtually every portion of the earth's surface now beneath the sea was at one time above water, as witness the many evidences of man's handiwork now known to be existent in the vast depths.

Since these are facts that cannot be successfully contested, sheer logic would seem to indicate that if the present earth is geographically different from the past earth, a future earth may well boast of an entirely new geographical allocation of continents, as compared with that with which we are now familiar. That this is a verity can be established readily by modern geological science.

The eastern seaboard of the North American continent is slowly submerging. Geologists have come to the conclusion that a now

LEMURIA THE INCOMPARABLE

submerged depression off Chesapeake Bay, discovered in 1935 and 1936, is the ancient valley of the Potomac River. It can be traced 126 miles eastward from the entrance to Chesapeake Bay where it still continues at a depth of 9000 feet. Other buried valleys on the edge of the coastal shelf were discovered by the Coast and Geodetic Survey at the same time between Chesapeake Bay and Cape Cod.

The Coast and Geodetic Survey has also discovered in the Atlantic Ocean near Nantucket Shoals several deep gorges, the largest being over 20 miles long and 3 miles wide. At the lower end it opens upon the ocean floor at a depth of 2000 feet. The British Admiralty has also reported that two islands in the South Atlantic — Thompson and Lindsay — have vanished. They had been on nautical charts since 1825.

As eastern North America subsides, western North America rises. The Grand Canyon of the Colorado is taken as a classic example of the effects of this separation. The north rim is now lower than the south rim; the depth of the cleavage is over one mile from top to bottom; and the fourteen mile gap will be seen to widen over the centuries. Although the division of the Continent may appear slow and therefore unreal, it is nevertheless sure. Only succeeding ages will prove the truth of the implications of our statements.

But outstanding as these instances are, there is one other even more portentous and that is the rapidly shifting floor of the Pacific Ocean. Islands have been known to have submerged in the South and West Pacific within the period of modern exploration, where the last vestiges of a once great Continent may still be found. The Japanese archipelago will subside by volcanic eruption and earthquake. These land movements will enable a continental mass to appear on the North American side of the Pacific contiguous to Southern and Lower California. From these points a New Earth will extend southwestward toward the Equator.

In 1933 several distinct submarine mountains were discovered off the coast of California by the U. S. Coast and Geodetic Survey.

LEMURIA THE INCOMPARABLE

The highest of these is known as "San Juan Seamount," 103 miles southwest of Santa Barbara. It is 10,188 feet from the ocean floor and only 2000 feet approximately beneath the surface of the ocean. These mountains form a sunken mountain chain whose highest peaks form the existing Channel Islands, San Clemente Island, and the Coronado Islands. This range will constitute the first land to appear when earthquakes lift the now submerged peaks above the surface of the water.

The U. S. Coast and Geodetic Survey has also reported the existence of numerous submarine canyons and valleys off the California coast, some of which are as much as two miles below sea level. Most of these are close to shore and exhibit all the characteristics of canyons and valleys above water. Geologists have long been puzzled over their formation, and many theories have been advanced to account for them. Only one explanation will fit all the circumstances of their existence and that is the declaration of their former position as part of a continental land mass. To lend additional weight to this conclusion, it will be noted that these canyons have tributary streams which have dissected the surrounding land in times past and contributed to the creation of a ruggedness of landscape found nowhere else but in the Southwestern States. That such lands were once above water can hardly be doubted with the facts at hand.

What is the significance of these several statements? Simply that a New Earth must eventually replace our present continents. The melting of the North Polar Ice Cap is perhaps the most noteworthy of comparatively recent developments in the formulation of this New Earth and deserving of brief mention. In 1893, the Norwegian explorer, Fridtjof Nansen, in his ship the Fram, discovered that the maximum ice thickness was 146 inches. In 1939, the Russian ice-breaker Sedov, in similar positions, encountered a maximum ice thickness of only 87 inches. Whereas, the lowest temperature recorded in 1893 was 52 degrees below zero, the lowest in 1939 was 44 degrees below zero. The University of Cambridge also verifies this trend from records gathered during an expedition in 1938 to Jan Mayen island off the eastern coast of Greenland. It is interesting to note also that coal deposits have been found in both

LEMURIA THE INCOMPARABLE

Greenland and Spitsbergen, indicating that the climate here was once semitropical.

The conclusions to be drawn from this evidence may at first stagger the imagination. First, more than one-third of the ice in the Arctic Ocean has melted in fifty years. Second, although no exact measurements are available at this writing relative to the rise in sea level, it is presumed to be rising. What will this mean to our present coastlines? To what extent will our existing continents be affected?

The battle fields of Europe will be known no more to the coming Race, as the greater portion of this Continent will be laid beneath the waves in Nature's own good time. The eastern coastline of the Pacific Continent — the Continent of Peace — will form where the lower Colorado River and the Gulf of Lower California make a natural boundary between the old and the new lands. Although some of California will be temporarily inundated by tidal waves, eventually continuous areas will be exposed between the present Pacific shore and the first range of rising mountains, and it will be from these first lands that the New Race will test its Adept powers in material construction.

When will this occur? Certainly not so rapidly as some misinformed theologians would have us believe. Nor will this final cataclysm take place at such a far future date that we do not have to consider our safety today. Not all who have eyes see. Spiritual blindness, like physical blindness, is due to lack of vision, and where there is no vision the people perish, not the laws which govern their welfare.

We do not ask you to accept these facts because we say so. That is entirely of your own election. But remember this: if the old order is tottering, if the old institutions, long considered so inseparable from the true Christian practice, are outliving their usefulness — and who can wonder as to their Christian character? — it must be obvious that those who persist in identifying themselves with this dying culture must inevitably perish by the same fate.

LEMURIA THE INCOMPARABLE

Do not minimize the need for making preparation for this bright future which opens to you possibilities of unlimited scope. You may think that you can escape the effects of your own thinking, but not so. If you think discordantly, you will take up the effects of the continental disintegration. If you think constructively, you will enjoy the colonization of peaceful lands newly baptized by the Water of Life.

To inherit a New Earth, you must prove your right to that inheritance. To prove this right, you must prove your ability to live in conformance with the ideals and principles actuating a New Order of the Ages which is destined to replace our present infantile culture. Having established the ultimate location of this supreme achievement, we are now in position to relate of the New Civilization itself. This will be the subject of our next section.

THE NEW ORDER

HERE are few living in our present age who can conscientiously deny that we are witnessing vast and tremendously important changes in the political, industrial, social, economic, religious, and cultural institutions of our time. The World Wars of the Twentieth Century are but accelerating these changes in the lives of those who would not otherwise go forward, having become too crystallized to accept the transition between Grand Cycles in any other way. That a New Age demands a New Citizen for a New Order must become apparent to all who wish to survive the final Armageddon and the collapse of the existing civilization.

When we speak of New Order, we do not have reference to any form of ideational civilization as is practiced on other continents and by other nations. To the New Race, New Order means Divine Order, and Divine Order means Divine Culture. No culture can be divine unless it upholds divine attributes and virtues. Since the highest virtue is pure and holy love, one for the other, it follows that any nation to be divine must be a loving nation. That no world power today upholds the love commandment as the law of its being is proof of the necessity for a change in both

LEMURIA THE INCOMPARABLE

continents and civilizations, for one without the other is valueless.

Because the American Continent was relatively unpopulated and unexploited before the advent of the white man, it provided a logical place for the commencement of a New Order. The standards of Citizenship for this New Order were determined by such outstanding spiritual leaders as George Washington, John Adams, Thomas Jefferson, James Madison, James Monroe, Benjamin Franklin, Thomas Paine, and others. These men declared their independence of the Old Order as any sincere person would do under the same circumstances. They won the War of the Revolution without winning a major battle, which is exactly what we would expect from true statesmen who seek to save life, rather than destroy it. They insisted upon defining and maintaining the rights of man so that future generations might reap the benefits of their vision. For their contributions to human progress, George Washington is now known as the greatest general of all time; John Adams as the man of destiny because he recognized the genius of Washington and Jefferson and changed the course of history by his transcendental knowledge of higher philosophy; and Thomas Jefferson as the most learned scribe of the age whose understanding of Cosmic Law and Divine Statesmanship has influenced the progress of man ever since he wrote the immortal Declaration of Independence for the Continental Congress. To men of this caliber the New Order was a Divine Order under Divine Supervision and the New Religion to do good to all men.

Came the "more perfect union" as prophesied by the Great Pyramid of Gizeh. It was not completely perfect, for perfection is relative, but it advanced the perfection of European civilization, even if the severance between the Old and the New Orders was not total. Democracy took hold. It captured the imagination of the New Race which emerged from the amalgamation of the various colonists. It grew into a "way of life," expanding into a new form of Christianity that gave meaning to the "worth of the individual." The Union prospered because its destiny called for a national exemplification of holiness and moral excellence. The Union was saved from destruction because its destiny remained unfulfilled.

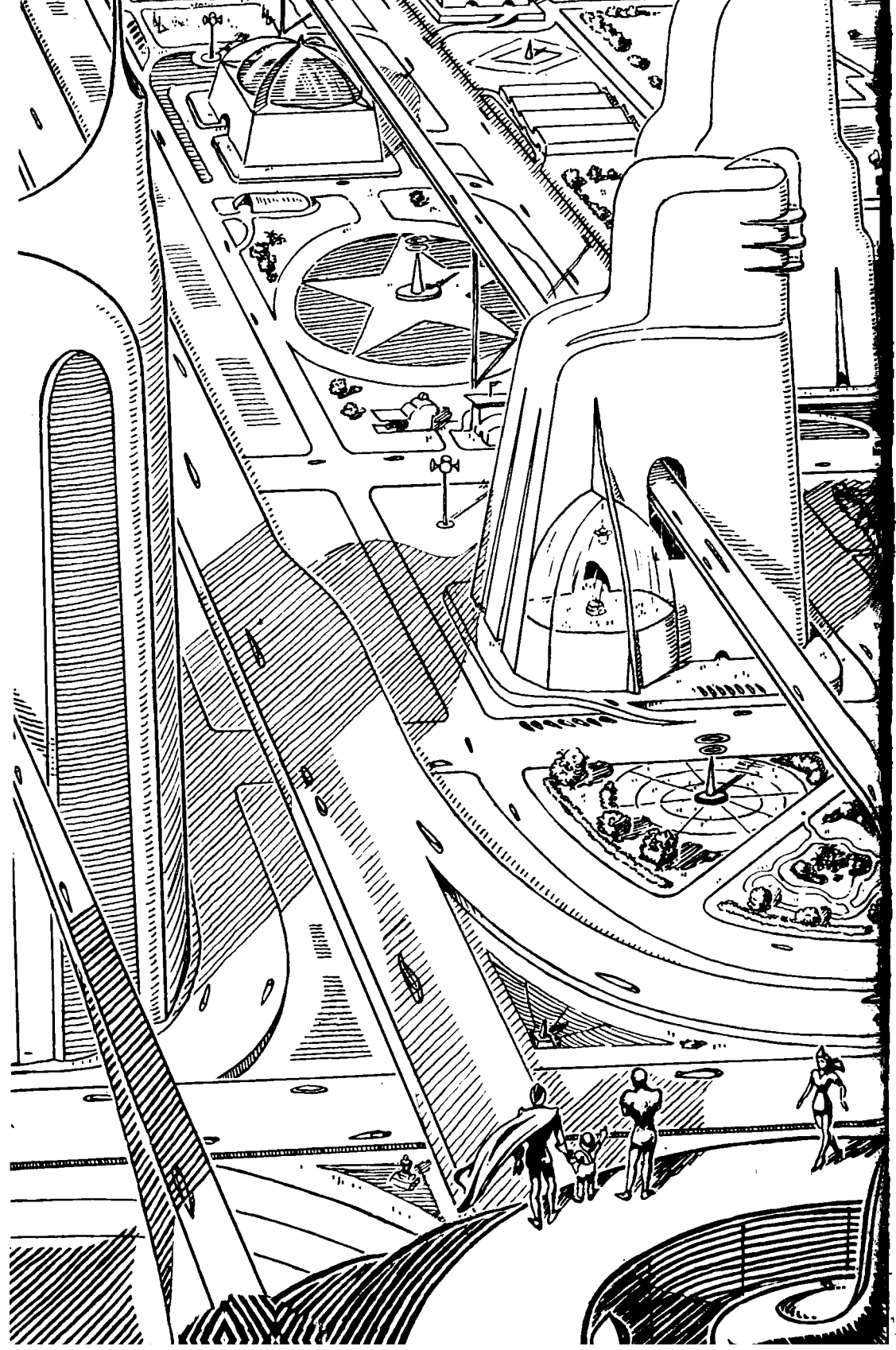
LEMURIA THE INCOMPARABLE

We need not recount a history of the nation's industrial development over the past several decades. The New Order of big scale machines is a matter of observation. But is this New Technological Order the last word in human progress? Having built these big scale machines, can it also be said that we have evolved big scale people in commensurate ratio? Of what value are expanded production facilities without expanded intellects to master them? Is production synonymous with enjoyment? If so, should we not be the happiest people in the world?

If a New Order is to mean anything at all it should mean a Happy Order. It should be wholesome spiritually, which is to say it should be organized for good. Therefore, if you feel that a civilization ought to be organized for the express purpose of fulfilling the evolutionary requirements of each citizen, this is your opportunity to assist in its formulation.

The Old Order — once New but now Lost -- is about to be Found. It is being found in the hearts and minds of all true disciples of the Christ who taught that the Kingdom is within the human personality. Look for it there, dear Reader, and you will find a New World self-created from those delightful dreams of the future earth you have always cherished.

What do the greatest seers of modern times see in the future for America? They see unlimited power generated by solar and lunar energy and transmitted by wireless to the place of consumption. They see gigantic cities with illuminated, fluted glass, quadruple-lane boulevards radiating from a central hub like the spokes of a mammoth wheel. They see an amazing architecture which permits buildings to be erected on quake-proof rubber blocks, insulated by air conditioning and illuminated by either indirect sunlight or incandescent, airless cylinder lamps of a construction yet to be formulated. They see fruits and flowers of a lusciousness and beauty now unknown to the outer world but which will be developed by secret processes for which they have the formulas. They see dyes which will cause fine gowns and robes to shimmer with an opalescent sheen, thus bringing back much of the glory of the Lemurian Royalty. They see mammoth govern-



LEMURIA THE INCOMPARABLE

mental edifices of aluminum and glass, extending with their beautiful arcades and patios as far as fifty acres, which, if erected under our present economic standards, would cost three times as much as Boulder Dam. Not only are the inventions, formulas, architecture, and culture of the New Order known to that great body of Perfected Beings who compose the Lemurian Invisible Brotherhood, and whose Sacred School is the foundation of the New Civilization, but also the location of the cities, the type of cooperative government which will rule these colossal, urbanized centers, and the cost of the programme in self-sacrifice and self-denial.

Do these seers see more than technological advancement? They do. Do they see more than a guaranteed standard of living, more than an assured security of person, family, nation, and race? They do. Do they see more than the solved problems of our existing system of civilization? They do. What do they see? *They see the inevitability of happiness when all people think good, are good, and perform good, without restraint, and for no other reason than to bring happiness to others.* Once this attitude is cultivated as a working principle by the New Race humanity, the New Order will bless humanity with its compassion. This is our aspiration; this, our pre-destined accomplishment.

If you are sincerely interested in knowing how you may affiliate with this New Order of Human Happiness which is based upon virtue and not upon force, you will want to read the concluding portions of this booklet with unusual care. Once you make your decision, for or against, you will determine your future for some time to come.

THE NEW RACE

CONCEIVE an ideal race, or society, composed exclusively of individuals, all actuated by the same identical principles which obtained in the days of the Original Empire and which will continue to govern the Cosmos for all time to come.

Conceive an ideal state, or nation, composed of Citizen-Initiates, all trained in the proper use of every Cosmic Law, just as were

LEMURIA THE INCOMPARABLE

the ancient Citizenry so long ago when they came to the Great Temples of Learning on the Lost Continent to receive their instruction in the Mysteries.

Imagine the illimitable power of a universal race consciousness elevated to such a standard of perfection.

Would you choose, if you could, Citizenship in this Divine Order of Christian Civilization where service is the cornerstone of all government, and life, liberty, and the pursuit of happiness, the Supreme Law of the Land?

Today, for the first time in the history of our present American Cycle of world affairs, seventy-six millenniums of human experience await release by the Lemurian-Atlantean-American Theo-Christic Masters for the development and preservation of a New Universal Race which is the very incarnation of the Lemurian and Atlantean Citizenry of old. The basic principles underlying the Arcane Wisdom, as understood by both the Lemurian and Atlantean peoples of that day, have been drawn from the very depths of human thinking, as we have already so painstakingly proved, even from a civilization so old that most of humanity has forgotten it ever existed. Piece by piece, section by section, each separate unit has been slowly fitted into its proper position, like the component parts of a truly gigantic jig-saw puzzle.

Far antedating the construction of the Great Pyramid in Egypt, this process has been going on, and slowly, throughout the ensuing ages, a Master Philosophy has been materializing gradually in the hearts and minds of men — awaiting the day of liberation when it could precipitate itself into physical expression. *This day has come.*

Obviously, it is impossible to present adequately even a few of the many evidences of the presence of the New Race, much less give any comprehensive idea of the New Lemurian Philosophy of Life which is today motivating the actions of the new generation. However, a few illustrations should persuade even the most skeptical that there is a definable something active in the modern world,

LEMURIA THE INCOMPARABLE

a something decidedly not in evidence several decades ago. This something is none other than this same resurgence of Lemurian and Atlantean culture, previously mentioned, which is being prompted by certain Lemurian Masters whose mighty occult powers are moulding the environmental conditions of the New Race.

The chief physical characteristic of the younger generation is embodied in their increasing delicacy of facial features, conjoined with a lessened ability to withstand physical hardships. The ascendancy of the machine in our daily life is not the cause of this change in the basic metabolism of the average American, but rather is the result of the inability of these advanced souls to endure a more rigorous, sensate life. Simple observation will prove that the aesthetic tendencies of the new American do not imply weakness, but that, having shed much of the physical coarseness of his pioneering ancestors, he is beginning to devote himself exclusively to such cultural pursuits as will elevate his Race to its rightful position in the New Cycle now impending.

Intellectually, the younger generation has so far outstripped the older that the difference in learning almost staggers the imagination. Today, it is a commonplace to hear children, as early as four years of age, speak of Atlantis and Lemuria as established facts. It even is no longer remarkable to learn of children who can see into etheric planes, nor do we even raise our eyebrows in skeptical surprise when some child suddenly leaves the room to play with an elf or a gnome. Many reading these lines may have had experience with some child who thinks nothing of relating incidents of past incarnations, having retained the memory of prior lives, former parents, and a previously acquired education.

Naturally, a Race of such advanced souls demands a deeper and more soul-satisfying philosophy of life than can be supplied by the old institutions, fine as they are for the people they serve. It demands a New Code of Ethics and Morals more suited to its higher position on the evolutionary spiral. It demands concrete explanations of this physical transition called death, the post mortem existences, the whys and wherefores of reincarnation, the

LEMURIA THE INCOMPARABLE

science of karmic atonement, and a thousand other religious concepts, heretofore acceptable only upon blind belief. It demands specific citations of the truth of such concepts, not because it wishes to be argumentative, but because it has dedicated its life to the overcoming of error. In short, it demands a practical Christianity which can be applied with such scientific precision as to enable each one to live smartly, correctly, assuredly.

If one were to say that the New Race requires a New Religion, one would be right, but wrong also. Religion is indicative of the arts and practices of life by which man recognizes his relationship with his God. That this relationship is the same now as it was in past cycles is self-evident, for truth is timeless. People differ as to interpretations of the One Truth, but that Truth as Truth is beyond the scope of personal opinion, is obviously indisputable. God is, and whether we love, fear, despise, or ignore Him, *He still is*. Shall we not study Him as He is, rather than to continue stressing our own personally preconceived and erroneous notions of His Being?

Several years ago, it was considered a heresy for people even to breathe a belief in the science of karma and reincarnation — the twin pillars of esoteric Christianity — yet today, even in the Sunday Schools of our most orthodox churches, children speak of these truths as being beyond the nature of controversy. Yes, these are startling facts, but facts none-the-less. *Were it not for these daring pioneering souls coming into incarnation at this time and bringing with them a knowledge of their past achievements, a New Order of the Ages would be a total impossibility.*

Study the unconscious actions of the younger generation, even while still in grade school, if you would know the secret of their greatness. Watch how avidly they read of Lemuria and Atlantis. See how they construct scrap books of tremendous historical import. Note how they build radios, steam engines, motors, model airplanes, and similar mechanisms. Observe their selective diet, their love of nature, their unquenchable enthusiasm, their intense industry, their brilliant intellects, their masterful leadership. Witness the child prodigies in the motion picture industry alone.

LEMURIA THE INCOMPARABLE

Never in the history of the world have you ever seen more geniuses under thirty-five in public office and at the head of private corporations than at the present time. The youth of our modern high school and university instructors is beyond all precedent.

What is the source of this greatness? Whence comes the experience to exercise such talent? Who are these children that they can do in one year what the older generations could not do in one century? Why is it that one child can hum the Lullaby of Brahms at eight months when another cannot do so at eight years, or even at eighty years? Does it not seem logical to believe that this experience has its origin in their own past efforts to achieve mastery of some particular proficiency? And does it not also seem reasonable to believe that these children in exercising that proficiency must necessarily embrace a superior civilization as a vehicle for rendering superior service with superior talent?

Is it a coincidence that a New Race should be born at this time for a New Order? Not so. Chance is a finite term invented by minds that cannot think. As a rational inquirer into the science of idealistic living, you cannot believe that "things just happen." They must be ordered.

Chance did not direct this booklet into your hands. You asked for it, consciously or unconsciously. Therefore, whether you act upon this wisdom, or discard it as visionary and worthless, do not confuse chance with destiny. You may "chance" to become a Citizen of the New Race and Order, but your destiny predetermined the final result while you were an earth dweller on other continents.

Open thine eyes and thine ears.

THE LEMURIAN FELLOWSHIP

SO THAT the former Lemurian and Atlantean Citizens who are to compose the New Race might have the opportunity of regaining their Citizenship privileges within a New Divine Order of

LEMURIA THE INCOMPARABLE

Civilization, it was necessary for the all embracing Lemurian Theocratic Sacred School to supply once again such teachers as had previously taught these ancient people. These teachers were brought together from different parts of the United States to form the LEMURIAN FELLOWSHIP whose curriculum covers the general knowledge essential for participation as a New Race Citizen. The two men responsible for its inauguration and administration are Robert D. Stelle, world traveler and explorer and onetime an executive of La Salle Extension University, and Howard John Zitko, nationally known lecturer, writer and educator, now minister of the Temple of the Jewelled Cross at Los Angeles, California.

The Great Work of enrolling the New Race and laying the foundations for the New Civilization began on September 16, 1936, as foretold thousands of years previously in the Great Pyramid of Gizeh. On this date the world entered into the King's Chamber of this mighty edifice, figuratively speaking, there to find an empty coffin, symbolizing the resurrection of the King who is to lead the New Race into the fullest expression of its divine powers. Since this time, some phase of this New Order has become a national policy with every major nation on the globe, although the Christed aspect of the coming world civilization must needs start with a handful of advanced souls who have caught the vision of what it means to live as Jesus the Christ — the one immortal exemplary Citizen of the final Universal Commonwealth.

From September 16, 1936, when the first beginnings were made in the City of Chicago, Illinois, until June 9, 1942, when the LEMURIAN FELLOWSHIP was incorporated as a California non-profit, non-stock corporation, there was a period of experimental development which paralleled the establishment of the early American colonies prior to their co-ordination as a constitutional body. In December of 1936, the Midwestern Office was moved to Milwaukee, Wisconsin, where it remained in active operation until April 17, 1942. On August 20, 1938, a second Division was created, the Pacific Coast Office, and this was established at Chula Vista, California, in accordance with the esoteric timetable revealed by the Lemurian translation of the Great Pyramid. This Office remained at Chula Vista for nearly three years before

LEMURIA THE INCOMPARABLE

being moved to the Gateway Estate at Ramona, California. Prior to the closing of the Midwestern Office, another Division was created at Los Angeles, California, and from this grew the Temple of the Jewelled Cross which is now the focal point of the co-operative movement known as the United Tetons of Lemuria. Hence, at the time of the incorporation of the LEMURIAN FELLOWSHIP, three Divisions were in active operation — the Educational Division at Ramona and the Industrial and Statistical Divisions at Los Angeles.

The LEMURIAN FELLOWSHIP is an institution of religious instruction whose vocational application of the truths being studied entitles it to operate lands for agricultural and industrial purposes, to house its duly qualified and accepted membership permanently on property belonging to the Corporation, and to do all those things which are necessary and proper in the precipitation of its educational program as a "way of life," the same to embrace the creation of an exemplary civilization in harmony with the highest ideals of American society. The LEMURIAN FELLOWSHIP, therefore, is more than a school, more than a church, more than a co-operative movement for social and vocational expression. It is a Preparatory School of Initiation, and as such teaches the high standards of physical, emotional, intellectual, and moral conduct which must be met before New Race Citizenship will be conferred by the Masters who guide the institution.

These standards are high, higher than anything previously propounded. Nevertheless, they are possible of realization. Unless you, as a candidate for such Citizenship, eventually adhere to standards beyond your present capacity to sustain, you cannot go forward. Thus, if you were to bring into the New Order the insufficient standards of the Old Order, then the New Order would sustain the same imperfections as the Old and be equally as unsatisfactory. For this reason, the purposes of the LEMURIAN FELLOWSHIP as a Preparatory School of Initiation are fulfilled when you have been able to shift your standards from the Old Culture to the New.

All efforts of a similar nature, involving the formation of a New

LEMURIA THE INCOMPARABLE

Race and Order, have failed in the past because people were permitted to become members of such societies *before they were prepared*. This is not the case with the LEMURIAN FELLOWSHIP where any student may study without joining any society. By becoming a student of the LEMURIAN FELLOWSHIP, you do not "join" the FELLOWSHIP, any more than a candidate for Initiation becomes an Initiate by merely making an effort in that direction. You may become a member of the United Tetons of Lemuria or the Temple of the Jewelled Cross, however, by agreeing to meet the high standards of conduct required of all participants in such co-operative endeavor. Such membership is optional and has no bearing upon your Citizenship which is determined by the Masters of the Great School Themselves.

The standards of Citizenship in the New Order have been revealed through the LEMURIAN FELLOWSHIP'S master work — the LEMURIAN COSMO-CONCEPTION. This is gradually being recognized as one of the greatest literary efforts ever struck off by the hand of man. It is divided into twelve lessons or volumes of 35,000 to 40,000 words each and covers every subject that has any bearing upon human mastery. By studying this instruction, you will have a complete blue print of the kind of world you will inherit if you will live in conformance with these standards.

The FELLOWSHIP has no authority to release the Cosmo-Conception in book form, but has prepared the material in such a manner that those unfitted to receive it cannot come into possession of information which they may be tempted to misuse. Thus, to give any comprehensive outline of the actual contents of the instruction, by undertaking to mention all the many subjects it covers, would require many pages. Merely to list those subjects would convey no adequate idea of their range and importance. Still, we want you to have some idea as to the truly marvelous fields of new opportunity for advancement they afford.

The Cosmo-Conception is divided into four sections of three lessons each. Each of these three lessons is entitled with the name of a Cosmic Law which relates to a particular aspect of the New Civilization. The sections themselves cover such broad subjects

LEMURIA THE INCOMPARABLE

as Economics, Defense, History, and Religion, while the entire instruction teaches every phase of the personal development of man, together with the manner in which he must merge himself into the Kingdom of the Christ as a New Race Citizen.

The Cosmic Laws of Precipitation, Compensation, and Correspondence are treated exhaustively in the first section of the study. How to precipitate thought into physical substance is only one of the many secrets revealed in the first lesson. How to build an invulnerable karmic security by solving your financial problem permanently is the principal theme of the entire section. Hundreds of subjects well known to all students of metaphysical philosophy are expounded herein from a thoroughly unique viewpoint. Even though you may feel that you have studied all this before, you have not been told so far about the manner in which knowledge is to be applied. The Lemurian Cosmo-Conception will indicate in clear and concise terms how you can apply this knowledge in a New Age environment upon lands which await the advent of the New Race Citizenry.

The Cosmic Laws of Transmutation, Initiation, and Collaboration are discussed in the second series of lessons. The perfection of the body is the keynote of the fourth lesson; the perfection of the soul, the keynote of the fifth; the perfection of the spirit, the keynote of the sixth. Among some of the subjects elucidated in these three lessons are the Mental Body, the Astral Body, the Etheric Body, the Physical Body, Universal Mind, the Diamond Marriage, the Virgin Marriage, the Master Marriage, the Twelve Virtues, and Lemurian Theo-Christic Initiation. The Divine Wisdom contained in these chapters has been communicated from supermundane sources which are unimpeachable. These lessons are the last word in educational technique. You, too, will agree when you have read them.

The Cosmic Laws of Administration, Equation, and Translation are offered for study in the third series of lessons. An esoteric history of Lemuria, Atlantis, Egypt, India, and America is traced in Lesson Seven, and upon the implications of this historical sequence is builded the Christian conception of the New Order of the Ages.

LEMURIA THE INCOMPARABLE

Up to this time no adequate history of man sufficiently broad to cover man's prehistoric past on now submerged continents has ever been written. An esoteric history of the Lemurian Tabernacle in the Wilderness, the Incalithlon of Atlantis, the Temple of Isis, the Temple of Solomon, and the Cathedral of Ezekiel is considered in Lesson Eight. Here will be found the story of the Ark of the Covenant, covering three Grand Cycles of human endeavor, and affecting the evolution of the peoples on five continents from Lemuria to America. A thought provoking prophecy of the future New World Cities is the principal topic of Lesson Nine. New Age Industry, New Age Education, and New Age Government will set forth the kind of living conditions which will obtain in the New Race Commonwealth. Having read these lessons you will have a much better comprehension of your past accomplishments, your present work, and your future inheritance.

The Cosmic Laws of Causation, Reincarnation, and Regeneration complete your study of the Cosmo-Conception. This last series is a fitting climax to this one authentic Preparation for New Race Citizenship. It is primarily a treatise on religion, and yet one that omits any discussion of theology as a basis for religion. Lesson Ten elucidates the Lemurian Position, the Atlantean Position, the Indian-Mayan-Egyptian Position, and the American Theo-Christic Position. Lesson Eleven answers the riddle of Physical Birth, Physical Life, Physical Death, Etheric Transition, Astral Transition, Mental Transition, and the Egoic State. Lesson Twelve outlines the religious life of the Lemurian Race, the Atlantean Race, the Aryan Race, and the Universal Race. This entire series is one of linking together the aspirations of the world's peoples, of tracing their history from the cradle to the grave and through the grave back to the cradle, singly and collectively, and of resolving the karma of the world into the simple operation of the Law of Action and Reaction. This is a discussion you cannot afford to miss, for your security depends upon your understanding of the forces which are at work about you. If you are looking forward to an Era of Peace and are willing to do your part toward that end, the world needs you. Protect yourself for that purpose.

This is an intensely practical program. The New Universal Race

LEMURIA THE INCOMPARABLE

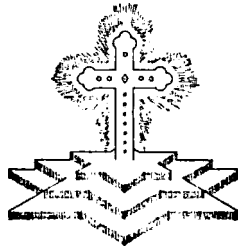
and its exemplary civilization which is the Kingdom of the Christ in modern form, is not an Utopian dream to be indulged in by impractical people. It is a concrete and workable formula of Christian living as witnessed by all those who are even now taking part in its formulation. This New Race is composed of engineers, architects, educators, statesmen, and scores of other types of professional people who are working in the one and only great humanitarian project which offers any hope to a demoralized world. Unless a few people can live virtuous lives within a society organized for Cosmic purposes and so prove to the world that Christianity is workable once it is tried, how is it possible to educate those without virtue to strive for Christian mastery? The creation of an exemplary civilization is the only solution to the world crisis. Accept it as such, and you will soon be fulfilling your rightful place as an exemplary citizen thereof.

The Lemurian Cosmo-Conception, which reveals the nature of this New Civilization and its Citizenship requirements, is the composite product of many minds. For this reason, its authorship is considered unimportant. It has been recorded and translated by one known as the Lemurian Scribe, the latter being the title of an office rather than of a personality. It is a Preparation for Citizenship, as previously described, and will eventually lead into a seven year residence schooling on Estate property in accordance with Lemurian and Atlantean precedents.

Never before in the history of the world has the Lemurian Theocratic Sacred School created a channel of expression, such as the LEMURIAN FELLOWSHIP, whereby its teachings could be released on a correspondence school basis. However, due to the distances involved and the economic organization of the Western World, it was not possible when the work was started to build a residence school immediately which would enable anyone to attend and without monetary tuition. Consequently, the lessons have been prepared in loose leaf form for home study, bound in a leatherette finish green cover and bearing the name and number of the person to whom they are issued. The tuition is nominal and covers only the costs of administration; the knowledge is beyond price and constitutes a gift from the Masters.

LEMURIA THE INCOMPARABLE

The LEMURIAN FELLOWSHIP is the legal sponsor of the Lemurian Programme for a New Race and Order. It has sponsored this Programme continuously for seven years and prior to 1942 had active students in many foreign countries. The consolidation of its gains in Southern California has been remarkable and the migration of the remnants of the Lost Citizenry has proceeded with such precision as to leave no doubt as to the ultimate result. For information pertaining to this Programme read the next section.



LEMURIA THE INCOMPARABLE

THE LEMURIAN PROGRAMME



IT can be seen readily from the foregoing that the Lemurian Programme has already covered some 76,000 years of human history. It commenced with the building of the first city on the Mukulian Motherland, Biblically entitled the City of Enoch, and will end with the construction of the last city on the restored Motherland, Biblically designated as the New Jerusalem. The present day aspect of this Programme commenced with the advent of Jesus the Christ who ex-

emplified the type of Citizen capable of inheriting a New Earth and will end when the nucleus of this New Christed Race of human beings is prepared to colonize lands which will have risen in the Pacific off Southern and Lower California. Thus, we can consider the Plan in the long run from Lemuria to Lemuria, or in the short run from Christ in personal form to Christ in racial manifestation.

However, it is also possible to look at the Lemurian Programme in the very short run, that is, over a period of perhaps several generations. This may help to indicate the immediate developments which have taken place and those which are yet to occur in our own time.

In the Spring of 1941, the LEMURIAN FELLOWSHIP purchased the first of the Lemurian Estates at Ramona, California. Formerly a "dude ranch," this tract of land comprising 164 acres at one end of the Santa Maria Valley, was titled "The Gateway" because it symbolized the means by which the New Race will enter the Kingdom of the Christ.

Since statistical information in a booklet of this kind can never



Entrance to Gateway Estate

LEMURIA THE INCOMPARABLE

be current, the reader is referred to the *Lemurian Ambassador* for information regarding all property owned by the New Race and the LEMURIAN FELLOWSHIP. As advanced students are ready to participate in New Age vocational enterprise, they are invited to live on Estate land and to work co-operatively for the extension of the New Race ideals. These invitations are extended as rapidly as housing facilities are made available.

The co-operative association responsible for the development of the land is known as the United Tetons of Lemuria, or the Temple of the Jewelled Cross. The latter is the official designation which now covers the entire co-operative activity of the student membership on a national scale. Affiliation with this institution is optional with the student of the Lemurian Cosmo-Conception, but mandatory if such student desires to meet the exacting standards for residence on Estate property. Students are eligible to file applications for membership at any time after their acceptance by the School, although some study is imperative before the full significance of such membership can become known.

A self-sufficiency program has been in existence for some time, covering the New Race creation until the end of the Century. Among the many matters which might be mentioned, either under consideration or in process of integration, the following are the most important: housing development, the same to include dormitories, bungalow units, community houses, laboratories, manufacturing, stores, schools, theaters, and temples; agricultural development, the purpose of which is to create gardens, orchards and vineyards, together with the promotion of adequate irrigation facilities, food preservation procedures, and the purchase of needed farm equipment; textile development, this to take into consideration the acquisition of looms, spinning and carding equipment, sewing machines and cleaning, dyeing, and pressing apparatus, as well as the establishment of a source of supply on Estate land of cotton, flax, ramie, and other plants for weaving fibers; economic development whereby Cosmic Law will become the basis for a reciprocal exchange of goods and services on a Christian basis; social development whereby each Estate worker may realize perfection of body, brilliance of mind, and nobility of char-

LEMURIA THE INCOMPARABLE

acter as requisite qualifications for Lemurian Citizenship; governmental development whereby all law will be Cosmic in derivation and self-executive in operation; educational development whereby all children of New Race parents will be taught from birth the unfoldment of their adept powers; industrial development whereby the New Race will create in time a standard of living second to none; cultural development whereby music, art, literature, sculpture, painting, and dramatics will contribute their respective parts to the precipitation of a Divine Order; transportation development so that the exchange of products between the New Race and the existing civilization may be facilitated and encouraged for mutual convenience and good will; and last but not least, land development which will enable the Estates to be expanded as increasing numbers of New Age Citizens dedicate themselves to this end. Such is but the condensation of a plan that is now being furthered for the benefit of all those who are sincere in their desire to be part of this Great Work at some time in the future.

The current Lemurian Programme also includes the development of the Temple of the Jewelled Cross at Los Angeles, California. This Temple is the center of influence for the co-operative association of the United Tetons of Lemuria, as it is from this point that the administrative activities are undertaken. Under a specially devised Congressional Assembly, composed of twelve separate legislative departments, the various members of the Temple of the Jewelled Cross meet regularly to promote the cause of the New Race.

In addition to this one all-inclusive activity, the Temple of the Jewelled Cross enacts rituals and ceremonials, teaches religious instruction, offers vocational guidance, and sheds its karmic protection over all. It is from the Los Angeles membership of the Temple of the Jewelled Cross that most of the Estate workers are selected. Being dedicated to the exemplification of the twelve virtues of the Christ, the Temple is the ideal place for determining the extent to which these virtues have been accepted by the individual members.

In addition to sponsoring the Temple of the Jewelled Cross and

LEMURIA THE INCOMPARABLE

the Ramona lands, the LEMURIAN FELLOWSHIP publishes the *Lemurian Ambassador*, a New Age newspaper now printed bi-monthly and conceived as a medium for publicizing the New Race activity. It also publishes books of unusual worth, such as "An Earth Dweller's Return" by Phylos, Kemistrus, Zonas, Holtah, and Mol Lang—Lemurian Theo-Christic Adepts. A number of minor arts and crafts are promoted from time to time independently of work done on the land. Some of these are, or have been, food dehydration, soap manufacture, weaving, and various talismanic creations. Due to the current crisis, this activity must necessarily be in a state of extreme flux.

As the children of New Race parents increase in learning through their association with the Temple of the Jewelled Cross, they will naturally demand more facilities for the expression of their creative abilities, much more than those previously considered adequate by their parents. This means that the parents of these Lemurian children must provide such facilities in advance of their actual use. To do this, we must extend the Lemurian Programme into succeeding generations.

An entirely new educational curriculum will need to be devised to take every child from the cradle to maturity. Thus, at the age of twenty-one, each child must voluntarily enter upon seven years of disciplinary training in a New Race University, successful graduation from which will entitle the candidate to Citizenship. Virtually 28 years of schooling in higher philosophy will be mandatory for all New Race children who desire membership in the Kingdom of the Christ.

The New Race children will also demand the very best machinery for industrial purposes, the very best economic system for adequate defense, the very best type of government for the efficient conduct of all human enterprise, and the very best bodies through which to express their transcendental experience. These children will have the right to insist upon a decent birth, and a good, clean life, free of stringency and dishonor, without discord or conflict. Surely, if we did not think much of our own opportunities, we ought to think of how we can contribute to theirs.

LEMURIA THE INCOMPARABLE

Admittedly, we have chosen a stupendous task. We are not only asked to insure our own preservation—and that is difficult enough in these times—but we are also asked to insure the preservation of our children. *Can we do it?*

If you believe you can do it, you are indeed among the chosen. The world's collapse is your opportunity to prove your stability. Sound the call for these New Age children to arise from their graves in the fulness of their resurrection. *It can be done.* And when these children grow up in the magnificence of their ascension, they will find a world in which you, too, would have been proud to be born.

Therefore, we say to these children, "Arise from your graves! Stand forth in your holiness! Unfurl your banners! Conquer with the power of your love! Yours is the green light of unending progress."

THE LEMURIAN CITIZENRY

HAVING traced the manner in which the Race became Lost in Lemurian times and how it came to be Found in this present Twentieth Century as a Universal Citizenry of a Universal Commonwealth, we can realize readily that the very people who composed the original Tribes of Israel, of which Judah is but one of the twelve, will again comprise a civic body of reincarnated souls whose experience will enable the world to rehabilitate itself after the Battle of Armageddon. This hypothesis has been demonstrated in every portion of this booklet and need not be further amplified.

For this reason, by registering with the LEMURIAN FELLOWSHIP as a candidate for Lemurian Citizenship, you are in reality enrolling in a Preparatory School of Initiation, whose curriculum is designed exclusively to create Citizen-Initiates of a New Social Order. By Lemurian Citizenship we mean membership in a New Civilization dedicated to the triune Lemurian ideal of the Fatherhood of God, the Motherhood of Nature, and the Brotherhood of

LEMURIA THE INCOMPARABLE

Man. Therefore, by studying in the LEMURIAN FELLOWSHIP you secure more than the usual type of occult instruction. You are told how to apply it as though you were already living within the New Race and Order.

The LEMURIAN FELLOWSHIP builds Citizens after the pattern of Jesus the Christ. These Citizens must be capable of withstanding every test of ethics and morality. They must possess that intuitional vision which will enable them to cover the entire scope of human history from Ancient Lemuria to a New Earth. They must make such contact with the Inner Planes as will endow them with the ability to undertake the work for which they incarnated by means of interior direction. They must conscientiously perfect their physical bodies, sensitize their emotions, intensify their intellects, and spiritualize their characters. And above all else, they must cultivate from day to day, the twelve virtues of the Christed personality—sincerity, charity, forbearance, tolerance, patience, kindness, devotion, efficiency, precision, courage, discrimination, and humility—these twelve, for they are the concomitants of Sainthood and Mastership.

The Lemurian Citizenry is the advanced element of our present race. Not all Lemurian students reach the point of Citizenship, of course. But each one has the opportunity if he will but apply himself. Confirmation of Citizenship comes from the Masters and not from any mundane source. Consequently, when you enter the FELLOWSHIP, you immediately become identified to a degree with Their plans and purposes. By Them, you are helped in the building of your own Christly virtues, and by Them you are tested in your demonstration of these attributes. Once these virtues are your attainment, you are master in every sense of the word.

Such is the opportunity we offer: that by your acceptance of your responsibility in building a better humanity for a better world, we are able to instruct you in the solution of every problem personal to you. This may seem at first too good to be true, but we appreciate from our own experience that when people once forget their own pettiness and selfishness by thinking in terms

LEMURIA THE INCOMPARABLE

of group objectives, personal problems vanish. Hence, once you undertake to merge yourself into a Brotherhood for the purpose of furthering selfless ends, selfishness ceases, and with selfishness gone, happiness is the result.

This is our challenge—that you put aside all thoughts of “What is there in this for me?” and say with St. Paul, “Lord what wilt thou have me to do?” (Acts 9:6) The LEMURIAN FELLOWSHIP is a channel of service, not of aggrandizement. It operates not for profit, but for love. It needs you if your mind is clean and your heart right. You need it, once you realize that it will guide you into a New Earth and prepare you for a New Life.

Is this ideal of a better world too exalted to be worth striving for? Is it too much to ask that you better your position in life by helping others to better theirs? Will you not make some attempt now to bring in the Kingdom of the Christ and so enable the world to recover its sense of direction and thereby its sense of usefulness? The world needs an exemplary pattern by which to determine the perfection of its future accomplishments. This New Race and its Divine Order can furnish that pattern. Will you do Your part?

May the decision you make within the sanctuary of your own heart be one which will reflect the insatiable longing of the true aspirant to be of monumental service to the human race.

BENEFITS AND COST

OBVIOUSLY, it is hardly possible to list all of the benefits of your association with the LEMURIAN FELLOWSHIP. These benefits will accrue in proportion to your ability to recognize them. By enrolling in this Preparatory School of Initiation, you are not joining an organization which requires of you any particular allegiance outside of a conscientious study of the Lemurian Cosmo-Conception. Therefore, you may apply for registration without feeling that any demands will be made upon your time other than your study of the instruction, such study to be a volitional matter entirely.

LEMURIA THE INCOMPARABLE

The time it takes you to complete the Twelve Lessons of the Lemurian Cosmo-Conception is a personal affair. The instruction may require any where from two to seven years, depending upon your sincerity, previous study, and intuitional perception. However, you may dwell as a probationary Citizen on Lemurian lands before completing the lessons, providing you are willing to comply with the provisions of membership in the Temple of the Jewelled Cross, which is the Esoteric Section of the LEMURIAN FELLOWSHIP. Since the Lemurian Programme covers so vast an amplitude of time, even seven years is not too long a time to be spent in conscientious training for a Citizenship standing which will last many generations. The important point is to start now so that seven years hence you will have become a highly desirable component of the New Race humanity and fully equipped to build the New Civilization in an intelligent and moral manner.

Your association with the LEMURIAN FELLOWSHIP will enable you to commune and correspond with the personnel and other students of the institution for an exchange of ideas and services. It will bring you a social security that cannot be gained from books alone. It will build within you a spirit of fellowship beyond monetary evaluation. It will keep your mind alert, your hands busy, your heart willing, your eyes on the stars, and your feet on the ground. In short it will liberate you from all your present distresses, uncertainties, and inadequacies and place you firmly on the pathway leading unto immortality, environmental harmony, and complete control of self.

Were we to stress material considerations only, such as the compensation which one will eventually receive as a result of his vocational talents being applied within the scope of the New Race, we would be attracting many who would be interested solely in the monetary possibilities of this association. For this reason, we but indicate that if you are sincere, you have a place and a job, *but this place and job is predicated upon your willingness and ability to meet your moral responsibilities.* Only those who are free of selfish considerations can be a part of a New Race whose very unselfishness is the reason for its existence.

LEMURIA THE INCOMPARABLE

The cost of this instruction is of secondary importance. The higher we evaluate the worth of the study, the lower is the relative cost in terms of dollars and cents. Consequently, we prefer to release the first lesson entitled the Law of Precipitation on a provisional basis whereby the prospective student may evaluate its worth independently of the monetary cost. In this way, the student is able to solve the monetary problem before he can limit himself by his present thinking.

The registration or sincerity fee is five dollars. Upon receipt of this consideration, we shall mail you the first lesson of the Lemurian Cosmo-Conception which is your introduction to the qualifications for Lemurian Citizenship. If, after studying it—thirty days, if you wish—you doubt your ability to qualify for participation in this New Order of the Ages, if you cannot grasp how you can immediately apply the knowledge contained therein to your most pressing problem, all you need to do is to return it in good condition, and your sincerity fee will come back to you by the very next mail.

If, after careful study, your good common sense dictates a further desire to continue with this magnificent research, terms will be arranged upon application.

The LEMURIAN FELLOWSHIP is not a commercial, but an educational institution. Therefore, we prefer that you send for the first lesson upon a provisional basis, although an Application for Registration may be had upon request. Unless you are completely satisfied that we have something you need and want, we shall reserve the right to cancel your registration privilege by refunding in full all monies you have paid. In this way, we are able to uphold the highest possible standards of studentship and reward sincerity by appropriate recognition.

The LEMURIAN FELLOWSHIP was created as a Sacred School designed to aid you in gaining Citizenship in the New Order. Therefore, we have fulfilled our initial obligation by placing this brochure in your hands. Now, all we ask is that you fulfill the conditions by which we are permitted to release the first lesson.

LEMURIA THE INCOMPARABLE

Having studied it, the initiative for your continuation with the instruction so as to achieve Citizenship will rest entirely with you. If you cannot make anything of it, the New Order is evidently not for you. Return the lesson for your money, and we shall consider the matter a closed issue.

Personal correspondence is invited from those who desire to know more of the study as well as the program. Write the Educational Division, Gateway Estate, Ramona, California.

This is either the greatest opportunity of your lifetime, or it means nothing. Only your preparation for Lemurian Citizenship will demonstrate.

HOW TO APPLY FOR ADMISSION

- 1st: Determine whether present trends in world affairs offer you definite assurance of any permanent improvement in civilization over the past decade or two. If not, there must be something you are seeking which will demonstrate that improvement.
- 2nd: At no risk to yourself, attach a five dollar bill, check, or money order to a personal letter stating why you believe you are eligible for consideration as a candidate for Lemurian Citizenship.
- 3rd: Mail this letter, together with your five dollar registration fee, to:

LEMURIAN FELLOWSHIP
Educational Division
Office of Registration
Gateway Estate
Ramona, California
- 4th: Acknowledgment of your application will reach you within ten days. If for any reason, your application has been refused because of evident insincerity, your fee will be re-

LEMURIA THE INCOMPARABLE

turned confidentially in full. If you have been accepted, you will be sent a registration form to be filled out in detail and returned. Its return will indicate to us your desire to proceed with the preparation.

- 5th: Address all mail regarding instructional material and all general information to the Educational Division of the LEMURIAN FELLOWSHIP. Address all mail regarding our introductory literature, our Lemurian publications, our national rental and sales libraries and other industrial matters to the Industrial Division of the LEMURIAN FELLOWSHIP. Address all mail regarding the Temple of the Jewelled Cross to the Statistical Division of the LEMURIAN FELLOWSHIP.
- 6th: In applying for admission, you are applying on a provisional basis only. Your initial satisfaction is your best guarantee that Citizenship can ultimately be yours by your continuation to a point of successful graduation.
- 7th: Having decided within the sanctuary of your own heart that you will become an outstanding credit to both yourself and society, then, like the merchantman seeking goodly pearls, may you find this your opportunity of great price.

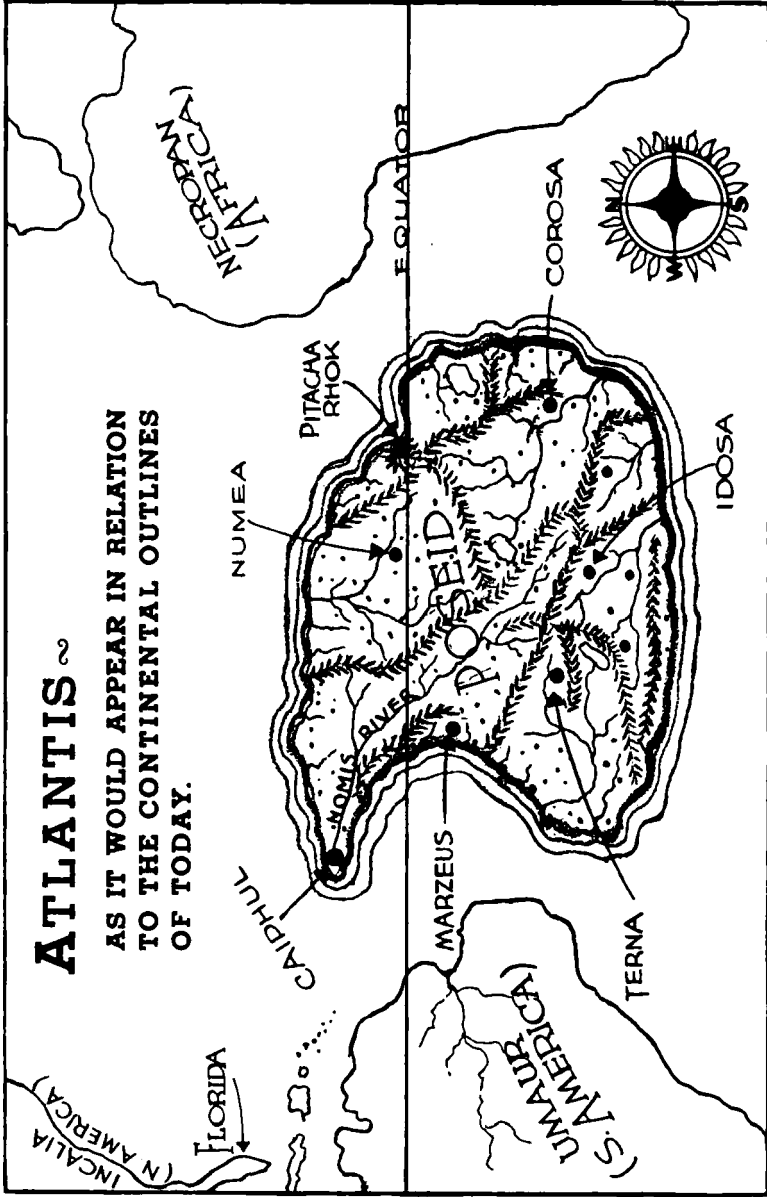
LEMURIAN FELLOWSHIP
Educational Division
Gateway Estate
Ramona, California

LEMURIAN FELLOWSHIP
Industrial Division
118 North Larchmont Boulevard
Los Angeles 4, California

LEMURIAN FELLOWSHIP
Statistical Division
118 North Larchmont Boulevard
Los Angeles 4, California

ATLANTIS

AS IT WOULD APPEAR IN RELATION
TO THE CONTINENTAL OUTLINES
OF TODAY.



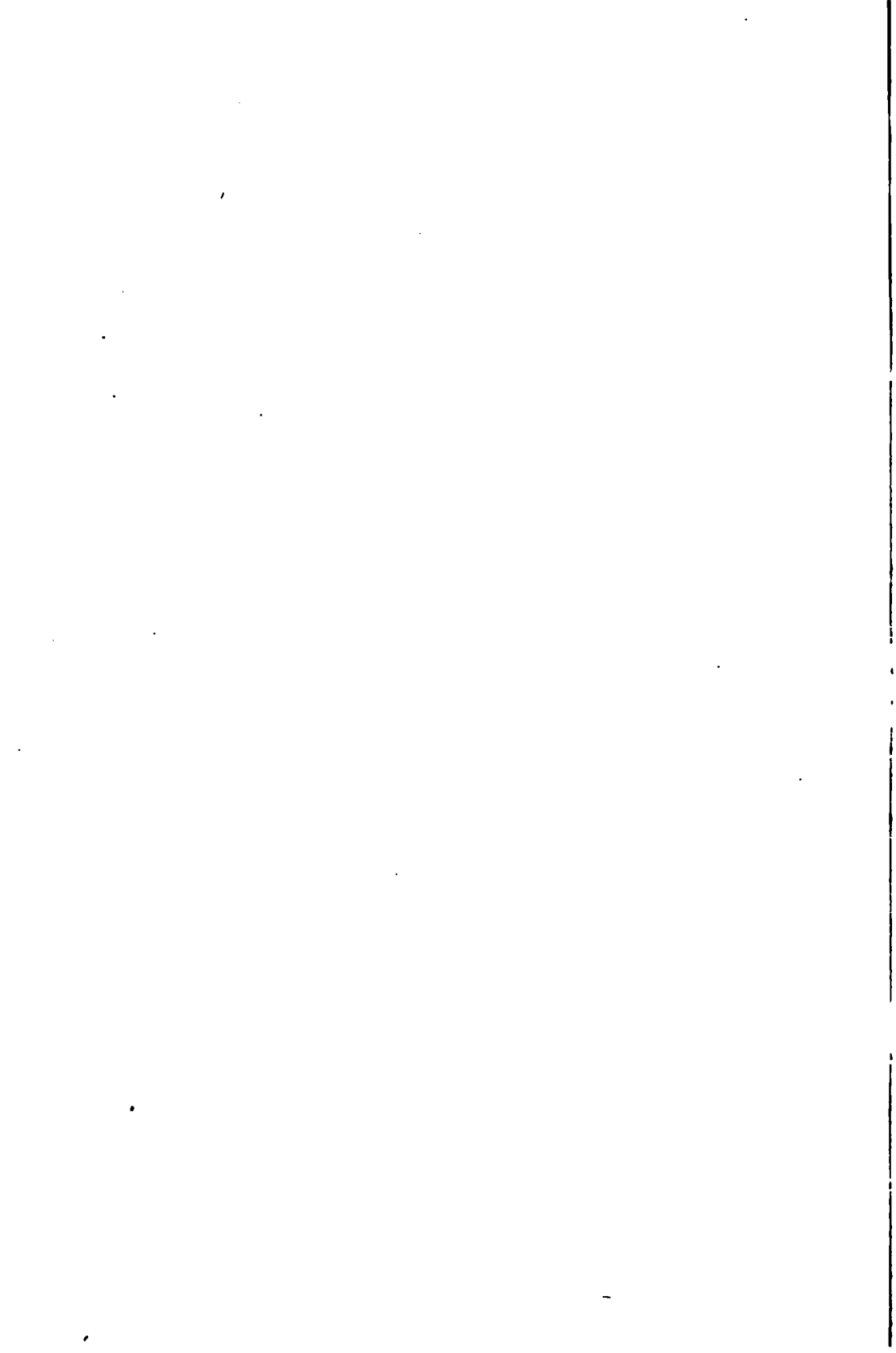
Lemuria

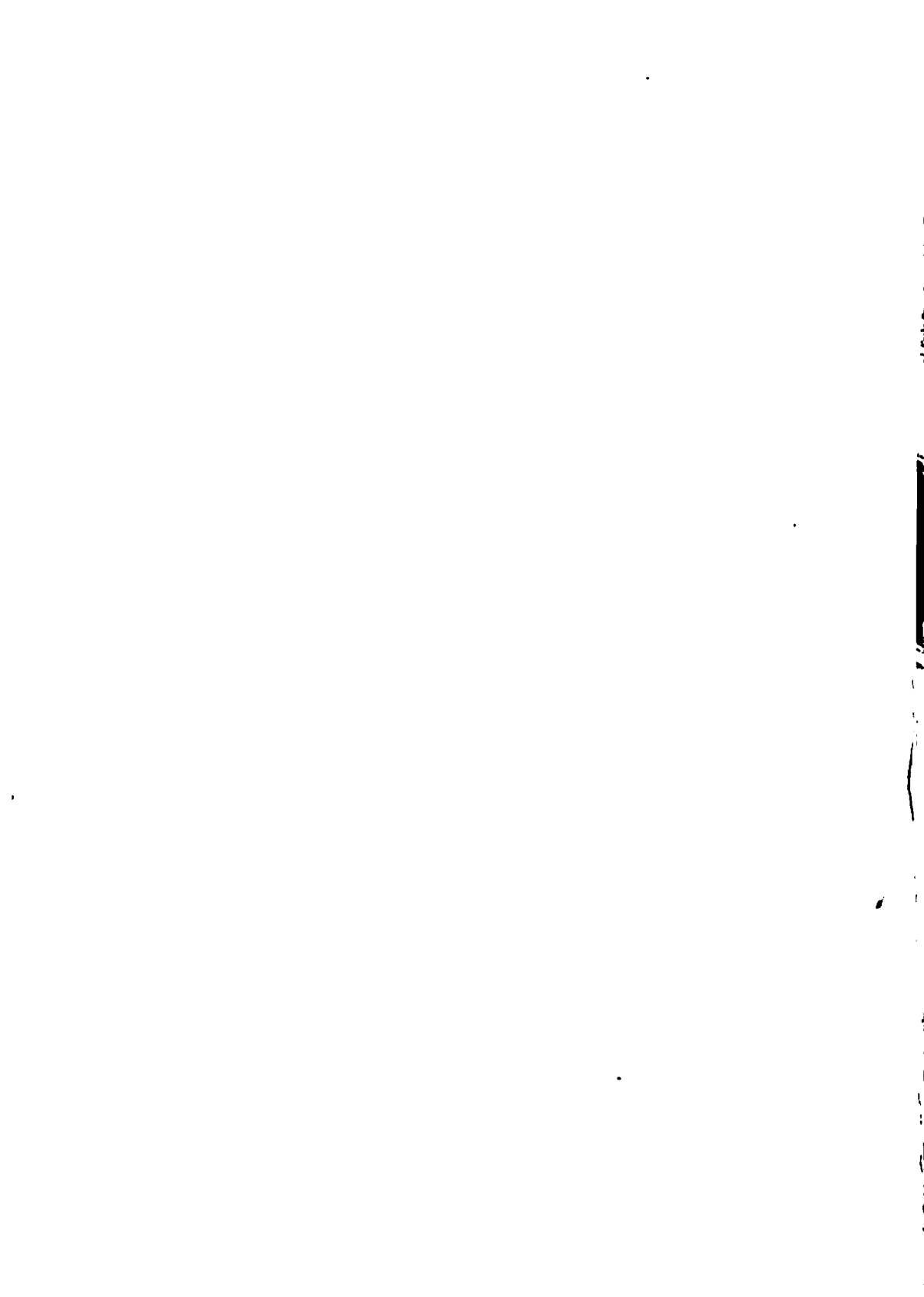
**Empire of a world asleep
Beneath the rolling sapphire sea,
The time draws nigh when you shall wake
And know a glorious destiny.**

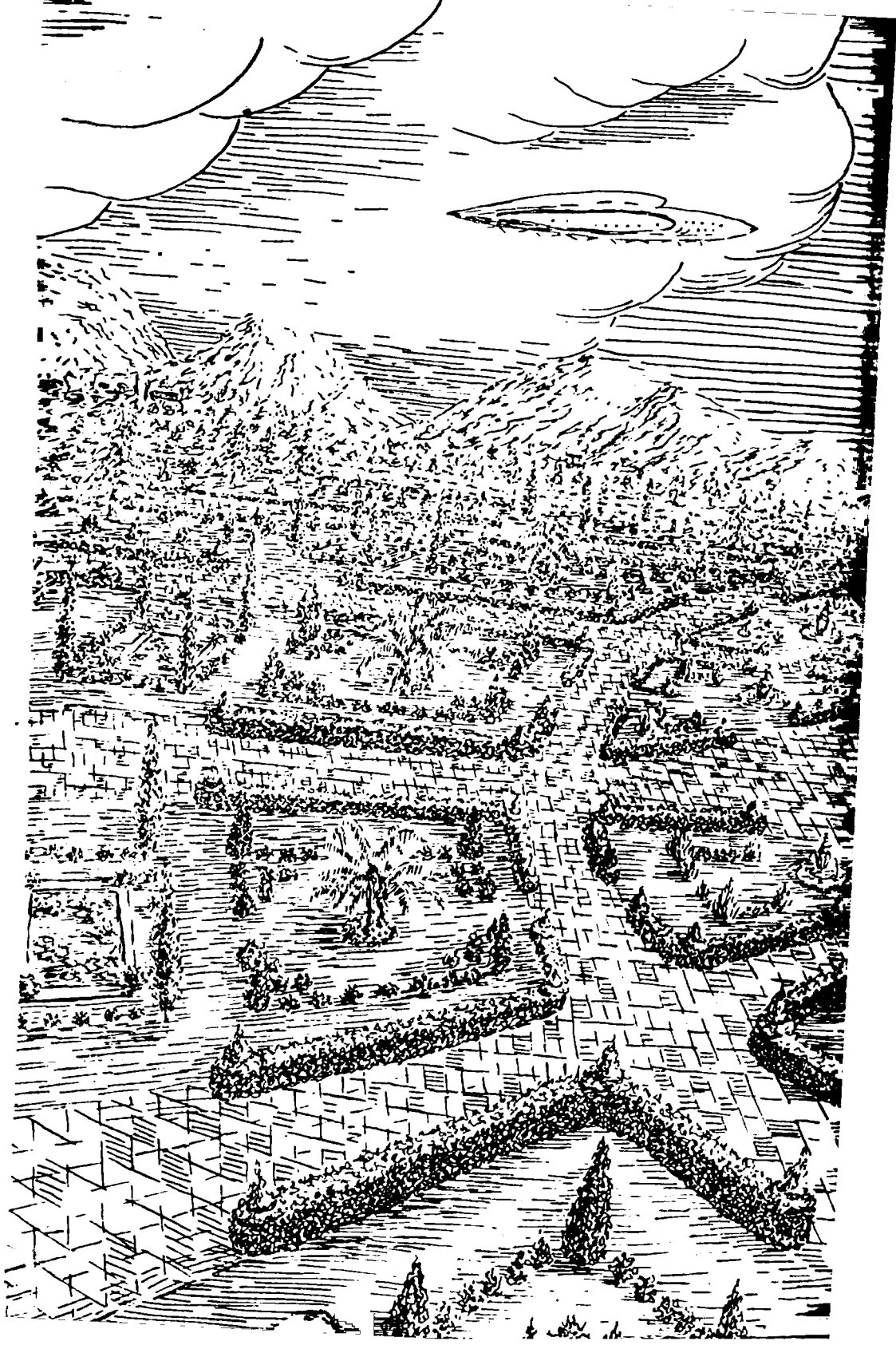
**The ages have forgotten
The Motherhood of Mu,
The calm and peaceful valleys,
The good, the beautiful and true.**

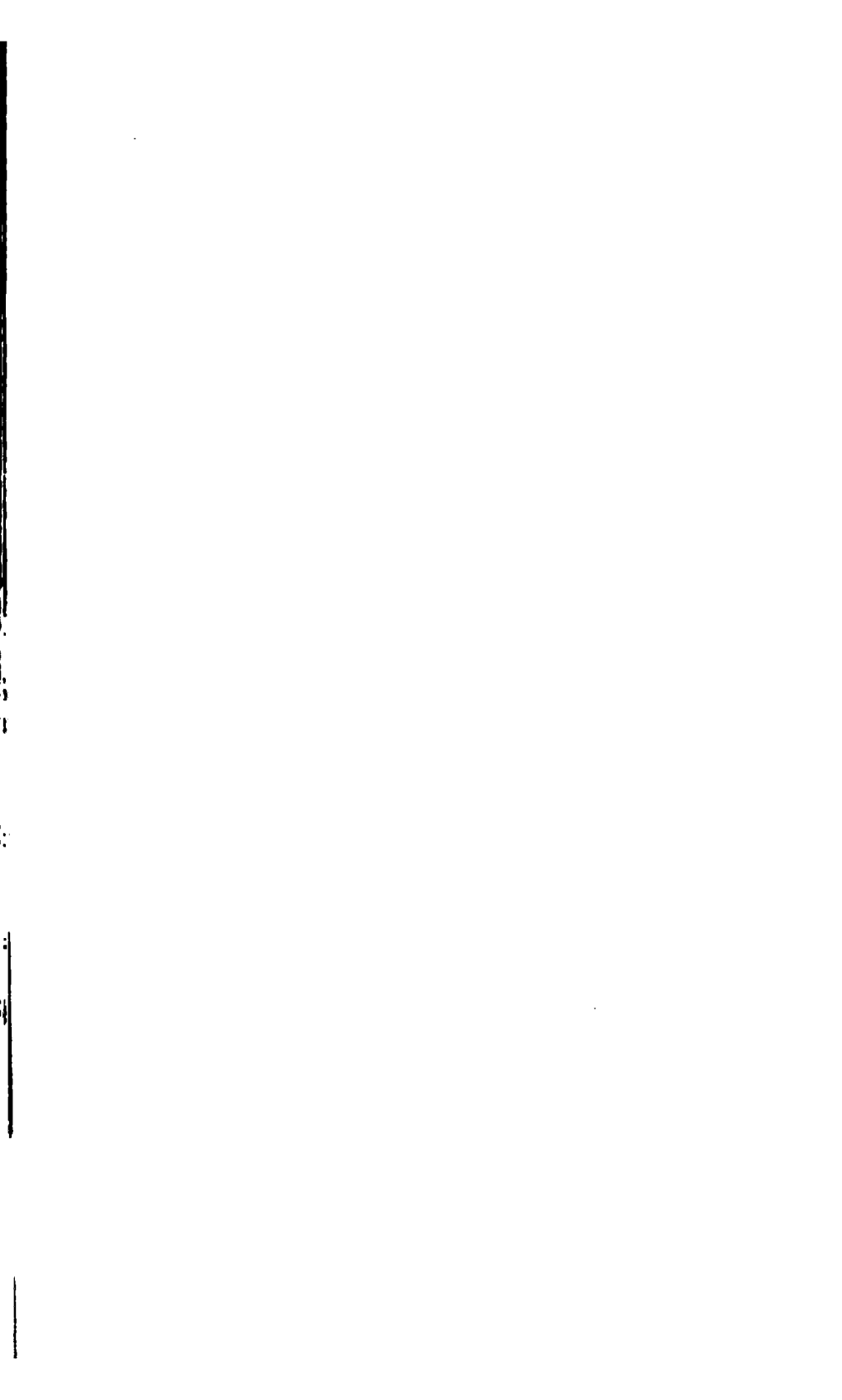
**The wisdom of your Masters
From their Temples filled with Light
Again speaks forth a Freedom
To a world oppressed by might.**

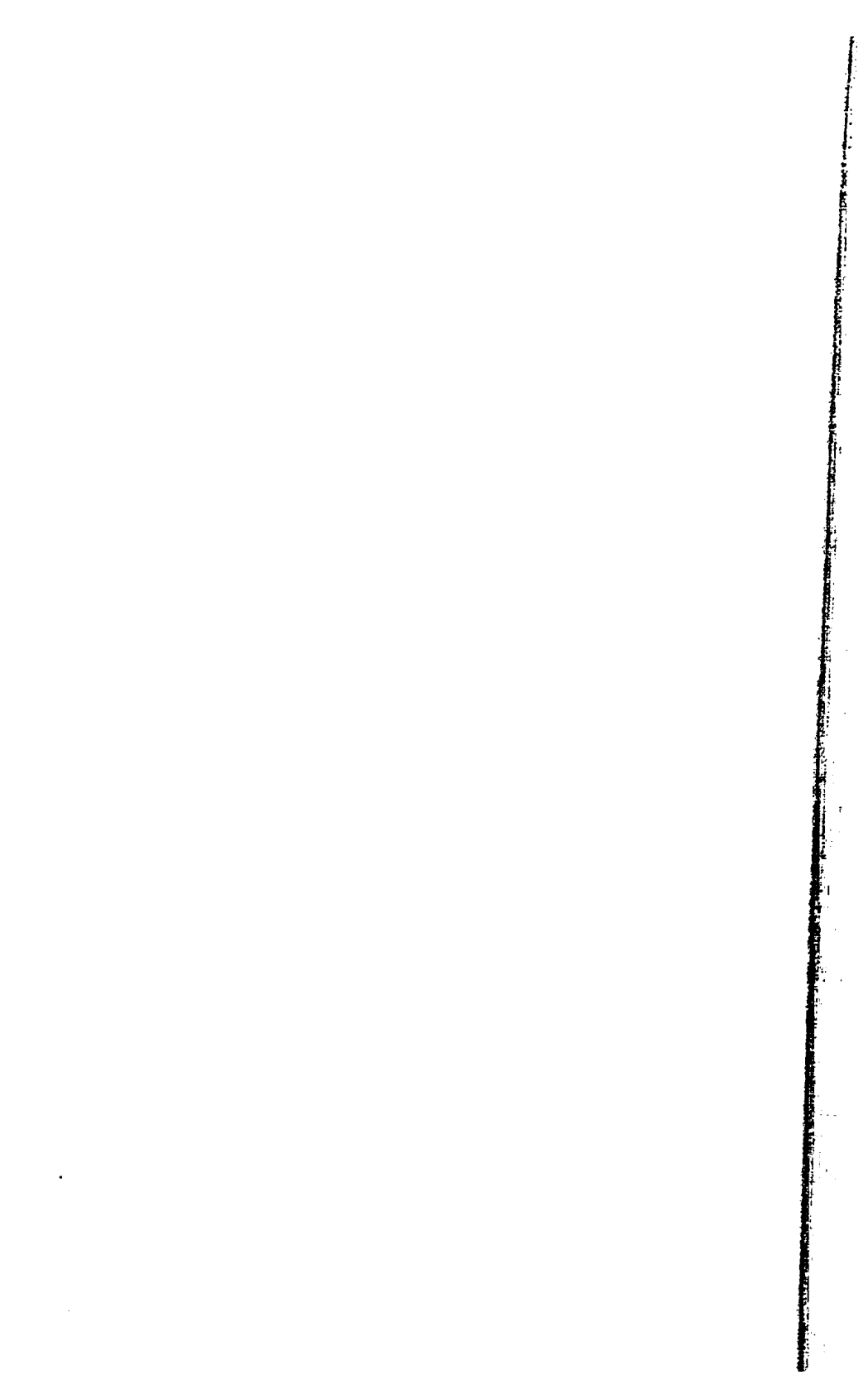
**New Order of the Ages,
The triumph of man's soul
Lemuria the Incomparable
Earth's Universal goal.**











UNIVERSITY OF ILLINOIS-URBANA



3 0112 039628950