

# the PYRAMID Guide

Vol. V, No. 3

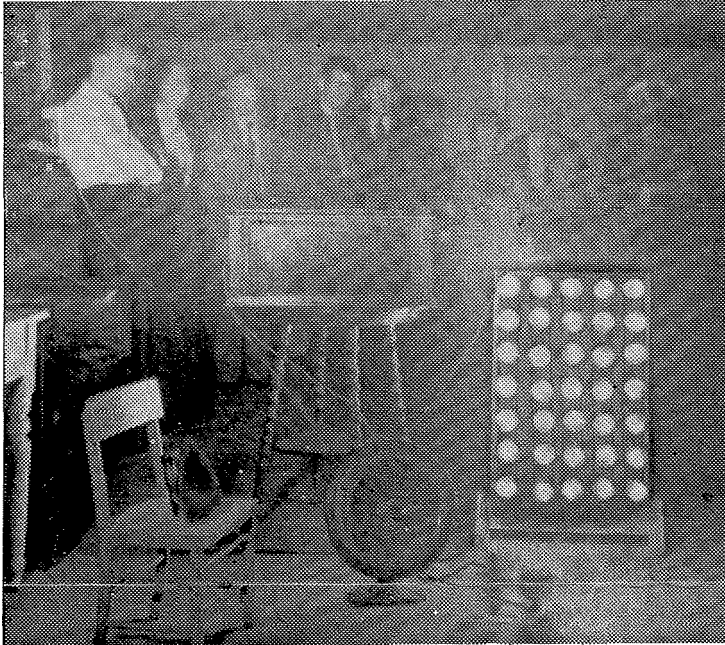
International Bi-Monthly Newsletter

Single Copy \$1.00 Yearly Pre-Paid \$6.00

Foreign \$7.00 Airmail \$10.00

Jan-Feb 1977 (No. 27)

DR. T. HENRY MORAY... Little known inventor, electrical wizard, early in this century found a way of siphoning electrical energy from the Salt Lake City, Utah skies. Beginning in 1909 from a 75 watt first demonstration, Moray in 7 years improved his radiant energy device — devoid of any other known power source — so it would produce 50,000 watts solely from antenna-ground connections. After one hundred twenty successful demonstrations before skeptical scientists, laymen and promoters the radiant energy device was taken to Washington, D.C. for study and testing. It is believed by researchers, the instrument was finally destroyed by Russian scientists hired by the American Government to determine its worth.



JUNE 1937 PHOTO GROUP watching the extraordinary Moray radiant [cosmic] energy device light a bank of standard 115 volt 100-75 watt lamps [lights so bright they blurred the photo]. The instrument also powered a special H.F. Motor; one 660 watt heater and a 1,000 watt flat iron.

By Christmas 1911, T. Henry Moray realized this electrical energy wasn't coming out of the earth, but to our planetary surface from some external source... "These complex electrical oscillators manifesting in the form of continuous, surging, ocean-like waves," he went on, "produce their more powerful energy in daylight, originating vibrations from some colossal energy reservoir in space."

## COSMIC ENERGY CAN LIGHT OUR HOMES

High frequency electricity from the Cosmos is available everywhere. Utah scientist T. Henry Moray, by 1916, proved Nikola Tesla's theory that an electrical instrument could be made capable of producing light, heat and power any place on the world's surface without the use of batteries, machinery or any moving parts. Moray's radiant energy device was a 35 pound, 7-1/2" wide, 26" long box. It contained a condenser, oscillators, tubes, a secret "valve" and a specially constructed high frequency transformer to control the voltage. Scientists visiting his Salt Lake City home were repeatedly astounded by the electrical wizard's simple but effective demonstrations.

Moray's instrument developed an electrical output by means of a siphoning process, rather than the widely used pumping methods seen in electrical pumps (generators). "I had the idea, prior to 1908, of using static based upon Benjamin Franklin's kite experiments . . . it soon became apparent this energy was *oscillating* and not *static* electricity which was of no assistance to me in obtaining the power I was seeking," he wrote. In his initial tests, Moray never doubted he would succeed after he finally gathered enough energy to cause a slight click in a telephone receiver.

In numerous demonstrations, backed by several sworn affidavits, Moray satisfied onlookers there were no hidden wires, batteries or outside power source of any kind. He allowed observers to disconnect either the antenna or ground connections which immediately turned off the power and lights. A tiny tuner weighing less than one ounce enabled Moray to retune the radiant (cosmic) energy apparatus for further electric output. He proved to doubting scientists that his electrical siphon could operate continuously for 157 hours or more. The only way it could be shut off was through vibration from a sharp blow or complete disconnect where an electrical flash would always appear. He performed several tests with the instrument set up twenty-eight miles from any known power lines or station. Moreover, experiments were conducted at least 100 miles from any originating radio broadcast stations.

Skeptics were astonished to see Moray stroking the end of a magnet for excitation, to fine tune the "cosmic energy" converted into electrical force. "This high frequency electricity is suitable for commercial purposes," he said. The spirited scientist had also invented and demonstrated a mental energy sound detector. Moray's cosmic radio could also pick up ordinary conversations several blocks away. The device cleaned the receiving signal of any static. Moray without benefit of microphone heard his own voice as he walked around the block. Later he heard the cries of a small boy being whipped by his father.

W.H. Lovesy, an investigating scientist, said at the time there were no known laboratory instruments yet invented capable of measuring the high frequency amperage and voltage involved. He had personally observed  
(continued on page 3)



## THE GREAT PYRAMID [The Hidden Chamber]

Since the earliest recorded times, from the source of man/woman's intuition, comes the ever recurring notion that an undiscovered chamber will be found in the Great Pyramid. History's most proven seers, pyramidologists, geomancers, alchemists, astrologers, Rosicrucians, Spiritual scientists, and the ancient texts generally agree: "The legendary room is sealed by a massive stone and/or metallic door, and is connected to its entrance of origin at the Sphinx by one or more hidden passageways."

The late medium and prophet, Edgar Cayce, said the initial portal would be found beneath the left forepaw of the 75 foot high, 150 foot long Sphinx. The enigmatic Sphinx, carved out of the Giza granite plateau, lies several hundred yards out from the Great Pyramid's southeast corner. Cayce, in this century, reaffirmed information given by savants dating back thousands of years. One wonders why a concentrated modern day search for the mysterious cavity hasn't yet materialized?

One ancient manuscript refers to a temple entrance lying under the Sphinx, long sealed with a secret, spring-latched, bronze gate. "Once inside," the narration adds, "explorers can expect to enter a temple with galleries, some even carved into the Sphinx' belly. These corridors create a maze eventually leading up through the Great Pyramid's rock foundation, terminating in the King's Chamber, directly below the apex and one-third the distance up from the base."

The granite mass supporting the pyramid attains an elevation approximately 100 feet above the Nile River. A 200 foot shaft bored from the lower interior of the Great Pyramid failed to probe into a softer or unlike formation in the pedestal supporting the monument. Thus, any hidden passageways — if they exist — must have been fashioned out of solid granite and should respond to some form of sounding equipment.

Imbilicus, said the Sphinx provided an entrance to the sacred vaults of initiation and tests by the Magi. He designated an opening between the Sphinx' forelegs. Only the Magi knew the location of the door latch, triggering device, and only a Magus knew the way through the labyrinth into the King's Chamber. The passageways were believed to be so cleverly arranged the uninitiated could wander indefinitely through the Temple of Mysteries' subterranean network only to return time and again to the point of beginning.

One historical account alludes to the illumined scribe, Maya, born in 1428 B.C. who ostensibly returned to the Great Pyramid from a previous incarnation as Joseph, son of Jacob, and reportedly a man of wondrous psychic gifts. Maya, it is said, rediscovered the records he concealed in the pyramid while living an earlier lifetime as Joseph.

Thoth, Egyptian god of science and scribe of the gods, also identified with the Hebrew Master "Enoch," possibly a designer-builder of the Great Pyramid was also believed incarnated as Imhotep in Egypt ca. 3000 B.C. and later as Hermes Trismegistus (Thrice Greatest). In each lifetime the immortal master was said to have frequently entered the secret chambers. Imhotep the architect served King Zoser in the 3rd dynasty, and supposedly rediscovered the original "Vril Sticks" he had secreted in the Pyramid's inner sanctum as Thoth in a previous incarnation. The Vril Stick likely gave Imhotep control over light and the power to perform many miracles. When raised, it is believed the wand caused an action upon rays and created vibrations overcoming the pull of gravity and the limitations of other known physical laws.

Pythagoras in 582 B.C., Plato, Thales, Eudoxus and even Jesus were believed to have received high initiation in the Great Pyramid. The precise location of this ancient hold remains speculative today, but there are now strong indications that its physical location will be found in the lower  
(continued on page 3)

My interest in energy phenomena led to varied Pyramid experiments and studying the results of similar researchers in the field. "SUNDANCE, INC.," a learning resource center in Athens, Ohio, agreed to make research facilities available.

I had two 12 foot base-open frame wood pyramids built, along with one 8 foot base cherrywood model. Mosquito netting draped along the sides, and a canvas canopy covered the assembly for living purposes.

A distorted time concept and anything I did in the pyramid, reading, talking, or simply relaxing, produced in me a reluctance to leave the pyramid space. Several Sundance clients who spent time in the pyramid experience similar reactions.

After nine days in the pyramid a strong menthol cigarette was lit and found to have little menthol taste. It was quite mild. Two cats at Sundance attracted to the Pyramid spent considerable time in the NE corner. Insects too were attracted to the mosquito netting and seemed to frequently hover around the apex.

A clairvoyant medium from Central Ohio gave a class at Sundance and joined me inside. She sat directly under the apex, pausing to face each cardinal direction for several minutes. Looking east, and with little effort her perception became acutely visual. Meanwhile, lying down nearby, I felt my entire body vibrating. Directed south, she described a feeling of quietude and relaxation. To the west, the subject became extremely clairaudient, sensing the sounds of the woods. Turning to the north, she once again felt strong, high vibrations and saw a bright, white light. Of all directions, she favored northeast, surprised at the effortless flow of energy through her sensing vehicles while inside the pyramid chamber.

This past summer — concurrent with the experiments — I coordinated a three-lecture introductory workshop on pyramids. We conducted taste tests and ESP experiments with a parapsychologist.

Some findings of my research with various foods and liquids included: a dessication and preservation of food stuff placed under various 6" to 12' base sized pyramids, constructed of different materials. Banana, tomato, apple, nectarine, pear and bread were preserved inside the models compared to controls placed under a square box of approximate equal volume: all control specimens finally rotted or became molded. Milk inside the pyramid turned to yogurt within 2 weeks.

I used pyramid water to treat a bad case of poison ivy this summer and it completely stopped the itching. Others on staff at Sundance, in turn, used it with similar results. While Pyramid experiments dealing with foods have proven interesting, I feel the benefits derived from pyramid energy in the field of educational training would be of far greater significance to society. I enjoy sharing with others and am interested in collaboration.

Judy Solomon 102 E. State St., Apt. #2 Athens, Ohio 45701

## Fourth Dimension Reachout CAN TELEPATHY TRANSCEND TIME?

We have sufficient proof that telepathy transcends the limitations of space. It is most likely immediate, and without time delay any place in the Universe. The energies associated with telepathy move in the mental plane, but are not limited to one dimension.

Telepathy goes back in time to capture the thoughts and expressions of master writers through the medium of printed words [symbols] in books and manuscripts. The artistic genius of composers via musical scores, great painters on canvas and the voice of the orator on recordings all freeze and transcend time long passed by.

What about future time? This poses the exciting possibility of communicating ahead of the clock. We already have evidence of precognition — forecasting future events with some measure of accuracy. In addition, living plants or properly tuned crystal may provide the doorway for interplanetary and interdimensional telepathy.

Is all wisdom and knowledge somehow imprinted in the thought spheres awaiting the tuned-in mind? In time travel, moving forward or back in time, we do it with our mind and psychometrists achieve it with astounding accuracy by picking up vibrational information from an artifact held in the hand. Cosmic [race] memory is just as real as precognition and prophecy.

The world's mediums contact conscious intelligences in other dimensions. These channels are intuitive, telepathic receptors of wisdom and information, usually beyond their own knowledge and learning. This supports the mystics belief in the universal "otherness," the "oneness," a complete interdependency of all life with communication as the ultimate lifeline for all.

If every thought, every symbol is already imprinted in the mental plane we only need a suitable tuner to bring in the message. Our mind is the tuner. Striving for information is an intellectual pursuit. Through our passive, intuitive processes we become telepathic tuners much as we enjoy music and a wide variety of other sounds in a passive state.

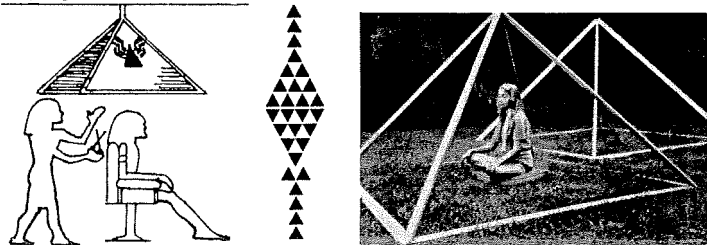
But with any functioning [mental] radio, we need a good antenna, [the pyramid will do fine], and a power unit, [amplifier]. Since we are magnetic and electrical we can summon the life forces as prana and psychic energy to focus on thought to make things happen, whether we send the energies out or bring them in. The balanced, receptive, focussed mind, coupled with a vital body creates the condition for clear telepathic communication to record.

It's certain that telepathic rapport must first of all begin with self communication. This is what mind control and biofeedback courses try to achieve. No sending or receiving agent goes very far without being in touch with his/her own mental and physical equipment to a large degree. We frequently refer to this level of "Beingness" as awareness or altered states of consciousness. There's a very good argument that we can never alter consciousness, it just "is." We can only alter or increase our awareness of things. The well-springs of consciousness issue from the logos and universal mind.

Imagine the great thoughts and ideas that flow through the minds of people, seemingly unrecorded. Maybe they are already impressed in the great Akashic records. If the recipient of such a message doesn't act upon it, impressing the idea into our mental-physical world, this germ of invention — when its time has come — will flow through the mind of another. Sometimes two or more people living on opposite sides of the world will simultaneously develop a new invention. Jung called this phenomenon synchronicity.

This suggests that all wisdom and knowledge is anxiously pushing through for expression. It's already there, find it if you will...

When we come to that plane of awareness where we can recognize the worth of an idea and generate excitement to manifest it, whether it comes out of the past or future realms of Akasha, the "baby" is born. It all depends on self, or inter-communication. When does telepathy begin, where does it end? Telepathy must be synonymous with consciousness and creation, past, present or future. It just is "Ising."



### HAIR STYLING UNDER A PYRAMID

What can the reported preservative and rejuvenative powers of the Great Pyramid have to do with hair? The latest Los Angeles rage features a haircut under a pyramid in Sassoon Salim Sassoon's Westwood Village salon. Sassoon [no relation to Vidal], after years in the hair profession ushers in a new age for the cutting, color and care of the hair through the use of pyramid energy. "Come in and relax under a pyramid while we give you a special, precision haircut," Sassoon announces, "carefully designed to suit each individual." A pyramid hangs suspended over each chair in the salon. Demands for the stylist's time and facilities have almost tripled since he first introduced the pyramid concept...

"I've also created and perfected a totally new shampoo whose key ingredient is contained within the pyramid itself," he writes. "It's more than just placing a bottle of shampoo under a pyramid and leaving it there for a while. Anyone can do that," Sassoon adds. "My product is different. I've worked 13 years to understand how to correctly harness the pyramid's fantastic energy. My shampoo is unique... Its secret is found in the timing factor as much as through the pyramid energy."

Sassoon's background in the hair profession goes back to his East Indian and Egyptian culture. His family established themselves in the industry in Burma in the late 30's and early 40's. Sassoon combined the family business with the mystical concepts of his East Indian and Egyptian tradition to create a holistic mystery center for the betterment of the hair-cutting profession...

Sassoon has also completed a book relating ancient energies to the modern day world. Sassoon Salim Sassoon's salon is located at 925 Brompton Ave. Westwood Village, California. [phone number]

**BACK ISSUES OF THE PYRAMID GUIDE, INTERNATIONAL BI-MONTHLY NEWS-LETTER...** in any combination or series...  
Issues number 1 (Sept.-Oct. 1972), through current issue number 25 @ \$1.00 each. Order P. O. Box 30305, Santa Barbara, California 93105.

#### THE PYRAMID GUIDE

An international bi-monthly newsletter issued Jan., March, May, July, Sept., and Nov. Annual Subscription rate \$6.00. Canada and Mexico, \$7.00 annual rate (airmail \$3.00 extra). All other foreign \$10.00 (by air mail only). Edited and published by Bill Cox of EL CARISO PUBLICATIONS, P.O. Box 30305, 741 Rosarita Lane, Santa Barbara CA 93105.

Opinions expressed by contributing writers do not necessarily reflect those of the editorial staff and publisher of the Pyramid Guide and El Cariso Publications.

Copyright © 1977 by El Cariso Publications, printed in the United States of America. All rights reserved. No part of this letter may be used or reproduced without written permission of El Cariso Publications

PYRAMID SHAPED, SALT CRYSTALS...THE MALDON CRYSTAL SALT CO. LTD. MALDON, ESSEX, ENGLAND, AFTER EVAPORATING TONS OF DEEP, TIDAL WATER THE SALTINGS LEFT EXPOSED TO NATURE'S FORCES, DRAW THE CAREFULLY FILTERED WATER INTO LARGE SHALLOW PANS AND HEAT IT FROM BELOW. FOLLOWING A BOILING AND SIMMERING PROCESS THE PURIFIED BRINE FORMS PYRAMID SHAPED, SALT CRYSTALS. SAMPLES WILL BE SENT UPON REQUEST. **BUDDHA'S REMAINS FOUND...**A 2,500 YEAR-OLD SOAPSTONE CASKET HAS BEEN UNEARTHED BY A TEAM OF INDIAN ARCHEOLOGISTS IN NORTHEASTERN KAPILVASTU, INDIA. AN INSCRIPTION ON THE LID CONFIRMS THE BONES AND ASHES INSIDE ARE THOSE OF PRINCE SIDDHARTA (GUATAMA BUDDHA). IN CONFORMANCE WITH BUDDHA'S REQUEST, ONE-EIGHTH OF HIS MORTAL REMAINS WERE TO BE BURIED UNDER A MOUND IN KAPILVASTU BY THE SAKYAS. **MOON-TREE...**THE UNIVERSITY OF ARIZONA PLANETARIUM DISPLAYS A 12 FOOT HIGH SYCAMORE GERMINATED FROM SEEDS CARRIED TO THE MOON ON APOLLO MISSION 14, IN 1971. IT WILL BE INTERESTING TO SEE HOW THE MOON'S ACTION AT A DISTANCE WILL AFFECT THE VIGOROUSLY GROWING SYCAMORE. **TEN THOUSAND YEAR-OLD SOLAR BOAT FOUND...**EGYPTIAN ARCHEOLOGIST KAMAL AL MALAKH, RECENTLY DISCOVERED A HUGE, CEDAR, SOLAR BOAT, EXCAVATED AT THE FOOT OF THE CHEOPS PYRAMID. THE VESSEL IS BELIEVED MADE FROM ORIGINAL CEDARS OF LEBANON, AND, UNIVERSITY OF MICHIGAN SCIENTISTS ARE CERTAIN THEY HAVE IDENTIFIED THE REMAINS OF **QUEEN TIY**, KING TUT'S GRANDMOTHER, UNCOVERED IN EGYPT'S VALLEY OF THE KINGS IN 1898. THE QUEEN'S DISCOVERY PROVIDED THE MISSING LINK IN A 3,000 YEAR-OLD MYSTERY. THE ANALYSIS OF A STRAND OF QUEEN TIY'S HAIR, ENCLOSED IN A TINY GOLD CASKET FOUND IN KING TUT'S TOMB BACK IN 1922, GAVE THE SCIENTISTS POSITIVE CONFIRMATION. **EGO ASTROLOGY...**RECEIVED A SETBACK RECENTLY WITH THE FOLLOWING ANALYSIS PUBLISHED IN SUN-SIGN REVELATIONS \$6.55, BROADWAY BOOKBINDERS, DEPT. S-12 - 245 W.19 ST., N.Y., N.Y. 10011. BEWARE OF THE **ARIES** EGOMANIAC, **TAURUS**, INSENSITIVE BULLY, **GEMINI**, OF DIVINE DISCONTENT, **CANCER**, OEDIPAL COMPLAINER, **LEO**, PRIMA DONNA, **VIRGO**, CENSOR, **LIBRA**, NARCISSIST, **SCORPIO**, LOVE-OBSSESSED DEMORALIZER, **SAGITTARIUS**, DON JUAN, **CAPRICORN**, HONOR SEEKER, **AQUARIUS**, FAME FREAK, AND **PISCES**, SPIRITUAL PANHANDLER. **EASTER EGG STILL GOOD...**FROM FRANCES GURLEY; A PYRAMID TREATED EASTER EGG DATING BACK TO EASTER SUNDAY 1972, COLOR AND FLAVOR IS STILL GOOD TODAY. A CAN OF MILK SO TREATED, BEGINNING JULY 5, 1975, HELD ITS FRESHNESS UNTIL AUGUST 25, 1976. THE FOLLOWING DAY, AUGUST 26TH, THE CANNED MILK WAS NO LONGER FIT FOR HUMAN CONSUMPTION. **RECORD ALBUM FOLDS INTO IDEAL HAND LEVITATION MODEL...**WATCH FOR AMBROSIA, FOUR-MAN, FOLK ROCK GROUP ALBUM, 20TH CENTURY RECORDS, 8544 SUNSET BLVD. LOS ANGELES, CA 90069. THE MUSIC IS GOOD AND THE FOLDING ALBUM DESIGN WITH ONE OPEN SIDE MOST FUNCTIONAL IN HAND LEVITATION EXPERIMENTS. SEE PYRAMID GUIDE EDITION #5, MAY-JUNE 1973. **HARNESSING THE SUN...** ONE OF THE BEST ON HOME SOLAR ENERGY UNITS CAN BE FOUND IN JOHN KEYES' BOOK OF THE SAME NAME. FUEL BILLS CAN BE CUT FROM 30% TO 90% ACCORDING TO THE AUTHOR. KEYES SPELLS IT OUT IN EASY TO UNDERSTAND FORM. FOR INFORMATION WRITE: CLINT MARCHBANKS, 4704 EMERALD ST. BOISE IDAHO, 83704. **LIGHT AFTER DEATH...** PATIENTS WHOSE HEARTS HAVE STOPPED BEATING FOR UP TO TWO HOURS AND WHO HAVE BEEN BELIEVED CLINICALLY DEAD HAVE RETURNED TO CONSCIOUS AWARENESS TO REPORT A BEAUTIFUL, WEIGHTLESS EXPERIENCE. GOING THROUGH A DARK TUNNEL, THEY HEAR A BUZZING SOUND, THEN LIGHT AND THE VOICES OF DEPARTED ONES, ACCORDING TO DR. KUBLER-ROSS, AFTER A 6 YEAR STUDY.

**COSMIC ENERGY [From Page 1.]**

Marconi's thermo-electric effects and Nikola Tesla's electric demonstrations. Lovesy went on to declare, "With proper facilities, Moray machines could be made to any size and power desired."

In October 1930, Nathaniel Baldwin, another investigator, noted: "Mr. Moray's device may be harnessing some solar light, heat, radio and stellar waves, just as the crystal set absorbs radio signals." Moray's little detector could replace the tuning crystal in a crystal set and substantially improve the reception over the Erla crystal. Moray even invented lead that withstood exceedingly high temperatures and substituted a lump of this semi-transparent lead for a crystal. "It gave the radio wonderfully improved reception..." said Baldwin.

Nikola Tesla, in 1904, wrote: "There's a vast quantity of available energy in space. It won't be long until Man will hitch machines to the very wheelwork of nature." The electrical genius called attention to the awesome electrical power issuing from the Aurora Borealis. "This and other untapped energy from space only awaits the right accumulator." It is believed Tesla found it. Moray rediscovered it. Keely and others may have possessed knowledge of this little known secret. But it's no secret we only pump (transfer) electricity from one place to another. Electricity is neither created or destroyed. After we use electricity it merely returns to space awaiting the time for re-use again. Its originating domain may be the ether. Mass and radiant energy are likely interchangeable as reported by Moray and his supporters.

"Prejudice is the child of ignorance," Moray wrote. "Promoters exploited him and his inventions," said Fred Dobson. "One \$100,000 investor allegedly stalled and held up the patent process." Moray's radiant (cosmic) energy device may yet return to the technological scene, but it has two obvious drawbacks. (1) It could suddenly throw the world's entire nuclear power electrical and gas energy systems into obsolescence, and (2) there will be little or no commercial profit in its fabrication. It can function without excessive wires, poles, motors and machines, using only nature's electrical forces, devoid of the need for fossil fuels and elaborate storage and transfer facilities. Research courtesy of John Waters, Baker, Oregon

**HIDDEN CHAMBER [From Page 1.]**

reaches of the Great Pyramid. The secret chamber's invisible, metaphysical counterpart, some 30 feet high, rests atop the truncated platform of the Great Pyramid, referred to as "the Secret Chamber of the Most High," seen only by one sufficiently evolved on the spiritual path, capable of interpreting the hidden meaning in the sacred symbols encoded there. This elevated site is depicted as the Eye of God on the American dollar bill, and was originally conceived by the Masons and Rosicrucians, who were among the Spiritually aware Founding Fathers of the United States.

A Danish mathematician has plotted the most logical location of the inner chamber. If his numerical calculations of the Great Pyramid are correct — and they follow precise pattern relationships — a subterranean cavity will soon be found. Physical probings on site by Danish explorers suggest the presence of a heretofore undiscovered cubicle of undetermined size and shape, awaiting entry behind a solid stone wall in the lower recesses of the ancient time capsule.

Humanitarian, Starborn Beings, wearing the seemingly invisible disc on their foreheads, and called the "Goodly Company," are believed to have directed the Great Pyramid's construction, and not just Egyptians, as presupposed by historians, merely because the ancient, Pyramid Library lies in Egypt.

A frequently mentioned, alternate physical location where a secret chamber may be found, rests two-thirds the distance up from the base, in a line directly below the apex. Several theories suggest a hidden Atlantean crystal or celestial generator will be found there. Thus, the possibility of two or more secret rooms may exist, one in connection with the orthodox sciences; the other with spiritual sciences and initiation.



A FINE TRIO OF PREHISTORY RESEARCHERS...[L] JOHN MICHELL, English author of "View Over Atlantis," and other notable works. [Center] DON CYR, of Santa Barbara, California, Editor-Publisher of Stonehenge Viewpoint, and world authority on old-track and ley (energy lines), [R] EGERTON SYKES, of Brighton, England, of Markham House Press, Editor-Publisher of "Atlantis" and several related articles and a leading authority on the Lost Continent of Atlantis. All gathered during the Britishers' brief, sharing visit to Santa Barbara, October 1976. (Photo by: Bill Cox)



1970 PHOTO OF THE LATE, GREAT DOWSING MENTOR, VERNE L. CAMERON... Cameron's early theories and research hold up very well with the unfolding of New Age, metaphysical discoveries

PYRAMID RAY REFLECTION ANALYSIS  
by David G. Alexander

This is a theoretical analysis of the geometry of the Great Pyramid. It is based on the postulate that the Pyramid's sides reflect energy in the form of rays in a plane manner. Rays intersecting symmetrically in the central vertical plane are of particular interest. Although the analysis is arbitrarily developed, results surprisingly explain quantitatively:

1. A new Golden Ratio relationship in the pyramid;
2. The reason why pyramid energy effects don't necessarily increase when the capstone's size is increased beyond a certain value; and
3. The reason why pyramid energy appears greatest in the center, one-third the height of the model.

Referring to the pyramid figure ABC viewed from the side. Rays 10 and 12 of a hypothetical energy obey the law of plane reflection. This occurs from a plane reflecting surface horizontally incident on the sides AC and BC in a linearly opposed manner.

The sides AC and BC of the pyramid suggest the property of one-way mirrors. Note rays 10 and 12 passing through the sides AC and BC, reflecting in plane manner from the sides BC and AC respectively, thence into the interior of the pyramid, projecting through the pyramid base AB as designated at 10 and 12.

Now to determine points E and F on the sides AC and BC. The rays pass through and are reflected so they intersect at point D, the center of the pyramid base AB. Any rays horizontally incident on the pyramid above the points E and F, being the same height from the base AB, intersect in the pyramid's central plane. This is perpendicular to the plane of the figure and passes through the apex C and point D, in the center of the base AB due to symmetry.

Considering the side AC and the point E. Since ray 10 passes through the side AC parallel to the base AB, angle 'b' is equal to an angle 'a' between the side AC and the base AB. The angle 'b' is also the angle of incidence of the ray 12 on the side AC. The angle of reflection 'c' must be equal thereto. The angle 'c' is therefore equal to the angle 'a'. Triangle EAD is an isosceles triangle similar to triangle ABC. The well known ratio of the side [or apothem] AC to one-half the base AB is equal to the Golden Ratio. Applying the law of similarity to triangles, it may be deduced that the ratio of the base AB to the distance AE is also equal to the Golden Ratio.

The triangle EFC appears and immediately brings to mind the capstone once provided on the Great Pyramid, although the actual capstone was much smaller in proportion. Remembering none of the rays incident on the pyramid below the triangle EFC intersects inside the pyramid. Assuming the only rays intersecting inside symmetrically produce pyramid power, if the capstone increases pyramid energies it need only be provided as indicated by the triangle EFC. Thus the TRIANGLE EFC EXPLAINS WHY LARGER CAPSTONES DO NOT FURTHER INCREASE PYRAMID POWER.

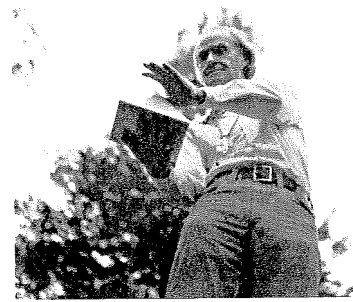
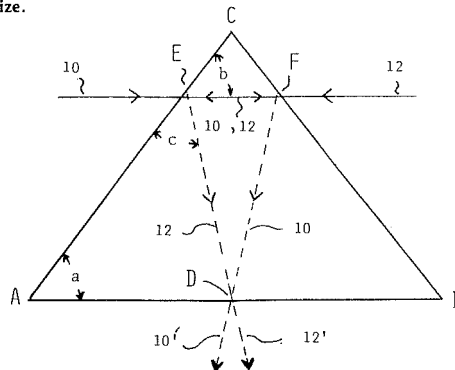
Rays intersecting symmetrically inside the pyramid have the locus of a triangle with its peak at the apex of pyramid C. It has a base in the pyramid's central plane [base AB thereof]. The base length of the energy triangle is equal to EF. This was illustrated in my article in Pyramid Guide #25, Sept-Oct '76 issue.

It is incorrect to place the center of gravity of the pyramid at one-third the height. The center of gravity of any pyramid is actually focussed at one-fourth the height thereof.

The centroid of a triangle lies at one-third the height. A triangle's centroid formed by the intersecting rays in the pyramid lies at one-third the height of the pyramid.

THIS GIVES A QUANTITATIVE EXPLANATION WHY THE ENERGY MAXIMUM REGISTERS AT ONE-THIRD THE HEIGHT OF THE PYRAMID IN THE CENTRAL PLANE.

My parabolic cones, as described in Pyramid Guide #25, also serve to compress the energy triangle into a vertical line. This concentrates the structure's entire energy into the vertical axis. A wire extending the vertical axis may convey all pyramid energy into an external receiver. Energy produced in my cones indicates it is at least equal to — sometimes — greater than energy produced in a pyramid of comparable size.



Question: Mrs. Betty Hearon, of Bothell, Wash. writes: "Since your special session following the Honolulu Rainbow Festival, I've been passing on some pyramid information. One friend built an 18" high pyramid from 3/8" copper tubing and placed a reluctant, slow growing cucumber inside. Now this plant has not only grown larger than the others but has spread out in a large circle on the lawn. We can hardly wait to taste the cucumbers. Another friend who has read a book on the pyramid idea claims the metal used should be non-conductive. The model involved in the cucumber test was conductive however. Which of the two theories is correct?"

From the volume of research in evidence and years of trial and test by the late Verne L. Cameron, we're convinced conductive materials are better with copper and gold plated materials the most superior metals yet reported. What do you think?"

Answer:

This is a question continually confronted in lectures and workshops, everywhere. The following recommendations are subject to change based on new information. To date, our years of research indicate conductive metals are best because of resonance and are ideal for constructing and experimenting with pyramid models. In the order shown they are: 1. solid copper, 2. copper plated brass, 3. brass, 4. pure silver or silver plated metals, 5. nickel plated metals, 6. stainless steel, 7. aluminum [with the exception where physical contact occurs], and 8. aluminum foil. Gold plating has proven a major disappointment, not only in pyramid tests but with gold plated dowsing devices, such as the Aarameter, pendulums and other subtle [life] energy sensing instruments.

Metal beams, poles, tubing and wires are excellent. As for minerals: 1. Pure Brazilian quartz, 2. carbon [perhaps the diamond] shape will be all important, 3. pure gold, particularly when combined with clear quartz, 4. not necessarily in the following order: a. the emerald, b. amethyst, c. topaz, d. lapis lazuli, e. ruby [may be negative in certain tests], f. peridot and several other jewels and semi-precious stones. To repeat: shape, size and relationship of mineral or stone with form[s] and other materials used is critical.

Other materials for making pyramids include: 1. wood products, 2. plastics, 3. glass products, 4. stone, and 5. cardboard. They all work if the form has integrity. Remember, the important requirements in adapting materials to the pyramid's construction are [A] accuracy and rigidity of form, durability, in some cases, lightweight for easy fabrication and handling and low cost shipment; [B] Allowing for maximum, free flow of pyramid energies. I subscribe to Verne Cameron's long held belief that pyramid panels are unnecessary. Coverings such as glass and plastic are opaque to, and actually disturb or shield out certain useful pyramid energies including: light, color, solar, lunar, and other powerful vibrations as well as negative ions, oxygen and other beneficial ingredients from the air. In the case of glass, Cameron long ago discovered that cone and pyramid rays reflect at the angle of incidence off glass, mirrors, certain ores, plastic and water, obviously creating major alterations in the higher force fields involved. We have a great deal more to learn about this phenomenon before we can be sure what happens to subject or specimen tested within a form, whether or not the pyramid is decorated with, or covered by reflecting materials. Bill Coy

SPIRALS IN SPACE... Andromeda, the great, galactic nebula casts its whorls of energy ever outward. Through dowsing and the techniques of geomancy, one can sense and feel the direction of these vortices where celestial and Earth's substrata gyrating emanations coalesce at precise energy meridians over our planet. [The Earth has its own acupuncture points.] Ideally, and on occasions a double helix [both clockwise and counter-clockwise movements] will occur. The tuning between space spirals and our sub-world energy fields spin their harmonics. This happens according to the right or left gyration of two or more galactic or other influential, rotating bodies in the heavens. The right or left gyration of a galaxy will be observed depending on one's telescopic point of view, seeing topside or the underside of a galaxy. For sure... where planting occurs at the center of these invisible power points — especially above a double helix, disease-free, vigorous trees and super-sized, verdant growth tower high above like vegetation nearby. See Andromeda Galaxy photo p.6.



MASTER HAMID BEY, OF THE COPTIC TEMPLE IN LOS ANGELES... who recently passed over in 1976, in his lifetime, developed a high degree of pranic breath control. In various public demonstrations Hamid Bey attained a remarkable state of suspended animation while sealed in an airtight box. After several hours the yogi apparently suffered no harm to his mental or physical apparatus. It is believed Hamid Bey, and other mystics achieving similar feats, using special physical and breathing techniques, were [are] able to store superabundant quantities of prana, the life force [vitality globules] in absence of normal oxygen supplies. The performance can be achieved with little expenditure of life energies by conserving the supply for hours, even for several days.

WHAMMOND'S VIEWS ON  
LEVITATION & ANTI-GRAVITY

In R.L. Dione's "Is God Supernatural" [Bantam Paperback], Bruce Palmer is credited with the discovery that "a spinning ball falls faster than a non-spinner: when projected upward a spinning ball rises faster also." I find no mention of this in Newton's Law of Gravity. What about partial levitation?

Dr. Charles Frederick Bush, back in 1925, reportedly found certain substances didn't fall according to Newton's Law of Gravity [i.e.: with constant acceleration of 32.2 H/sec<sup>2</sup>], in particular with a rock called "Linz-Basalt," some kind of partial levitation going on there also...

My theory says someone out in space would have more "Etheric Pressure" [what we call "Gravity"] acting down upon him than UP. So he'd be shoved DOWN [we call it a "Fall"! My theory says if you could keep the Ether AWAY from him he'd stay where he was and NOT fall!!! Intensive reading on the subject suggests there are three ways in which this can be done, vis: —

- [i] HIGH Pressure/Intensity [e.g. High Voltage, as T.T. Brown uses];
- [ii] HIGH Rotation Speed [i.e. "Centrifuge" the Ether out of him, as Bruce De Palma does];
- [iii] HIGH Frequency Vibration [to "Stand Off" the surrounding Ether and so "Decouple" the Body, or a Stone Block from it; so the Body/Block is in an empty bubble surrounded by Ether and so can be "Levitated" without being forced down by Etheric-Pressure].

Consider the most amazing discovery of Dr. T.T. Brown [formerly of Caltech U.] who discovered "etheric levitation" and anti-gravity: See T.T. Brown's original British patent #300,311 suppressed for half century [British Patent Office — H.M. Patent Office, London, England.] His most important U.S. Patent is 3,187,206.

...Regarding Mr. Francis Drake's discovery of using a "Maltese Cross" on a pyramid panel to intensify vibrations... this appears to be a form of Microwave Slot-Antenna.

Many types are used on military aircraft as radar communications aeriels — one type is spiral. Mr. Drake should try it.

Note how the Maltese cross sides are concave. The great Cheops pyramid also has concave base sides. Yessir!!!

Wm. Hammond  
Box 71-G.P.O.  
Montreal 101, P.Q. CANADA

SOMETHING NEW UNDER THE SUN!...

Where would you get all this for \$3 a year?

Family TRAVEL LOG

A Family, Nation-wide hobby, Pen Pals, Old Farm and Country tabloid newspaper.

Huntington House, 5406-14th Ave., Hwattsville, Md. 20782

THE NEW ATLANTIC JOURNAL... UFO NEWS AND VIEWS ON A WORLDWIDE SCOPE. INDEPTH REPORTING ON PARANORMAL EVENTS. WE INVESTIGATE THE UNKNOWN THE UNEXPLAINED AND THE UNEXPLORED. \$5.00 PER YEAR & \$6.00 FOREIGN. JOAN O'CONNELL, EDITOR. FOR SUBSCRIPTIONS WRITE TO: 4280-68TH AVE. NORTH, PINELLAS PARK, FLA. 33565.

Bill Cox,  
Blessing from the Grand Teton, Home of the Ascended Masters.  
Snow is falling in the high country. I am in a camp area right below the Grand Teton - the high mountains are rapidly becoming inaccessible by foot.

Bill, that fellow you talked about who has the floor of a room covered in blue flame - the more I read about the Masters the more I understand the use of cosmic flame for cleansing. The Sword of Archangel Michael is the Sword of the Blue Flame. The Cosmic Fire from Venus is the Action of Love that is transmuting, ascending action.

My inner being knows it would be right to bring that Cosmic Flame out. Will you consider working on that when I come down this winter?

The energy coming from the Master is of the electronic nature - just sitting here beginning this letter some energy was poured in. Gazing at the picture of the Presence what energy pours into the outer or physical.

Learn to Love Life...I Am That I Am. Jaya Ram

Greetings Bill,

Enclosed you will find some astounding new research as conducted by the "cosmically" oriented organization: WORLD FEDERATION OF SCIENCE AND ENGINEERING, mentioned in my previous letter. This information is exciting since it apparently represents the first successful application of cosmic-occult principles in practical technology. Since WF is a strictly non-profit group in accordance with New Age philosophy, they derive funds to support their research only through contributions from sympathetic individuals. A thought: perhaps an article about their marvellous work in the Guide would clue many more people in on this vital organization. THE LOOM OF CREATION has more than exceeded my expectations.

Part of this book is a report on a new type of electrical pulse photography (different from Kirlian "corona-discharge" photography), which, according to the researchers, has enabled photographs of the four ethers to be taken. This assertion is supported by elements of Rudolph Steiner's ether descriptions, which the authors repeatedly allude to. Many color and black and white prints representing results of this new research lavishly adorn this beautiful volume...

Speaking of Russell, I recently obtained some fascinating info. from WORLD FEDERATION (Cal.) who are apparently putting Russell's "Uphill energy flow" principle to practical electrical application (utilizing conical coil arrangements). This has restimulated my own investigations on polarizing gravity, the Searl Effect, UFO field, gyros. The conical electric coil is the key (may also relate to Cameron-Otis Carr studies). I sent some of this stuff to Arthur Matthews - restimulating his own interest in gravity; he's going to be doing some exptl. research on same come spring-summer.

I highly recommend to the serious researcher of gravity: USP-A Physics for Flying Saucers. Since this short document was removed from the market shortly after publication it is now available from the author at \$25.00 ppd! Yet the serious researcher of free energy will see its no rip-off - claimed to be telepathically received from extra-terrestrial intelligences, it contains practical scientific info. on vortex rings, true electrical nature of all motion (shades of Russell!), and description of how to utilize these principles to provide gravitational lift. I compiled a synopsis of this remarkable book and sent it to fellow researchers...

Did you manage to publish the Cameron cone research info; in light of the exciting new cone investigations taking place, this book should be quite enlightening...Don Reed, Wolcott, Conn.

Nov. 5, 1976

Dear Bill Cox,

...I enjoyed your lecture and workshop very much and I feel I should tell you about my experience with a simple paper pyramid I have had on my refrigerator since I started a period of fasting Oct. 20th. I had quite a lot of food in there and a pint of Half and Half, purchased on Oct. 15, dated for freshness Oct. 22nd. When I started eating again I found everything fresh and today the cream is still as fresh as the day I bought it. Really amazing! I am interested in the step pyramid which was built by my supposed Mentor, Imhotep. If you have any research on that I would like very much to read an article on it in a future Guide. Imhotep was a very important man in Egypt, a Dr. of Medicine, architect and political advisor to the Dynasty of his time. It seems he is still very active around you. Interesting, isn't it?

Good luck in your further evolution. I hope to see the slides that went by so fast, sometime again. Those designs and architecture looked so very fascinating. Best regards, Trudie Smith, Santa Barbara, Calif.

Dear Bill:

...At this time, you may be interested in hearing that we are building a 25' x 25' base 16' high pyramid greenhouse and are also conducting a number of small pyramid experiments. To date, we have had good results with improving the flavor of coffee, reducing the harshness of cigarette tobacco and mellowing wine. Much enjoyed reading the last two Pyramid Guide News Letters. Do you have any more information on people using pyramids to improve the running of their cars? Sincerely, Eric M. Roth, Willowdale, Ontario, Canada.

Dear Mr. Cox,

...I am currently working on a geometric theory which seemingly predicts a new force and its manifestation of a new energy. This new force may be the basic energy of psi phenomena and also the propulsive power of UFOs. The pyramid may be a focus of these energies much as a lodestar is a natural focus of magnetic force. I believe this force to be inherent in all matter in more or less strength. I also believe that there are other ways of focussing it. In the book "Handbook of Psi Discoveries" by Sheila Ostrander and Lynn Schroeder, there was information about dowsers detecting the energy flows of the pyramids. Science has had to admit that the wearing of copper bracelets does help arthritic patients although there is no known reason for anything happening... Bruce Jordan, Portland, Oregon.

Dear Bill,

Your article on Dr. Ray Brown and the Atlantic Crystal Ball was just fantastic -- really great. Keep up the good work. I also enjoyed very much the article on Gilbert Milne, Canadian, Amateur Horticulturist. However, there is one sentence in that article that I felt I just had to make comment on. Quote: "Healthier plants can be expected to attract more pests." It is really amazing to me that people working so closely with nature do not understand her laws. The law of nature is survival of the fittest. Bugs only attack unhealthy plants - they do not attack healthy plants. Organic gardeners have known this for many, many years. When the soil is built up using only natural fertilizers and compost, then it contains everything the plant needs to be healthy, and a healthy plant does not attract the bugs and pests which are nature's scavengers. I was delighted with his work using the Pyramid. Undoubtedly the Pyramid energy gives the plant the same energy as a good healthy soil does. This is just fantastic. At times I am awed that I live in this age when such marvellous truth and light are again being given to mankind. Thanks again for your exciting Newsletter. I look forward to every issue of Pyramid Guide...Love Life Light... Margaret Osborn, Hyrum, Utah

Dear Mr. Cox,

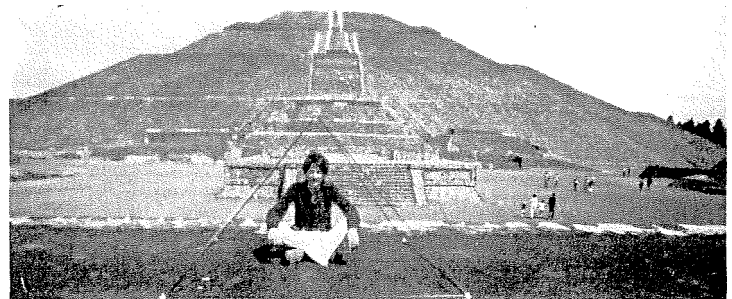
...In the meantime, I am most fortunate to be corresponding with a Dr. Charles F. Turley, Ph.D., a Magnetobiology and Bioengineering Research Specialist.

About a year ago I had occasion to work with him, long distance for he worked in Puerto Rico, on transmission experiments using rare earth permanent magnets. The experiments had to be discontinued before we could get feedback, and eventually we lost contact while he was in the process of relocating. Would you believe he read my letter to you and your reply in a copy of Pyramid Guide, realized we are not too distant from one another now, Ohio, and we do have a mutual group to work through and with.

He is probably as well versed and knowledgeable in both pyramid energies and orgone energies as any scientist could be. He is involved in  $\Delta$  orgone construction. Small world! Forgot to mention that he is now residing in Cincinnati, Ohio, not too far from Mansfield...Thank you again for your replies to my letters. Sincerely, Lillian Brown, Mansfield, Ohio.

Dear Bill,

So far I made two pyramids out of cardboard: 10" & 12" The 10" model is covered with aluminum foil. I placed them on top of my television set and one day while looking up from the screen I noticed something like an aura along the edges of the pyramids. This is readily visible with a dark background, in bright daylight or with electric lights I don't see the aura. Is this a normal thing to see? Have others also observed it? Where is the focal point in the pyramid. Should an object be lifted up from base level and placed higher inside the pyramid replica? Steve Matczak, Penns Grove, New Jersey.



FOCUS ON "NICK"...IN PYRAMID MODEL BEFORE THE MOTHER FORM OUTSIDE MEXICO CITY. NICK EDWARDS of California's Pyramid Energy Environmental Systems sought correlations with ancient pyramids and smaller replicas during his recent expedition to Mexico. Does the monolithic structure intensify and broadcast its energies according to laws of mass and size, beyond miniaturized versions? Were the Mexican pyramids strategically placed at precise locations involving cosmoplanetary forces? Are we rediscovering the secrets of the ages? Nick believes so, and may have more to say on this in a future issue.

Biblical texts and the historical accounts of saints and the illumined are replete with appearances of the Virgin, angels and Divine beings. Recall these Marian apparitions: Our Lady of Guadalupe seen by the Indian, Juan Diego in Mexico in 1531. In addition, the Fatima, Portugal appearances in 1916-17; some startling Beauraing, Belgium Virgin spectres 1932-33; the Syracuse and Garabandel, Spain apparitions in 1953 and 1961 respectively; and the Zeitoun (Cairo), Egypt visions April 1968. Bishop Gregory, the missionary wonderworker, circa A.D. 213-270, reportedly saw the Virgin. And from the records of the Page Research Library since the 1800's: Paris 1830 and 1836, Blangy 1840, La Salette 1846, Rome 1854, Lourdes 1858, Pontmain 1871, Pellevosin 1876, Knock 1897, Portugal 1946. Then Our Lady returned to England at Walsingham in 1945, Stockport 1947, and again at Aylesford in 1951.

How can science or the church explain the phenomenon of selective visibility and sound where many of the foregoing apparitions have occurred? In specific instances, one or more witnesses to the religious phasma readily record the incident through some kind of higher sight apparently outside the range of ordinary vision, and at times, the audible perception of onlookers.

At Beauraing, Belgium, some people in the crowd saw sparks emanating from a fireball, others saw nothing. All subjects contacted by the Virgin or angel may or may not perceive exactly the same form(s) or message. One or more persons for unknown reasons have been excluded from cognizing all or part of the diaphanous, moving event.

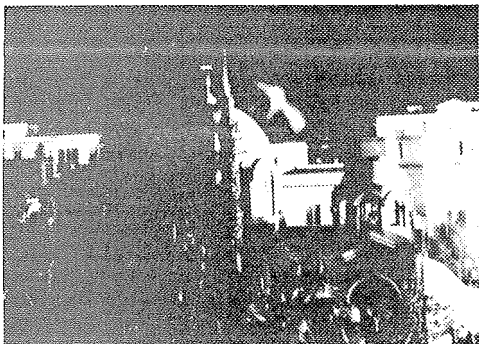
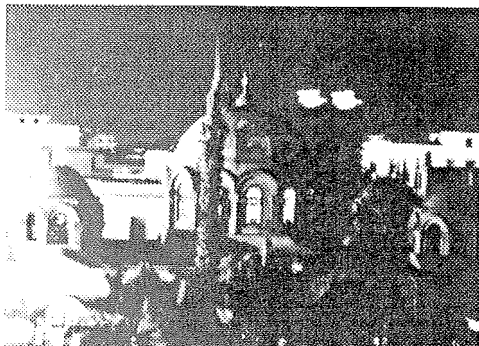
Demonstrations of partial levitation have occurred and in some instances, the bodies of various subjects have remained free of corruption long after death. The camera has captured what some spectators couldn't see, again proving witnesses weren't hallucinating or pretending.

When the person so contacted enters an ecstatic, higher vibratory state their visual and auditory range apparently opens well beyond that of the average person. As expected, this causes great doubt among church and public officials charged with the responsibility of validating the appearances.

Clairvoyant and clairaudient awareness coincides with these visions. Apparitions don't necessarily establish a charmed space. Bystanders alongside, even touching the actual witnesses are frequently excluded from viewing or hearing the heavenly manifestations, further proof that in our present evolution, we may be occasionally stimulated to bridge physical and pre-physical realms, seeing the unseen and hearing the unheard.

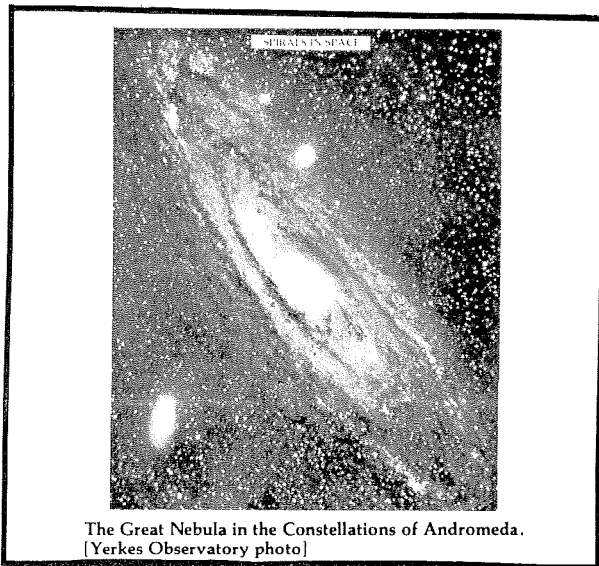


**ELIJAH FED BY AN ANGEL...** And he lay down and slept under a juniper tree; and, behold, an angel touched him, and said unto him, Arise and eat. And he looked, and, behold, there was at his head a cake baken on the coals, and a cruse of water. And he did eat and drink, and laid him down again.  
I. Kings xix, 5-6



For a remarkable narrative and pictorial account of the Zeitoun visions and detailed UFO and psychic phenomena information, write to Page Research Library, 6707 Colgate Avenue, Cleveland, Ohio 44102.

Reference the apparitions of Garabandel, San Miguel Publishing Co., P.O. Box 4468, Detroit, Mich. 48228.



The Great Nebula in the Constellations of Andromeda. [Yerkes Observatory photo]

**ECSTASY AT GARABANDEL...** In North Central Spain, beginning June 18, 1961, and in the months following, Loli Mazon [L Top] and Conchita Gonzales [Below], beheld several visions including an angel and the Virgin Mother. The voices of the apparitions were usually audible to the two girls and their companions, Jacinta Gonzales and Maria Cruz Gonzales, but the spectres were not seen or heard by the crowd looking on. By contrast the Zeitoun [Cairo] Egypt apparitions were seen and photographed by spectators, ably demonstrating the various ways religious apparitions manifest. Sometimes the appearance is an extremely personal event, with the percipient serving as messenger. Where crowds participate, the messages are usually similar: love, prophecy, admonition and warning of impending planetary upheaval as the world's populations move further away from [spirit] grace.

Extreme left upper photo...CLOSE-UP VIEW OF BIRDLIKE CREATURES in flight near the church in Zeitoun [Cairo] Egypt. The light form being appeared and disappeared without explanation. At times they seemed to fly in the formation of a cross.

Middle left photo...TAKEN BY RIZK MATTA, May 8, 1968. Similar semi-materialization as these light energy beings changed form and color.

Extreme lower left photo...THE MAJOR APPARITION IS IN PROCESS OF TAKING SHAPE. Mr. Matta, experienced a miraculous cure in the same moment his camera captured the apparition on film.

# complete copper pyramid

Pyramid shown  
is 6' base



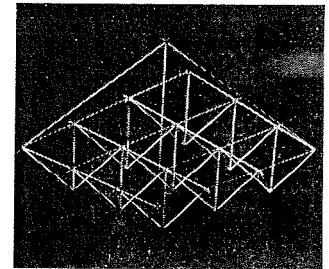
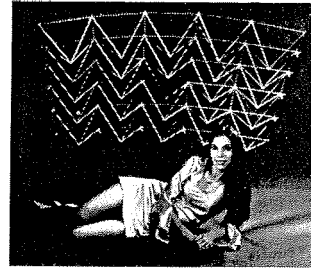
Enclose a money order for: \$107 (includes postage for non-res. of Ca.) or \$113 (includes tax and postage for Ca. res.)

The Pyramid Guide, P.O. Box 30305, Santa Barbara, CA 93105

Copper cadeusus-wound, Pyramid Hat... open frame style. Also Copper cadeusus-wound ANKH, (an electric metal) in combination with CARBON ROD (a magnetic material). All available for experimental use only. NEO PYRA TECHNIC PRODUCTS, a division of Blue Rose Ministry, P.O. Box 622, Joshua Tree, Cal. 92252.

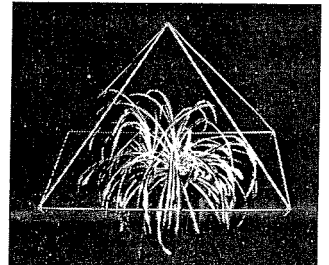
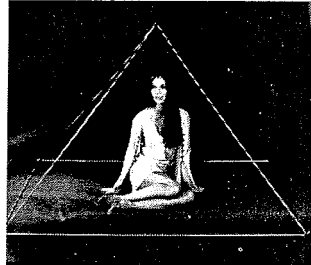
# Pyramids you can live with...

Introducing a new line of pre-energized Pyramid Products designed to keep you running.



## PYRAMID MATRIX SLEEP SYSTEMS

Enjoy the experience of sleeping under the most advanced system ever created. Our matrix technology works like a giant lens to focus the energy fields for new highs in sex, meditation, dreams, psychic powers and well being.



## 75 INCH MEDITATION PYRAMID

Now you can enjoy meditation and relaxation even more in a pyramid environment that's portable, light and convenient. Use it at home or take it wherever you go. It's portable.

## 10 INCH PYRAMID GENERATOR

A special platform comes with pyramid generators to place objects on top for faster results. Breaks down easily and comes in bright red, blue, orange and the standard silver.

I want to join the Great Experiment... Please rush me my pyramid.

Nick Edwards Environmental Systems, Inc. Circle color: red orange  
7650 Haskell Avenue blue silver  
Van Nuys, California 91406

I would like you to send me a(n) \_\_\_\_\_ I have enclosed \_\_\_\_\_

Nick Edwards Environmental Systems, Inc. will pay for all postage and handling charges. California residents please add 6% sales tax.

Name \_\_\_\_\_

Address \_\_\_\_\_

City \_\_\_\_\_ State \_\_\_\_\_ Zip \_\_\_\_\_

All pyramid antenna generators come with a money back guarantee.

## THE MUSIC OF CHEOPS by STEVE DOUGLAS

[See Pyramid Guide Edition Page 6, #24, July-August 1976] An extraordinary album from the heart of the Great Pyramid Cheops, \$6.98. By special arrangement with the Egyptian Government, Side II. The Sphinx. 1. Time Capsule 2. Meditations at Luxor 3. Journey from Atlantis 4. Ascent. For additional information write Cheops P.G. Records, 1420 N. Beachwood Drive, Hollywood, CA 90028.

**DIYAMID ARTS**

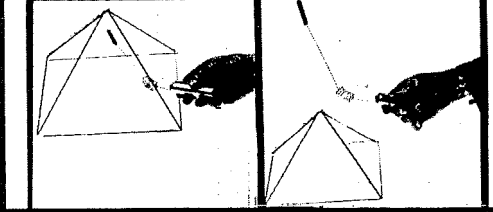
Full Color Airbrushed Poster, 18x24, suitable for framing. A beautiful addition for any room. \$2.95 PPD.

Pyramids by Moskos. 5 ft. and 8 ft. base clear redwood; finely craftd. \$63.00 C.O.D.

**DIYAMID ARTS**  
810 N. HWY. 101  
LEUCADIA, CA. 92024

**DOWSING HANDBOOKS, MAP DOWSING and OIL LOCATING.** Cameron and Cox at \$2.75 each, a unique, functional Dowsing approach at a distance. **AQUAVIDEO**, Locating Underground Water, in soft cover, Cameron and Cox at \$6.95. One of the most comprehensive, step-by-step, fully illustrated Dowsing methods ever written. Order above from El Cariso Publications, P.O. Box 30305, Santa Barbara, CA 93105

**THE ORIGINAL CAMERON AURAMETER...** world's most sensitive Dowsing instrument... twenty years in its development, and an effective experimental Dowsing device. The AURAMETER is lifetime guaranteed against defects, workmanship assured... Over 4,500 in use throughout the world today. The AURAMETER is a combination Water Compass, Weighing Device and Upright Pendulum. El Cariso Publications, sole manufacturer — \$49.50 postage paid. Write for free descriptive brochure, c/o Pyramid Guide.



**THE REVOLUTIONARY BIOLOGICAL POWER** behind UFOs revealed and explained in "THE COSMIC PULSE OF LIFE" by TREVOR JAMES CONSTABLE. UFOs, Pyramid and Dowsing Mysteries rooted in basic etherian physics. 436 page 5-1/4 x 8-1/4 pbk. \$5.95 + 50c handling + CA. tax: Foreign \$6.95 U.S. Funds: or send for brochure.

MERLIN PRESS, P.O. Box 12159, Santa Ana, CA 92712

Please Note: The Pyramid Guide, El Cariso Publications, the owner and Editorial Staff, does not accept responsibility for statements made on the quality of product or service offered by advertisers.

**REVOLUTIONARY new electronics motor.** 100 horsepower, 24V power source. "Digital-pulsed" and time-phased-programmed. Motor Block diagram and test data included. 550 mile range, prototype test, electric car. Information, \$3.50. Wendel L. Daniels, Engineering consultant, 8450 Anthony Wayne Avenue, Cincinnati, OH 45216.

**\*\*\*\*\***  
**PYRAMIDODOLOGY**  
For a listing of over 25 Pyramid Related Books and more than 30 Pyramid Products please send 2 stamps to:  
PYRAMIDS  
8143 - PG Big Bend  
St. Louis, Mo. 63119  
**\*\*\*\*\***

Watch For...Pyramids of the Orient In the next issue of The Pyramid Guide....

**MAGIC MIRROR!**  
See subconscious Inner Planes!  
Write: I.P.C.  
P.O. Box 2927-EA  
Hollywood, Ca. 90028

**PAGE RESEARCH LIBRARY**... One of the country's most amazing variety of unusual books: Hollow Earth, UFO, Fortean Phenomena, Bigfoot, Occult Americana, and a whole plethora of the supra-normal. NEWSLETTER, four issues \$1.00, and catalog information. Write: 6707 Colgate Ave., Cleveland, Ohio 44102.

**WANTED DISTRIBUTORS**  
United States & Canada. The Newest Pyramid Product. Pi Phi Pyramid Inc., Box 1037, Downsview Stn. "B", Downsview, Ontario. M3H 5V5

**FOR LEASE, 6 mo. to 1 yr.** 40'x40' Base Pyramid Temple, 750' Elevation, on 40 acres, overlooking sea and whitewater beach 1 mile away. Available to responsible individual, group or groups who will enhance the Center's high vibrations. Located 2 miles north of Jenner, Calif. and 2 hrs. drive north of San Francisco. For information write c/o Thelma, 2655 Edison St. #103, San Mateo, Calif. 94403 or Phone 415-341-9363.

finest spiritual and scientific information in the psychic field.

**THE Psychic Observer** and CHIMES  
SUBSCRIPTION FORM  
E/S/P/ress, Inc.  
One year (12 issues) \$7.50  
Canadian and Foreign Subscriptions \$9.50

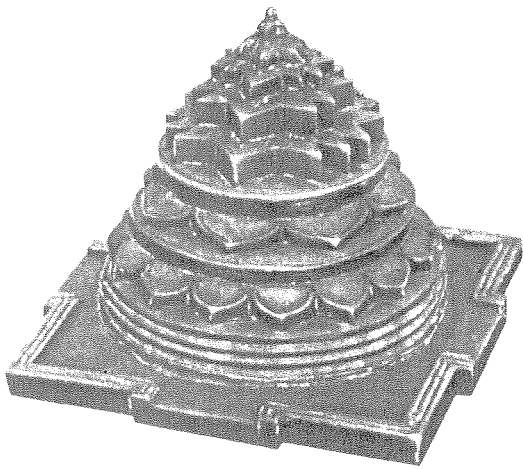
CHECK PAYABLE TO *Psychic Observer*  
Box 8606, Washington, D. C. 20011

**THREE QUESTIONS ANSWERED...** up to 600 words by mail. Old-time, proven European system, handed down, one-to-one, through long family lineage; now offered by Lillian St. John, formerly of London, England.

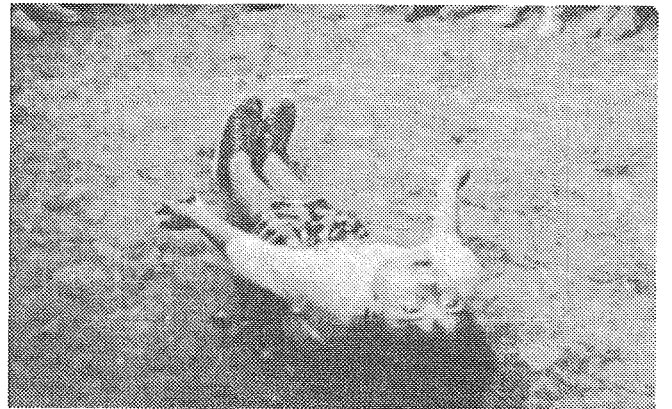
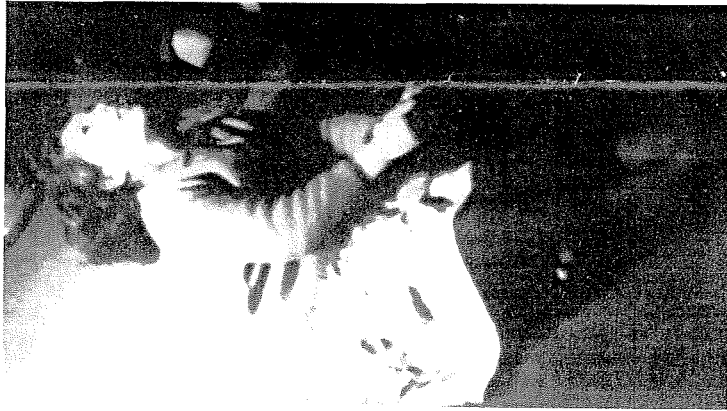
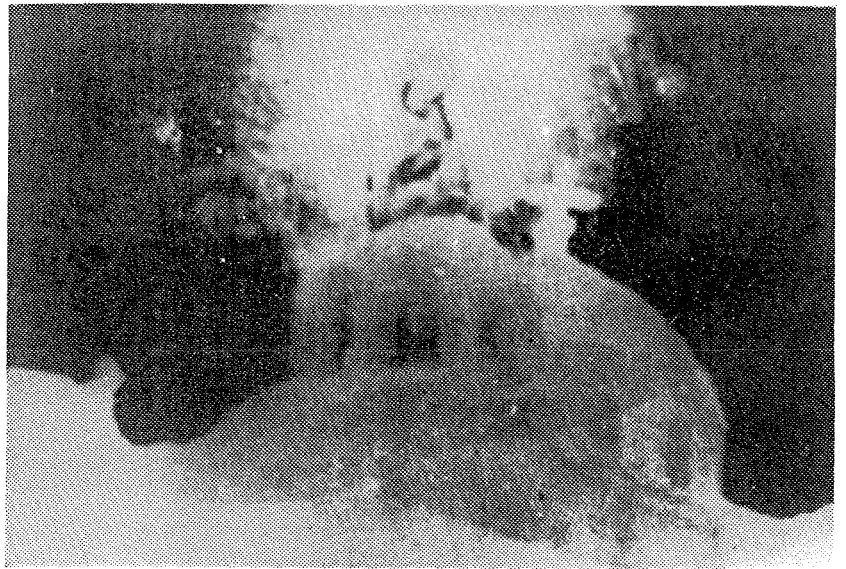
1) Just shuffle an ordinary deck of 52 playing cards; 2) from left to right, in horizontal fashion, lay out nine cards in a row, 36 cards in all which will result in four horizontal rows of nine cards each; 3) set aside the remaining 16 cards as they will not be needed; 4) WRITE DOWN, left to right, AS THE CARDS APPEAR, suit and number of numbered cards and/or suit and description of each ace or face card: all cards AS THEY APPEAR in sequence by row; 5) use symbols as follows: "H" for hearts, "D" diamonds, "C" clubs, "S" for spades; and include birthdate.

For prompt reply, send \$15 to Lillian St. John, P.O. Box 4353, Santa Barbara, Calif. 93103.

**"PYRAMID OF LIGHT"**—A Manea Arts Original, the perfect gift for everyone, scientist and artist alike. The "PYRAMID OF LIGHT" is made of the finest mirror & glass for your ultimate use & enjoyment. Order from MANEA ARTS, 1018 S. Pacific Coast Hwy, Redondo Beach, Ca. 90277. Six inch base—\$7.50; 9"—\$14.50; 12"—\$21.50. Add \$1 for handling and insur. Instruction & Legend included.



SAKRAS, PYRAMID TERRACE OF LOTUS, STARS AND DISKS. The rounded Bindu, Cosmic Seed of the Universe caps the far east object, replacing peaked capstone or truncated platform so commonly found crowning Egyptian, Mexican and South American pyramids.



Upper Right...SPECTACULAR PHOTO OF THE ZEITOUN, EGYPT, MARIAN APPARITION, with the Holy Mother holding the infant in her arms. A luminescent cloud of incense and flying doves surrounds the Virgin and Child.

Left...THE BODIES OF LOLI MAZON, and CONCHITA GONZALES, [Right]...of Garabandel, Spain, are in formal levitation during one of their visions. On another occasion the children in elevated states of consciousness walked backwards through the cobblestones of a dry creek bed, seemingly weightless and without stumbling.

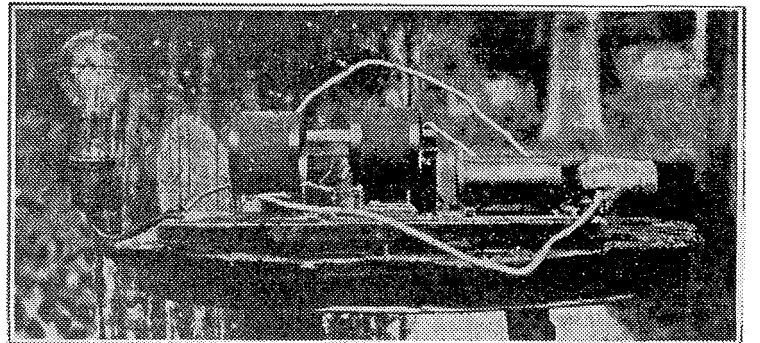
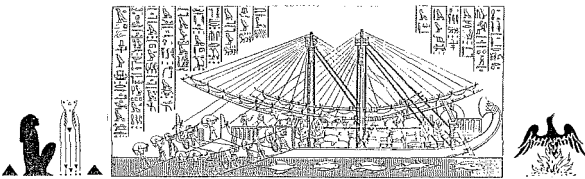


Illustration above shows the Moray Radiant Energy Device when it would light a 100-watt globe.



SHIP OF HATASU LADEN WITH PRODUCE FROM PUN-T.

EL CARISO PUBLICATIONS,  
P. O. Box 30305  
Santa Barbara, Calif.  
93105

FIRST CLASS MAIL

