

the PYRAMID

Guide

International Bi-Monthly Newsletter

Single Copy \$1.00 Yearly Pre-Paid \$6.00

Foreign \$7.00 Foreign Airmail \$10.00

May-June 1976

Vol. IV, No. 5

No. 23



RIO'S TOMB-SPHINX . . . Mario Amaral, one of Brazil's leading parapsychologists stands in twilight silhouette before the legendary Gavea Stone. Dr. Amaral is president of a school of learning dealing with life's mysteries in Rio de Janeiro, and is a frequent visitor to the towering rock chamber.

SIGHTS AND SOUNDS FROM THE GREAT GAVEA STONE

Mr. Bill Cox, Editor
The Pyramid Guide

Dear Bill,

I have arranged for Potiguara Novazzi, writer for *La Planeta*, Brazil's leading magazine on paranormal phenomena, to give you a copy of his cassette tape recording of heartbeat-like thumps emanating from the Gavea Stone. I believe your readers will be fascinated by this story-legend. Let me know if you need any more information.

Sincerely,
Mauro Pinheiro
Psychotronic International
Rosemead, California

Yes. I have a cassette copy of Potiguara's tape. So far, the thumping sounds register each time I try a playback. I hope they don't distort or erase, as they occasionally do on other tapes. Let me express my heartfelt thanks to you, Mauro, and Potiguara, for bringing me to, and through the mysteries of the Gavea phenomenon to be shared with Pyramid Guide readers. Yours truly, B.C.

The Gavea Stone has a long history of enigma and intrigue. Visitors to the crown of this mountain above Rio have from time to time, seen and heard strange sights and sounds. A few have claimed physical entry through one of the three known portals. Others who say they have astral travelled into the Gavea's inner sanctum find their experiences parallel. They generally agree, a large main chamber exists in the center of the great stone. From their point of view, two solid gold coffins contain dazzling, white wrapped mummies. They refer to them as the two brothers: the sacred twins, there resting in a deep sleep perhaps awaiting some significant event. Phoenician inscriptions adorn the main chamber. In the smaller, and adjoining room a very large goblet can be seen: It is believed to be the origin of the booming sounds emitting from the interior.

Occasionally, when least expected, one of the three portals mysteriously opens, an aperture only triggered by some astrological or cosmological moment upon signal from some intelligence controlling the Gavea Stone. All efforts to enter one of the three rock sealed doorways have inevitably ended in failure. All manner of techniques have been employed to pry or blast the *Lapa Portal* at the rear end of the sphinx-tomb: Stone wedged barriers will not budge one fraction. Yet, witnesses have reported seeing the *Lapa Portal*—the most easily seen and accessible passageway of the three entrances—standing wide open. After running down the mountainside to relate what they saw they found to their dismay upon returning with authorities that the entrance casements were again sealed as before.

Unconfirmed stories state no one has physically returned to the outside world once they entered the Gavea Stone. Who knows what horrors or delights await the unwary explorer? But two hikers camping near the *Lapa Portal* found it open one night and supposedly ventured far enough inside to see the large chamber. They too, ran down the mountain to share their find which again couldn't be proven by the sealed portal upon return. Brazilian archeologist, Durival Barrios, believed the *Lapa Portal* will never be opened by conventional means.

The tail of the sphinx at some time in the dim past broke off and tumbled downhill. Today it can be observed as a huge boulder lying in the forest incline below.

Continued on page 6

CHINA'S GREAT CRYSTAL-CAPPED PYRAMID

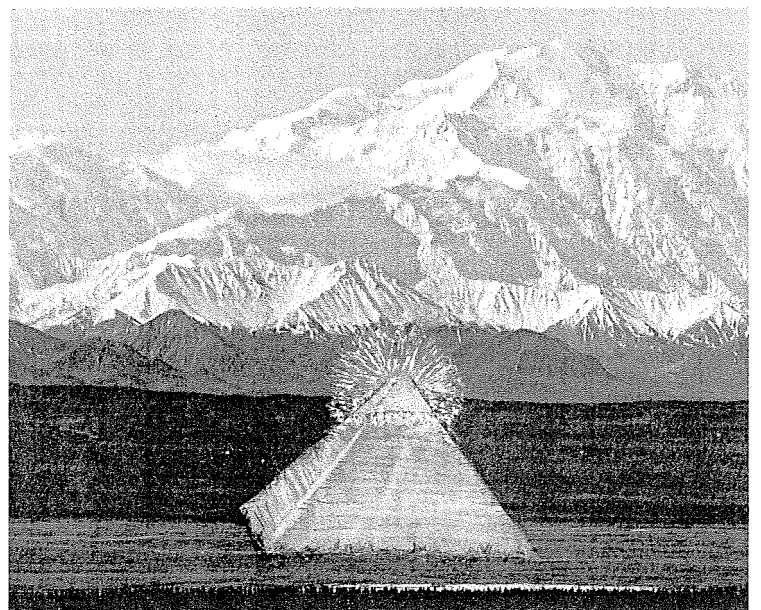
Occidental travellers in 1912, and again in the 1930s encountered central China's spectacular Shensi giants, seven earthen pyramids of enormous size lying along a seven mile plain, some three days horseback ride west of Sian-Fu.

Detailed research reveals the astounding Shensi mounds may be separate from, and junior to an even greater marvel, an awesome crystal-capped, alabaster or limestone-cased pyramid, observed by a U.S. Airforce pilot in 1942. It now appears this greater, and little known structure of highly polished exterior, or another resembling it will be rediscovered, not in Shensi Province, but much further south in the mountainous sector of Hupei Province, China. Despite airforce pilot, James Gaussman's reported sighting of a glittering, geometric albino in the Shensi region, conflicting statements or misstatements have surfaced upon cursory investigation.

Gaussman regularly flew a cargo plane from and to India's Assam airfield, over the "hump" (Deadman's Alley), into China during World War II. On one of his return missions, Gaussman's plane developed engine trouble above the high Himalayan mountains. The loss of power forced the young pilot to maneuver his craft down through the dangerous mountain range into lower elevations. Enroute, Gaussman came into a hidden valley, there observing one of this planet's greatest man-made spectacles. One article described the pilot's find as a three-sided (tetrahedron) pyramid. This statement doesn't coincide with the Shensi pyramids which must be four-sided, if observations by witnesses are correct.

Fred Meyer Schroder with his partner Oscar Maman, Chinese-Mongolian traders in 1912, and soldier of fortune, Frank Stephens, again in the 1930s concur the largest of the Shensi pyramid complex was found to be generally without stone casing, all seeing only traces of casing blocks around the base of the mammoth structure. They noted each of the four sides had been painted; mixed with, or stained in the colors, black, red, green and white. They also saw yellow soil or hues impregnated in the pyramid's truncated, apex floor. Though there was disagreement of how

Continued on page 6



APPARITIONS . . . HOLOGRAPHIC STRUCTURES IN THE SKY?

How can we explain and agree upon the cause, effect and meaning of those most extraordinary appearances of apparitions, ghosts, spiritforms and other nebulous phenomena? Ancient manuscripts and even contemporary history are replete with the sudden appearances, or visions of angels or god-like beings. The celestial visitor may often convey certain vocal messages to a chosen one. Prophecies have occasionally followed in the name of the contactee. At other times, the visions remain quite silent and hover for prolonged periods before fading into oblivion.

If we admit to the possibility of space visitors with technology and metaphysical skills far in advance of our own, three dimensional photography, holographic images created in mid-air can be the origin of apparitions. We can already view 3-dimensional images formed through ultrasonic means—a remarkable interchange between light and sound. Experiments now in progress also prove the human voice can be projected along a beam of concentrated laser light. With motion holography, we also have the potential for moving, speaking constructs in space.

Apparitions seen in our atmosphere, along with other ghostly phenomena, including nature spirits, etc. . . may be holographic images created by masters, benevolent, higher intelligences from space or other dimensions. It seems their primary purpose is humanitarian and religious in nature and follows a certain pattern; for example:

Consider the July 1917, Fatima apparitions in Portugal. The appearance of heavenly beings as a force, possibly created to balance the negative, war-like consciousness permeating Europe before the close of World War I.

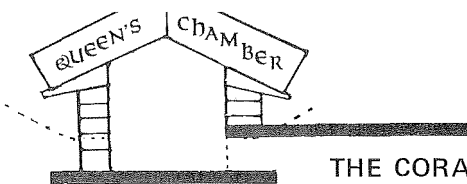
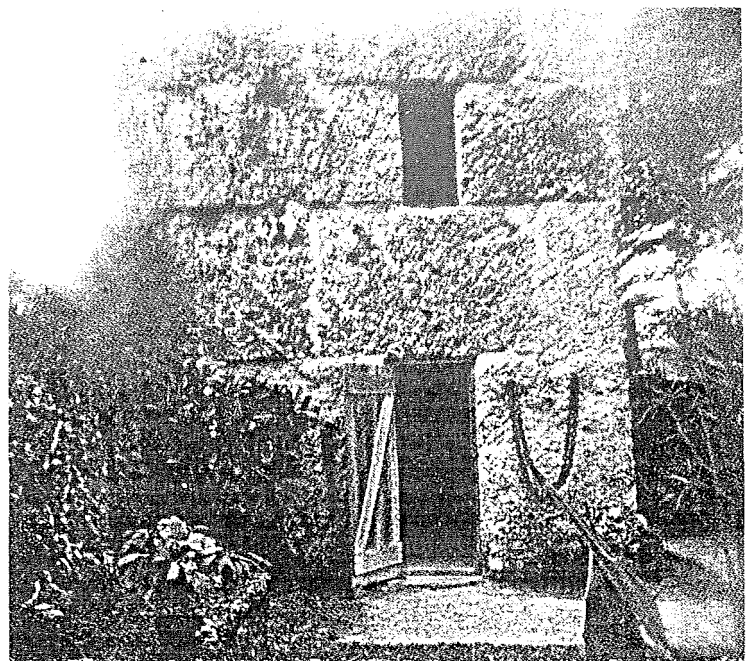
Note the sensational April, 1968, Zeitoun, (near Cairo) Egypt, apparitions. Warnings appear about man's hostility and greed, and insensitivity toward nature, earth and planetary life. The Zeitoun apparitions manifested in the hostile regions of Egypt and the Holy Land. Cogitate on the astonishing apparitions over Korea a few years ago. Those who subscribe to this compassionate balancing of negative energies point out that the religious apparitions there contributed toward shortening the war of attrition in Korea at that time.

Some of the prophecies made after the Fatima sightings have been exceedingly accurate, with some yet to unfold.

Holographs are created with coherent light, waves running in parallel, as opposed to incoherent light emanating from incandescence, gas and flamelight. The 3-dimensional image also changes with the moving perspective of the observer. One can walk around the hologram and view it as a 3-dimensional object. Present laser holograms can attain several feet in size in each dimension.

From another point of focus, the photographic image produced by holography is nothing more than a thoughtform, frozen in time. If it is a kinetic hologram, then it is a thoughtform moving in space. The question is: Whose thoughtform? Our holographic science may now be catching up. But to what? Maybe some UFOs are holograms. Now you see them. Now you don't.

—Bill Cox



THE CORAL CASTLE
By Marianne Zezelic

Twenty-five miles south of Miami, Florida, on U.S. Highway No. 1 looms a castle made entirely out of coral rock. This massive structure was constructed, not with the help of many hands or modern machinery, but by one man working alone. Edward Leedskalnin, a Latvian immigrant, designed and built Coral Castle as a tribute to a lost love.

Working with handmade tools consisting of a lathe and a rope hoist, this man of 120 pounds hoisted rocks weighing up to thirty tons. Some were heavier than the stone blocks used in the Great Pyramid of Egypt. All blocks were perfectly fitted into place, and when Leedskalnin was asked how he accomplished this unbelievable feat, he stated, "I have learned the secret of the pyramids. I understand the principle of weight and levers." The answer revealed little, so Leedskalnin later passed away taking his secret with him.

Altogether there are approximately 1,000 tons of coral rock used in the construction of the castle walls and tower, and over 100 tons carved into tables, rocking chairs and fountains that adorn the castle grounds. One piece in particular, an obelisk, stands forty feet high and weighs thirty tons. It has been chopped out of the rock in one slab and lifted into position. Nearby stands a tower twenty-five feet high and weighing twenty tons. At the top a circle was carved out of the rock and fitted with a primitive cross and hairsight. The sight lines up with a similar aperture in the main wall below. This in essence is a primitive telescope. At night, the north star appears in the sights. By observing the star's daily movements over a long period of time, Leedskalnin was able to accurately calculate the earth's path through the galaxy. He carved the pattern in the rock wall next to the telescope and from his deductions devised and sculpted the enormous sundial, the only instrument of its kind in the world.

Inscribed on the bowl-shaped sundial is an intricate system of loops. Placed above the bowl is a piece of metal which casts the Sun's shadow on the loops. Each part of every loop represents a certain time, so that by reading the shadows as they fall upon the loops, one is able to tell the exact time of the day within seconds. One can also determine the seasons from the shadows, for on the shortest day of the year, December 21st, the shadow falls precisely at the apex of the loops. On the longest day of the year, June 21st, the shadow falls exactly on the nadir.

All this was created by a man with little schooling. Working alone in the dead of night, Leedskalnin hacked away at the rock with an axe and hammer made out of discarded parts from old Model "T" Fords. Still people questioned as to how he built his castle. Some said he used black magic, or visiting observers claimed he had come by spaceship from another planet and had the powers unknown to this world. Still others figured Leedskalnin did it all with levitation. Some believed he possessed the knowledge of anti-gravity and was able to harness magnetic fields, thereby eliminating weight from any object.

Leedskalnin wrote tracts about magnetism and its relationship to the animal, vegetable and mineral kingdoms—claiming it to be the Cosmic Force and the basis for all life. In his writings he proposed that matter is constructed of minute magnets of north and south poles, and neutral particles of matter, and not of protons and electrons as taught by contemporary physics. He also hinted that gravity can be negated through the manipulation of magnetism, as all objects can be rendered weightless by controlling the magnetism running through it.

Unfortunately, we are not given specifics as to how this can be accomplished, so we must ponder still the mechanisms used in creating Leedskalnin's Coral Castle.



THE PYRAMID GUIDE

An international bi-monthly newsletter issued Jan., March, May, July, Sept., and Nov. Annual Subscription rate \$6.00. Canada and Mexico, \$7.00 annual rate (airmail \$3.00 extra). All other foreign \$10.00 (by air mail only). Edited and published by Bill Cox of EL CARISO PUBLICATIONS, P.O. Box 30305, Santa Barbara CA 93105, Phone (805) 965-0502.

Opinions expressed by contributing writers do not necessarily reflect those of the editorial staff and publisher of the Pyramid Guide and El Cariso Publications.

Copyright © 1976 by El Cariso Publications, printed in the United States of America. All rights reserved. No part of this letter may be used or reproduced without written permission of El Cariso Publications.



ROBERT OLSON, OF SAN DIEGO, CALIF. WANTS TO KNOW WHAT CHANGES TAKE PLACE IN WATER PLACED IN A PYRAMID. "HAS ANYONE MADE A CHEMICAL OR ELECTRONIC ANALYSIS TO FIND OUT WHY THE WATER IS BENEFICIAL TO ORGANISMS? HE ASKS, "AND YET IT APPEARS TO DRAW ANY REMAINING LIFE FORCE FROM CERTAIN FLOWERS-- AND ALWAYS FROM FRUIT...I'M USING PYRAMID WATER WITH FRUIT IN PRACTICAL WAYS IN MY BUSINESS," HE ADDS. "FRUIT WATER DOESN'T SEEM TO SOUR OR DETERIORATE IN ANY WAY; EVEN AFTER MONTHS PASS BY."

PRELIMINARY REPORTS SHOW A MOLECULAR CHANGE MAY BE TAKING PLACE AFTER A FEW MOMENTS CHARGE. WATER PURIFICATION MAY BE ANOTHER DISTINCT POSSIBILITY. FISH TANKS ARE A GOOD EXAMPLE. OTHER READERS CLAIM THE TASTE OF WATER IS MUCH IMPROVED AFTER A FEW MINUTES CHARGE UNDER A PYRAMID REPLICIA.

MR. OLSON, ALSO ASKS: "CAN THE PYRAMID SHAPE BE PATENTED?"

THE FORM CANNOT BE PATENTED, BUT A NEW METHOD FOR ASSEMBLING THE FORM, SUCH AS, CORNER CONNECTORS, CERTAIN TYPES OF DESIGN AND ASSEMBLY WILL BE CONSIDERED BY THE U.S. PATENT OFFICE.

MICHAEL KELLEY, OF 8143 BIG BEND BLVD. WEBSTER GROVES, MO. 63119, SAYS: "I'M STARTING A PROJECT WITH A FREE ENERGY SPECIALIST IN FLORIDA, AND AN ARCHITECT IN WASHINGTON, D.C. WE'RE GOING TO DESIGN A COMPLETELY SELF SUFFICIENT PYRAMID HOUSE ENVIRONMENT-- ONE VERY MUCH IN HARMONY WITH NATURE. A GREENHOUSE WILL BE BUILT INTO THE STRUCTURE. WOULD YOU ASK PYRAMID GUIDE READERS WHO ACTUALLY LIVE IN CHEOPS PYRAMID HOUSES, OR THOSE THAT HAVE PYRAMID GREENHOUSES TO WRITE TO ME ABOUT THEIR EXPERIENCES. I'LL COMPILIE IT ALL AND REPORT THE RESULTS."

WRITE TO JOHN TODD, DIRECTOR, THE NEW ALCHEMY INSTITUTE, FALMOUTH, MASS. WHO IS EXPERIMENTING WITH NOVEL FISH AND CROP GROWING METHODS IN GEODESIC DOMES; WITH OTHER FARMING PROJECTS IN COSTA RICA, SAN DIEGO, CALIF. AND ON PRINCE EDWARD ISLAND IN CANADA. ALSO, YOU MAY REFER TO LES BROWN, OF BANCROFT, ONT. CANADA. (SEE REFERENCE TO HIS GREENHOUSE PROJECT IN THIS ISSUE OF PYRAMID GUIDE

JONATHAN KROWN, OF MILL VALLEY, CALIF. AND CO-DIRECTOR OF THE BIOTONICS INSTITUTE SUGGESTS: "THE BEST WAY TO UP THE MAGNITUDE OF A PYRAMID IS TO RUN AN ELECTRICAL CURRENT THROUGH ITS STRUTS, BUT MUST BE DONE WITH LOW VOLTAGE AND AMPERAGE, AND WITH CAUTION. I BELIEVE THE FULL MOON WILL ALSO PRODUCE ADDITIONAL ENERGY POTENTIAL,"HE ADDS.

ELMER D. ROBINSON, OF WHEATON, MD. OFFERS: "I HAVE BEEN WORKING ON A GEOMETRICAL MODEL OF THE GREAT PYRAMID OF GIZA TO 10 PLACE ACCURACY, AND FIND: 1. THE BASEWIDTH AND SLANT HEIGHT DO RELATE TO THE LENGTH OF A MINUTE OF ARC AT THE EQUATOR WITH FANTASTIC ACCURACY. 2. THE DESIGN IS BY THE Ø-PHILOSOPHY, AND NOT BY THE DESIGN OF THE PHILOSOPHY. 3. THE BASIC UNIT OF THE BUILDER'S MEASURE IS ½ THE TUNNEL'S WIDTH. 4. THE ROUNDING OFF OF NUMBERS HAS CAUSED MUCH MISUNDERSTANDING AND FALSE CONCLUSIONS.

INVENTIONS

FROM HOGIE MC MURTRIE, OF LOS ANGELES, CALIF: "AM DEEPLY INVOLVED WITH GREAT PYRAMID RESEARCH, SO DEEP IN FACT, I'M CAUGHT INSIDE THE GRAND GALLERY AND CAN'T FIND THE LINTEL IN THE DARK. MAYBE CORRESPONDENCE WITH NOTE COMPARISONS MIGHT SOLVE THIS PROBLEM. I JUST DESIGNED A QUADRAPHONIC HI-FI SPEAKER MONITOR SYSTEM BASED ON AN ACCURATE STRUCTURAL ANALYSIS OF THE GREAT PYRAMID, SACRED CUBIT AND KING'S COFFER. I HAVE AT LAST FOUND A FORUM IN YOUR BI-MONTHLY NEWSLETTER

RUSS SMITH, OF CHESTER, IDAHO WRITES: "AFTER READING THE LAST TWO 'GUIDE ISSUES I'M TRYING PYRAMID EXPERIMENTS ON OUR CARS. I HAVE A FOUR INCH HIGH ALUMINUM MODEL MOUNTED AHEAD OF THE CARBURETOR. A PIECE OF COPPER WIRE CONNECTED TO THE APEX, WITH THE OTHER END INSERTED THROUGH A HOLE IN THE AIR CLEANER AND WIRE ENDS SPREAD OUT MAY IMPROVE MY GAS MILEAGE, AND IMPROVE RUNNING CONDITIONS. I HOPE THERE IS LESS WEAR ON THE PARTS AND THE PYRAMID ENERGY PERHAPS, REPAIRS THE MOTOR'S MOVING PARTS.

EVERYTHING SINGS By David Bihary

I've been studying Natural Music and wish to share some ideas. Natural music or Music of the Spheres includes all vibrations both above and below the ear's audibility, for example: The human ear hears about nine octaves; the human eye is sensitive to vibrations forty octaves above the audible; the color range is less than one octave from red "A" to violet "F." A sidereal day spin-sings bass, 25 octaves below the audible G, This G note is colorless 65, octaves higher, and it becomes Hydrogen and Oxygen about 70 octaves above the audible. Perhaps a musical scale tuned harmoniously to seasonal flows in molecules, planets, angelic stars or the wind might have a beneficial, evolutionary effect. Tuning our music to real vibrations may tune our hearts as well.

I believe if we mentally extend the musical scale above and below audibility to cover the endless electro-magnetic spectrum we'll discover how real things sing the same note many octaves apart. Octaves are powers of 2ⁿ. Musical fifths are powers of 3ⁿ; major chords 4567, and in time we learn the rest. The elements hum about 70 octaves above audible and the planets hum about 200 octaves higher. Radio astronomers "see" radio emissions on various wavelengths about 20 octaves above the audible. Could the mind's Eye-Ear possibly learn to know and discriminate telepathically in music? Perhaps a wire antenna 21 cm. long would tune in the radio astronomy hydrogen emission from outer space?

What wavelength tone is your spinal cord? Maybe the molecules of DNA elements (H, O, C, N, P) would resonate your chromosomes to self-awareness? Maybe the dharma megha water-electron note will wash away my ignorance? In what keys do the birds sing? There are undoubtedly many other natural rhythms besides this preliminary listing. I refer you to your own imagination and to *The Music of the Spheres*, by Greg Murchie.

The following chart relates musical notes and various natural rhythms, hopefully to foster music more ethereal than the common musical scales. Most natural notes are in-between notes of the A=440 Hz standard Equal Tempered Scale. The sharp or flat deviations are given in percent of a semitone as calibrated on a strobe tuner. It's possible to tune a synthesizer, or maybe your own alpha waves to the tones of your choice. Which notes make you wise, healthy, and happy? Perhaps we could work out highly beneficial wind chimes.

David welcomes correspondence with natural music lovers. And for a more complete description of his chart, write to: David Bihary, 1240 Crescent Drive, Painesville, Ohio 44077.

Hz.) Louis de Broglie's gravity tone formula is: Frequency equals MC² over Planck's Constant. $Hz = \frac{MC^2}{h}$

The chart also computes octaves but other powers display remarkable harmony. For example, the powers of 3ⁿ reveal that the Earth and the Moon have gravity waves in tune (Earth-8.1099 x 10⁷⁴ Hz (cycles per second); Moon-9.975 x 10⁷² Hz; this divided by 3ⁿ yields 730,727,243,242

SOME NATURAL VIBRATIONS RELATIVE TO STANDARD PITCH

Nadam kevalyum peace	Hz* = 10 ⁿ	Octaves	Hz	Nearest tone
TIME				
Sidereal day 23 hr. 56 min. 9 sec.	1.16063	*-5 -25	389.42	G-9***
Tidal moon shadow 24 hr. 53 min.	1.111	*-5 -25	357.5	F+39
Mean solar day 24 hr.	1.1571	*-5 -25	388.36	G-16
One mean solar hour	2.7777	*-4 -21	582.5	D-15
Solar rotation 608 hr.	4.57	*-7 -30	490	B-14
Sidereal month 27.322 days	4.235	*-7 -30	454.9	A#-43
Synodic month 29.53 days	3.922	*-7 -30	420.8	G#-18
Nine months 275 days	4.2076	*-8 -39	361.4	F#-41
One year 365.26 days	3.1671	*-8 -33	272.4	C#-30
The pseudo power plant	60			A#+50

SPACE

Sample distance at the speed of light: 31 in./78.7 cm.	3.81	*8 +20	363.5	F#-31
Distance to Earth's center .021 sec.	47.2			F3+38
Mean distance to moon 1.27 sec.	7.85	*-1 -9	333	E+17
Mean distance to sun 499 sec.	1.99	*-3 -17	262.7	C+7

LARGE MASSES

Sun	2.7006	*80 258	583.1	D-12
Mercury	4.316	*73 236	390.8	G-5
Venus	6.623	*74 240	374.8	F#+22
Earth 5.98 x 10 ²⁷ gm.	8.1099	*74 240	459.0	A#-27
Moon	9.975	*72 234	361.3	F#-41
Mars	8.705	*73 237	394.2	G+9
Jupiter	2.578	*77 248	570.1	C#+48
Saturn	7.707	*76 246	340.8	F-42
Uranus	1.178	*76 244	416.6	G#+5
Neptune	1.393	*76 244	492.8	B-4
Pluto	2.119	*73 235	383.7	G-37
Others?				

HUMAN EYE

Visible red light 6500 A	4.6	*14 40	420	A
(Orange - B; Yellow - C; Green - D; Blue - E; Violet - F; Colorless - G)				

UPHILL DESCENT

On the Rua Amen, nicknamed Street of the Peanut, in Belohorizonte, Minas Gerais, Brazil, magnetic fields from the earth causes vehicles to coast uphill. Mother Earth has her energy points as we have seen at the Oregon vortex, for example.

Last January, while using the Cameron Aura-meter and applying some geomantive techniques, I was able to outline numerous clusters of vortexial energies issuing upward from the pavement and along both sides of the Rua Amen. The lively spirals were from a few to several feet in diameter. The gyrations grew into ever-widening coils of energy upward. Underfoot, the ever expanding rays from concentric rings seemed to weaken as the Aura-meter in my hand moved outward from the energy center. The general area was abundant with a bluish-gray to black hued shale, and volcanic rock was in evidence.

Suddenly, the sound of an approaching bus roared in our ears. The driver with a load of tourists aboard attempts the hill climb in reverse. Then he shuts off the ignition and leaves the slow moving bus' gears in neutral. Within a short time, the vehicle is coasting backward uphill and gaining speed which requires the driver to apply the brakes from time to time to avoid losing control at the first curve a little further up the street. Conversely, imagine if you don't keep applying your accelerator while driving down Peanut Street, your car will come to a full stop. When two rubber balls are placed some distance apart, they are attracted to each other, one rolling down and the other rolling up where they finally touch and stop.

From some preliminary onsite dowsing I noted the following:

1. A large number of orifices (vertical vents) of various sizes and energy potential are arranged by nature in regular and irregular patterns according to her own mysterious design. They seem to be extinct geysers, sealed off at ground level in the eons past, closed off by surface activity and erosion at ground level for some distance into the underground.



Tony Fisichella, will be host and chairman of The New Age Festival '76, July 30 - August 6th, at the Holiday Inn, Hempstead, Long Island, New York. write to: 265 S. Broadway, Hicksville, N.Y. 11801
Dr. Douglas Baker, will again present The International Festival of Esoteric Sciences & Yoga at Maidenhead, near London. Write: Mrs. G.B. Moseley, 5 Manor Gate, 12 St. John's Ave. London S.W. 15 ZAD. Tel: 01-789 4711.

2. Forcefields below registered as ever expanding, concentric circles while above ground, they manifested as right or left-handed spirals. Others indicated both clockwise and counter-clockwise spin (the double helix).

3. The Rua Amen was constructed above the site of one or more extinct volcanoes, surrounded by several, once active geysers. These orifices or tubes in the subterranean strata are frequently intersected by rifts or faults creating some mysterious grid pattern, and may be the probable cause of these magnetic anomalies.

4. The rock found there should be tested for the presence of magnetic properties and should prove to be most interesting study material for pyramid and free energy experiments.



TELEPATHIC LOVE FOSTERS SUPER-BUNNIES

Paul Louis Laussac, mechanical engineer, architect-builder of Belohorizonte, Minas Gerais, Brazil, displays two of his largest rabbits, both weighing approximately twenty-seven pounds. These creatures normally mature to a maximum weight of seven or eight pounds—a fair-sized bunny in anyone's hutch. How does one triple the weight of rabbits without putting lead pellets in their food?

Well, Paul Louis, says he learned the technique from a Brazilian master who is linked in consciousness with a Tibetan adept, who in turn has given the Brazilian guru certain powers, some as proof to be sure he carries out his humanitarian assignment. One of these according to Paul Louis, and witnesses, is the blind master's ability to generate an energy field before his out-turned palms, and untouching, causes a large tree to fall to the ground away from him.

This humble teacher who never attended a public or private school in his life is instructing Paul Louis in the wisdom of the ancients. The bi-lingual, young man now has an over 200 IQ. "The rabbits are quick to respond to telepathically directed signals of love and encouragement, keeping their bodies strong and pure," says Paul Louis, who feels he is attuned to every atom within the animals' living system.

The master says he has been promised that his eyesight will be restored when he has completed certain work designated by the Tibetan adept. Paul Louis, a man of many talents, has won some of Brazil's top awards for his imaginative architectural design of two cathedrals. "Every piece of material and subsequent form portrays a profound religious and philosophical meaning," say his admirers. A bright but gentle light shines forth from Paul Louis' eyes. Both he and his master believe they are inseparably linked by karmic ties.



PAUL LAUSSAC'S BRAZILIAN MASTER



WATER FLOWS UPHILL . . . Brazilian workman with water-can cheerfully demonstrates how nature plays tricks on man's version of known physical laws. Dr. T. Galen Hieronymus, tries to establish a mythical benchmark. The lath in his hand was used to give the untrained eye some perspective of elevation where surrounding, multi-level slopes tend to confuse one's concept of altitude and depth perception. Water washes upward along the asphalt pavement, indicating some kind of anti-gravity effect. Paul Louis Laussac is featured in an accompanying article; his mother observes the phenomenon (background right).

DOWSING AND PYRAMID ENERGY WORKSHOPS-- Los Angeles and Southern California area-- In answer to several requests... Presented by Bill Cox, editor of the Pyramid Guide SUNDAY, JUNE 6TH, 1976 12:30 p.m. to 4:30 p.m. DOWSING, RADIESTHESIA & MAP DOWSING WORKSHOP, LECTURE, DEMONSTRATIONS AND AUDIENCE PARTICIPATION \$15.00, STUDENTS @ \$10.

THEN ON SATURDAY, JUNE 12, 1976 A UNIQUE, OUTDOOR, ALL-DAY DOWSING CLASS AND IN-THE FIELD WORKSHOP IN BEAUTIFUL SANTA BARBARA, CALIF. SESSION STARTS IN THE MORNING, WITH BREAK FOR PICNIC LUNCH, FOLLOWED BY AFTERNOON SEARCH FOR UNDERGROUND WATER, BURIED ARTIFACTS, OIL, AND PERSONAL INSTRUCTION WILL BE GIVEN WITH THE PENDULUM, FORKED-SWITCH, WAND, RODS AND THE CAMERON AURAMETER. THOSE WHO ALREADY OWN AN AURAMETER WILL HAVE THE OPPORTUNITY TO ASK QUESTIONS AND RECEIVE SOME VALUABLE POINTERS. TIME: 10:30 to 4:30 p.m. Workshop \$15.00 and \$10.00 for students... and teens... Children under ten years of age with their family admitted free. For more information and a map, write to Bill Cox, P.O. Box 30305, Santa Barbara, Ca 93105

PYRAMID AND FORM ENERGIES WORKSHOP... SATURDAY, JUNE 19TH, 1976 4 HOUR SESSION Course includes: Making and experimenting with your own replica, Pyramidology, detecting and measuring pyramid and other form energies & a full range of experiments.

Write for descriptive brochure. WORKSHOP \$15.00, and students \$10.00
P.O. Box 30305, Santa Barbara, CA 93105 Phone (805) 965-0502

Greetings,

...I have been working on a geometrical model of the Great Pyramid of Giza to 10-place accuracy and am considering publishing some of my findings which include:
a.) The basewidth and slant height do, in fact, relate to the length of a minute of arc at the equator with fantastic accuracy. b.) The design is by the ϕ philosophy and is not by the design by π philosophy. c.) The basic unit of the builders measure is $1/2$ the tunnel's width. d.) The rounding off of numbers has caused much misunderstanding and false conclusions. I would appreciate information relative to your activities and publications. Very truly yours, Elmer D. Robinson
Wheaton, Maryland

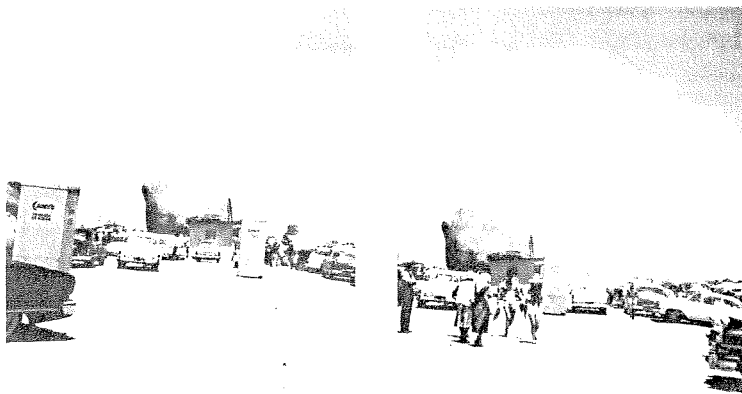
GEORGE H. HAMILTON, PRESIDENT OF SOLAR ENERGY CO. 818 18TH ST. WASHINGTON, D.C. 20006, RECENTLY WROTE: "I VERY MUCH ENJOY READING YOUR FINE PUBLICATION THE PYRAMID GUIDE. WE ARE PRESENTLY CONDUCTING EXPERIMENTS IN PYRAMID POWER AND SEEK COMMUNICATION WITH OTHER PROFESSIONALS WHO ARE ENGAGED IN MAGNETIC SHAPE RESONANCE RESEARCH." HAMILTON OFFERS A VERY INTERESTING PAPER NAMED "SOLARICON" @ \$10.00

JAMES E. LEWIS, 850 NORTHWEST AVE. TALLMADGE, OHIO 44278 MARKETS AN INVENTION CALLED "THE MYSTIC PYRAMID." LEWIS SAYS IT'S A NEW TYPE OF GAME, "WHEREIN THE PENDULUM ITSELF, WHICH IS A PYRAMID ON TOP, COLLECTS ENERGY FROM SURROUNDING PYRAMIDS AND FOCUSES IT ON THE BOARD." HE SAYS, "IT IS HOPED THAT WITH THIS DEVICE A PERSON CAN GET ANSWERS FROM HIS SUBCONSCIOUS AND ACTUALLY TAP HIS PSYCHIC POWERS."

A. OMEPYAN, OF BELLVILLE, ILLINOIS, INQUIRES: "IS THE THREE SIDED PYRAMID WRITTEN ABOUT IN A NEWSPAPER AS EFFECTIVE AS THE FOUR SIDED ONE?"

IT IS NOW KNOWN THAT IN SPECIFIC EXPERIMENTS THE TETRAHEDRON (THREE SIDED) PYRAMID) MAY BE MORE POWERFUL AN ENERGY ACCUMULATOR THAN REPLICAS OF THE GREAT PYRAMID (FOUR SIDED) MODEL, PARTICULARLY WHEN CRYSTALS ARE USED.

FTMI JOHN M. PERO USN, OF MARE ISLAND, CALIF. DESCRIBES AN INVENTION HE CALLS "THE ASTRAL GENERATOR" AN ELECTRONIC-PYRAMID DEVICE THAT PRESUMABLY ENHANCES ASTRAL TRAVEL. HE WELCOMES ANY FEEDBACK OR HELP FROM READERS WORKING WITH SIMILAR EXPERIMENTS. ADDRESS CORRESPONDENCE TO HIM AT: CSTSC, CSD SMS 71330, MARE ISLAND, CALIF 94592.



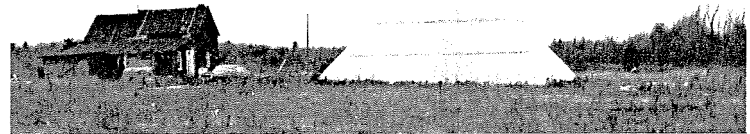
SURPRISING APPEARANCE OF A VAPOROUS FORM ... is captured in one of two polaroid photos taken minutes apart at the 1959, Giant Rock, Calif. UFO convention. Photographer was reserve county sheriff, F.W. Ackerman, of Twentynine Palms, Calif. The event was sponsored by George and Eva Van Tassel, well known UFO researchers. The camera caught what human eyes apparently couldn't see; a strange saucer-like cloud. Deputy Ackerman was only taking pictures of friends and scenery at the time.

Dear El Cariso Publications,
I am currently a sophomore at Tufts University in Medford, Mass. In many ways, Tufts offers students alternatives to the traditional classroom situation. One such program, the College Within, allows a student to initiate his own project. Each student thinks up a topic, and with the help of a faculty advisor and two group mentors writes a contract he must fulfill. Throughout the course the student researches and becomes a vital force in group meetings. Each group takes on the personality of its members. This program appeals to me for many reasons. There is no competition. The student only deals with the pressures placed upon himself, and he can choose his own topic. I have chosen pyramid power as my subject. I was introduced to pyramid energy by a friend who sleeps in a pyramid tent, and he meditates while wearing a pyramid hat.

I am entering this project with a great fascination, while remaining open-minded, yet skeptical. I have a few shady ideas on how to approach the subject. I would appreciate any information you can send.
sincerely, Pamela A. Wayne

Dear Sir,
We enjoy the newsletter very much. Keep programming excellence. Yours for a better world- here and hereafter. Al Lippert, Santa Barbara, Ca.

Gentlemen,
Fascinating for everyone. I would like to see more on levitation. The smaller type is hard to read.
Howard F. Smith, Oceanside, Calif.



GROWING INSIDE ... Les Brown, of Bancroft, Ont. Canada, prepares to close the doors of his pyramid greenhouse. Brown sees his theories come to fruition with an Eden-like garden flourishing within. The young man writes: "One person in every nine is starving to death. . . While I'm well and satisfyingly fed, myriad other people throughout the world are suffering from hunger. . . This thought constantly tortures me; for long I have wondered what could be done about it." Brown has had a dream since boyhood, growing super-crops indoors. "Four years ago," he writes, "I retired to a secluded farm in Bancroft, left a busy life as a fashionable interior-decorator and constructed the first in a series of monster greenhouses. . ."

these colors appeared on the pyramid's sides there was general agreement as to the pattern of the seven pyramid panorama. The Shensi created a line of forms in ever diminishing size in their relative positions in the seven mile long, north to south line, on the floor of an inhabited, cultivated valley.

All concurred, the largest pyramid resting at the north end of the chain, appeared to be a thousand feet or more in height—well twice above the altitude of the Great Pyramid of Giza, and the second in line southward was approximately five hundred feet high. Schroder and Maman believed the Shensi giant's base on one side extended some fifteen hundred feet, more than three times the length of a Great Pyramid's base side. This indicates a much different angle of slope than defined as originating in the pi or golden section formulas attributed in the Great Pyramid's construction. Stephens thought the Shensi giant's elevation reached at least twelve hundred feet. Schroder said the casing blocks strewn around the base were cut from common field stone. All observed wide, deep-cut, rock and debris-filled gullies ripping down through the vegetative covered sides. It actually gave the close-up visitor the on-site impression of exploring the side of an ordinary mountain.

Schroder said local records suggested the Shensi pyramids were five thousand to six thousand years old. Still the old traders and Stephens were unable to find any artifacts or openings to inner chambers in the giant mound; nor were they able to find anything of the pyramid chain's origin or purpose after questioning local inhabitants.

Another report claims the Shensi white pyramid is eight hundred feet high. This is likely another totally unrelated structure as recorded in the Shensi complex. A dating pyramid nearby may verify that this one was constructed in 259 A.D. in honor of Chinn. This Master form may have been used by space people, and the dating, (color) code is believed to be understood by few people on earth. The sine angle of this particular pyramid is said to be 53 degrees, and serves as a four sided prism or collector of white light blending the seven basic colors of the light spectrum. By contrast all seven Shensi pyramids are flat-topped and constructed of alternating layers of pounded limestone and earth.

Information channelled by Rev. Robert Short, of the Blue Rose Ministry, Joshua Tree, California, disagrees with the possibility that the so-called, Shensi pyramids have anything to do with the crystal-capped monument believed sighted by James Gaussman in 1942. To support this view, the Shensi giant—or one resembling it, appears in an airforce photo taken of a four-sided pyramid in 1947. This photo was reportedly published in one or more U.S. newspapers about that time and the glossy is now presumably tucked away in U.S. Airforce files. Rev. Short's channelled comments from an intelligence identified as "Kronos," repeatedly states the crystal-capped wonder is a three-sided pyramid, an overall truncated height of 1,725 feet, with a portion of its size obscured by windblown heaps of dirt and alluvium eroded through time from the mountain slopes nearby. Since Kronos claims the crystal capstone is two hundred feet high, this makes the massive form overall, 1,925 feet high, actual base to tip. Kronos also sees the pyramid's true location as lying near 112 degrees, 4 minutes east longitude, and 30 degrees, 5 minutes north latitude; due east and slightly north of Chungking, in Hupei Province, China. This plots the longitude and latitude more in conformity with flight patterns over the "hump" and the Himalayas from India to China. Assam airbase lies south of Tibetan and Bhutan borders, west southwest of Chungking and Hupei Province.

One message issuing from Rev. Short's voice-box agreed with one rumor that the three-sided (manmade) crystal capstone is two hundred feet high, a constructed crystalline device of incredible size. Kronos' observation compared our present technology with that of the ancient masters, citing the huge, brilliantly polished, two hundred inch, crystal glass mirror developed in Palomar Observatory's remarkable, celestial telescope. "They . . . the ancients, in 650,243 B.C. possessed the knowledge to grow and construct this immense crystal topstone. It was used as an energy accumulator, and later for religious and ritualistic purposes," he said. "Shamans, or wizards of more recent times using this device, were able to hold sway over the superstitious aborigines and semi-educated natives living in the vicinity," he added. "These people were descendents of the Lemurians and Tibetan races."

The channelled discourse went on to explain that the crystal capstone was constructed to withstand energy in motion. *This strangely implies there can be energy at rest, a curious but interesting idea when one considers the power available in the ether or pre-form plasma of all matter and so-called non-matter.* "These forces pass through the crystal topstone in the manner of the (Nikola) Tesla tower, designed by that late, great

Another Brazilian archeologist, Bernardo Guimaraes declared he had deciphered part of the Phoenician inscriptions with: "Here rests Badezir, son of Vet-Ball of Tiru-Fenice."

São Paulo parapsychologist, Willie Wirtz, told me he personally spent weeks atop the Gavea Stone, even sleeping there, maintaining an around the clock vigil with recording apparatus. His son Deo, a Portuguese-English interpreter, also repeated the test. Both failed to capture one sound or to be alerted to anything unusual transpiring around the legendary site.

Historian, Rocha Pita, author of a book on Brazilian folklore, claimed he spent some nights above the Gavea Stone, and heard the low resonant thump of heartbeats issuing from the seemingly restless sphinx.

One member of a group camping at nearby Praca das Bandeiras (Flag Square), awakened one night in a dense fog to see three tall, regal appearing figures, strolling toward the woods in bright red robes encrusted with gold symbols. "Investigation revealed," he said, "that the Lapa Portal was open." He believed the spectres were visitors from an underground civilization. He also said he was somehow telepathically warned not to arouse the other sleeping members of his party. Brazilians have frequently reported seeing strange lights and other possible UFO phenomena above the Gavea Stone. Some believe the sphinx-tomb is a cosmic energy accumulator. Magnetic radiations from the Gavea Stone—as with the Great Pyramid of Giza—seem to disrupt the sensitive instruments in nearby airplanes. It is said that the Brazilian airforce restricts pilots from flying over the Gavea Stone.



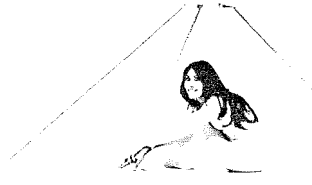
William Addams "Bill" Welch, featured in the Jan-Feb 1976 edition of the Pyramid Guide, made his transition from this plane of existence on February 2, 1976. Bill, was an active parapsychological researcher, working for several years, ever improving his art in gathering scientific evidence of life and consciousness beyond physical death. His voice-tape recordings with spirits, and/or beings in other dimensions won him acclaim throughout North America, particularly in Southern California, where he was on the board of directors of The Society for Psychical Research. We wish Bill Godspeed.

electrical genius, to disperse (electrical) energies over the earth's surface without the use of wires," said Kronos. "Furthermore, the crystal capstone, as with other crystal artifacts and oracles are indeed powerful, high vibration, communicative devices." This view is supported many times over by other channels. Another for example comes from Florida, via an interdimensional entity identified as Lama Sing, reporting: "The pyramid's construction was such to identify the planet earth from elsewhere . . . to project then, the use of the larger crystal for emanation of energies, climatic control, water flow, life rejuvenation, storage and energizing of foodstuffs; to cause anti-gravity effects in air and water travelling craft, and for many other useful purposes by pre-history civilizations.

In the next issue of the Pyramid Guide, the esoteric meaning of the various colors displayed on the Shensi pyramid's sides will be explained. The importance of these and other planetary pyramids associated with a grid system or energy pattern as found in a band along the equator; their peculiar relationship to the location and movement of sun spots will also be covered. The world is on the brink of great rediscoveries when the true meaning of pyramids, crystals, solar and higher energies are understood as parts of a universal system.

complete copper pyramid

Pyramid shown
is 6' base



Enclose a money order for: \$107 (includes postage for non-res. of Ca.) or \$113 (includes tax and postage for Ca. res.)

ORDER FROM: The Pyramid Guide, P.O. Box 30305, Santa Barbara, CA 93105

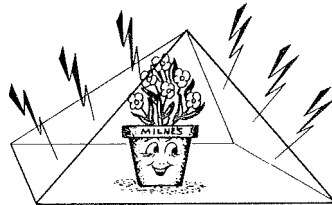
PYRAMID FORM PRODUCES SUPER-PLANTS . . .

3 C-60 cassette tapes @ \$5.95 each. "Gib" Milne, renowned, Toronto plant grower tells Bill Cox how he supercharges plants and vegetation with pyramid energy, acupuncture and electroculture techniques; discoveries, monumental in scope, (see story in No. 18 July-August '75 Pyramid Guide Newsletter). Order c/o The 'Guide.



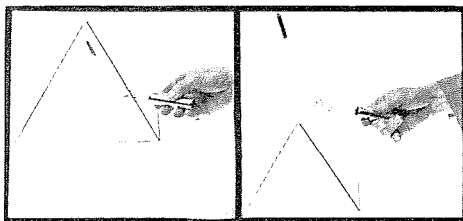
PLANTS THRIVE UNDER PYRAMIDS

Gilbert A. Milne, well known Canadian photographer, gardening lecturer & author, shares the opinion that flowers, fruits and vegetables grown under properly constructed pyramids are stimulated by some, as yet unidentified, energies. He has observed that seeds germinate faster; seedlings grow stronger; root systems grow longer. Indoors, or garden. Five models—in three sizes—of the Milne Electroculture Pyramid with instructions and money-back guarantee are available in 12", 6" or 3" height. One each of five—\$16.95. One each 12" and 6"—\$9.90 One 12"—\$7.00. (Ontario residents add tax). Information available. Electroculture Pyramids, 2437 Bayview Ave., Willowdale, Canada M2L-1A5.



DOWSING HANDBOOKS, MAP DOWSING and OIL LOCATING, Cameron and Cox at \$2.75 each, a unique, functional Dowsing approach at a distance. **AQUAVIDEO**, Locating Underground Water, in soft cover, Cameron and Cox at \$6.95. One of the most comprehensive, step-by-step, fully illustrated Dowsing methods ever written. Order above from El Cariso Publications, P.O. Box 30305, Santa Barbara, CA 93105

THE ORIGINAL CAMERON AURAMETER... world's most sensitive Dowsing instrument... twenty years in its development, and an effective experimental Dowsing device. The AURAMETER is lifetime guaranteed against defects, workmanship assured... Over 4,500 in use throughout the world today. The AURAMETER is a combination Water Compass, Weighing Device and Upright Pendulum. El Cariso Publications, sole manufacturer — \$49.50 postage paid. Write for free descriptive brochure, c/o Pyramid Guide.



The CAMERON AURAMETER \$49.50 and *PETROLEOMETER \$195.00. Ingenious, Dowsing Instruments, For Diving Treasure, Ore, Underground Water, Buried & Lost Objects. Auras, Etheric Rays, Beams, Missing Persons, Pets, *Oil - Gas, and Hidden Substances.

BACK ISSUES OF THE PYRAMID GUIDE, INTERNATIONAL BI-MONTHLY NEWS-LETTER... in any combination or series... Issues number 1 (Sept.-Oct. 1972), through current issue number 23, @ \$1.00 each. Order from The PYRAMID GUIDE, P. O. Box 30305, Santa Barbara, California 93105.

PYRAMIDODOLOGY

For a listing of over 25 Pyramid Related Books and more than 30 Pyramid Products please send 2 stamps to:
PYRAMIDS-
8143 - PG Big Bend
St. Louis, Mo. 63119

PURE QUARTZ CRYSTAL from Brazil and Madagascar... carefully chosen and beautifully formed with artistic and loving care. All pendants, crosses, pendulums and crystal balls fashioned by a skilled lapidariast- biocrystallographer. Crystals come in citrine, smoke, rutilated, amethyst, angel's hair and clear quartz pieces... If a diamond is forever, the crystal (nearly as hard), and sparkling clear, is eternal; created millions of years ago in the earth by nature (God) for the immortal wearer... Crystal selection shown by Order from The Pyramid Guide, P. O. Box 30305 Santa Barbara, CA 93105

NEW SUBSCRIPTION INFORMATION ... to The PYRAMID GUIDE international, bi-monthly newsletter... First Class Mailing @ \$6.00 per year in the U.S.A. \$7.00 in Canada and Mexico (airmail \$3.00 extra)... All other foreign subscriptions by airmail only @ \$10.00 per year.

PYRAMID ENERGY SCIENCE LAB KIT

Just Released! Absolutely Unique!

Our NEW PYRAMID ENERGY SCIENCE LAB KIT is the ONLY Science Kit that gives you all the materials necessary to explore the mysteries of Ancient Science and brings a new approach to your lab curriculae.

Use the accurate replica PYRAMID to perform dozens of fascinating and astounding experiments, including those found in the exciting paperback edition of **THE GUIDE TO PYRAMID ENERGY!**

EACH KIT INCLUDES:

- | | |
|---------------------------------|-----------------------------------|
| "THE GUIDE TO PYRAMID ENERGY" | 12" Base Open Frame Pyramid |
| 6" Base Heavy Cardboard Pyramid | Brine Shrimp, Water Preparation |
| Container of Seeds | Two Planting Trays and Soil |
| Two Magnets and "Magnetic Dust" | Compass and Complete Instructions |

#510 Complete Kit — Suggested Retail \$9.95

PYRAMID POWER - V, Dept. 5

3015 Nebraska

Santa Monica, California 90404

finest spiritual and scientific information in the psychic field.

SUBSCRIPTION FORM

THE Psychic Observer

and CHIMES
E/S/Press, Inc.

One year (12 issues) \$7.50
Canadian and Foreign Subscriptions \$9.50

CHECK PAYABLE TO *Psychic Observer*
Box 8606, Washington, D.C. 20011

WHERE HISTORY BEGAN

Egyptian Tour-Masons & Friends
October 15 to October 19, 1976
Cairo & Sphinx at Gizeh, Luxor & Karnak Temples, Valley of the Kings & Queens, Sakkarah, Memphis, Churches in Old Cairo, Aga Khan Mausoleum, Cairo Museum, Philea Temple, Mohamad Ali Mosque, Denderah, Aswan, Abu Simbel & Holy Family Churches in Old Cairo. Deluxe accommodations. Rate—J.F.K. (New York City) & back @ \$1630. Single Supp. \$290. Ralph Lichty, Egyptian Tour Director, 430 West 24th St., New York, N.Y. 10011

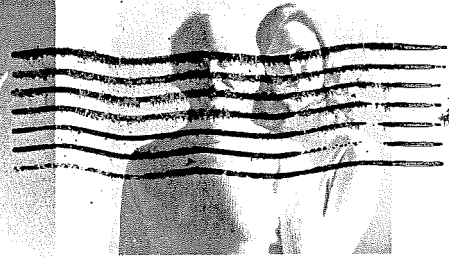
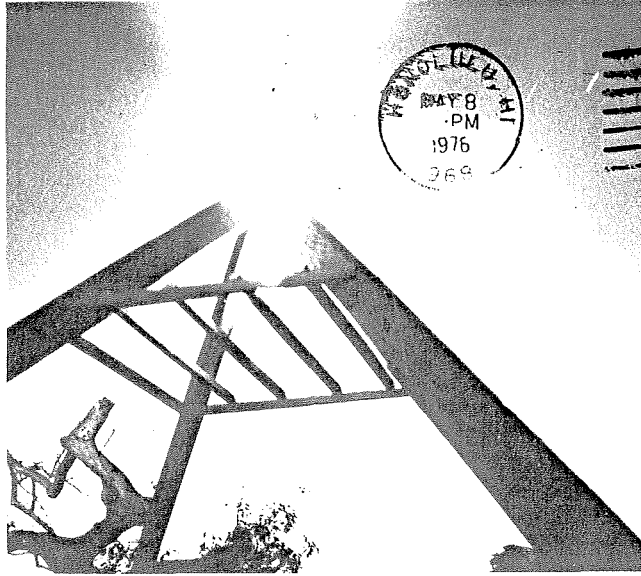
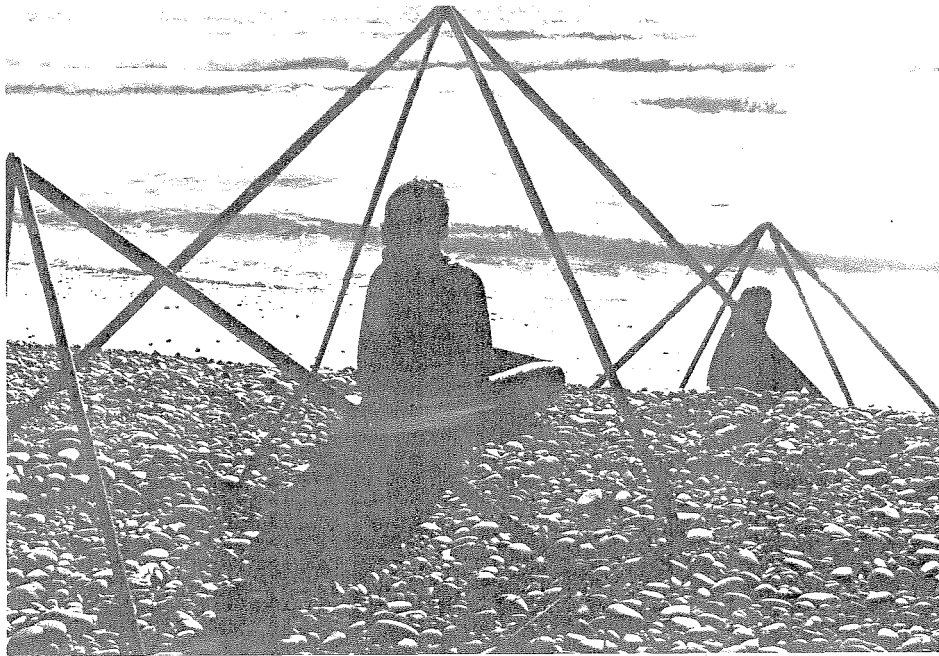
THE NEW ATLANTIAN JOURNAL

UFO NEWS AND VIEWS ON A WORLDWIDE SCOPE. INDEPTH REPORTING ON PARANORMAL EVENTS. WE INVESTIGATE THE UNKNOWN, THE UNEXPLAINED AND THE UNEXPLORED. \$5.00 PER YEAR & \$6.00 FOREIGN. JOAN O'CONNELL, EDITOR. SUBSCRIBERS WRITE: 4280-68TH AVE. NORTH, PINELLAS PARK, FLA. 33565

HERE and NOW

- The Uni-Com Calendar — giving times, places, fees & descriptions of hundreds of classes, films, lectures & services every month.
 - A guide to organizations, counselors & teachers in your area:
- One year \$6.50 prepaid (\$7 if billed). Two years \$11.50 prepaid (\$12 billed). Foreign: \$10 per year, UNI-COM, Box 11716-A, Palo Alto, Ca. 94306

ALL PRICES SUBJECT TO CHANGE WITHOUT NOTICE



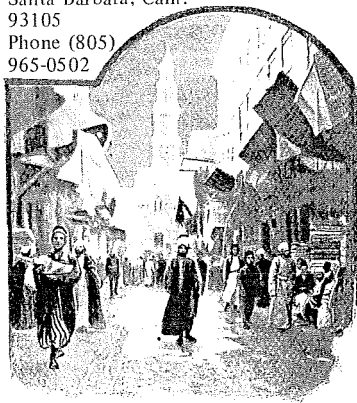
**BILL and LINDA
SANTA BARBARA, AT LAST**

We have moved . . . The 'Guide has passed through many important changes in its mission, beginning four years ago at Lake Elsinore, California. We are now centered in beautiful Santa Barbara, a unique mountain-seaside community and a most cardinal focal point of unfolding New Age Consciousness. The Pyramid Guide now reaches a wider, more populated readership. Watch for the valuable collection of original, and previously unpublished articles soon to appear. Please direct all calls or correspondence to: Bill Cox or El Cariso Publications, P.O. Box 30305, Santa Barbara, Calif. 93105. Phone (805) 965-0502.

PHOTOGRAPHIC PHENOMENA, (upper panorama) . . . Meditators, the majestic sea and disciplined geometry of the pyramid form all coalesce into a lattice of light, shape and shadow at Leucadia, California. **PHOTOGRAPHIC ILLUMINATION**, (mid-page panels) . . . Ghost lights appear to be intensified around the pyramid apex. Inside the replicas, photography frequently captures wavy lines, light bubbles and other types of filmed distortion. (Photos by G. Moskos, Leucadia, Calif.)

EL CARISO PUBLICATIONS,
P. O. Box 30305
Santa Barbara, Calif.
93105
Phone (805)
965-0502

FIRST CLASS MAIL



STREET SCENE IN CAIRO.