

ack  
T.E. Allen  
1/13/13  
1/13/13

# THE PSYCHICAL REVIEW

A QUARTERLY JOURNAL OF

*Psychical Science and Organ of the American  
Psychical Society*

VOLUME I.—NUMBER 1

AUGUST, 1892

## CONTENTS

FRONTISPICE. *Rev. M. J. Savage*

|  | PAGE |  | PAGE |
|--|------|--|------|
| SOME ASSURED RESULTS IN PSYCHICAL SCIENCE AND THE PRESENT OUTLOOK. <i>Rev. M. J. Savage</i> . . . . .  | 1    | PSYCHICAL RESEARCH AND SCIENCE. <i>Rev. T. E. Allen</i> . . . . .  | 52   |
| IMPLICATIONS OF PHYSICAL PHENOMENA. <i>Prof. A. E. Dolbear</i> . . . . .   | 7    | PROF. LODGE UPON PSYCHICAL RESEARCH, . . . . .   | 60   |
| PSYCHOGRAPHY IN THE PRESENCE OF MR. KEELER. <i>Alfred R. Wallace, D. C. L.</i> . . . .   | 16   | PSYCHICAL CASES AND REFLECTIONS FROM PERIODICAL LITERATURE . . . . .   | 69   |
| UPON THE RELATIONS OF INVESTIGATORS AND PSYCHICS. <i>Rev. T. E. Allen</i> . . . .  | 19   | EDITORIAL . . . . .  | 83   |
| PSYCHOGRAPHY: REMARKABLE CASES. <i>B. O. Flower</i> . . . . .  | 28   | The Psychical Review—Our October Issue—An Earnest Word to Our Readers—Branch Societies—Implications of the Spiritistic Hypothesis—The First Year's Work—The Reports upon Psychography—One Way to help on the Work. |      |
| PROCEEDINGS OF THE AMERICAN PSYCHICAL SOCIETY . . . . .  | 33   | OFFICERS AND MEMBERS OF THE AMERICAN PSYCHICAL SOCIETY . . . . .   | 96   |
| Address by <i>Rev. M. J. Savage</i> . Reports upon Psychography by <i>Prof. Dolbear</i> , <i>Rabbi Schindler</i> , and <i>Mr. Garland</i> . Discussion, etc. |      |  |      |

THE RESPONSIBILITY FOR ALL FACTS AND INFERENCES EMBODIED IN PAPERS PUBLISHED IN THIS JOURNAL RESTS ENTIRELY WITH CONTRIBUTORS.

BOSTON, MASS.  
AMERICAN PSYCHICAL SOCIETY  
ROOM 19, PIERCE BUILDING, COPLEY SQUARE





# THE PSYCHICAL REVIEW

A QUARTERLY JOURNAL OF

*Psychical Science and Organ of the American  
Psychical Society*

VOLUME I.—NUMBER 2

DECEMBER, 1892

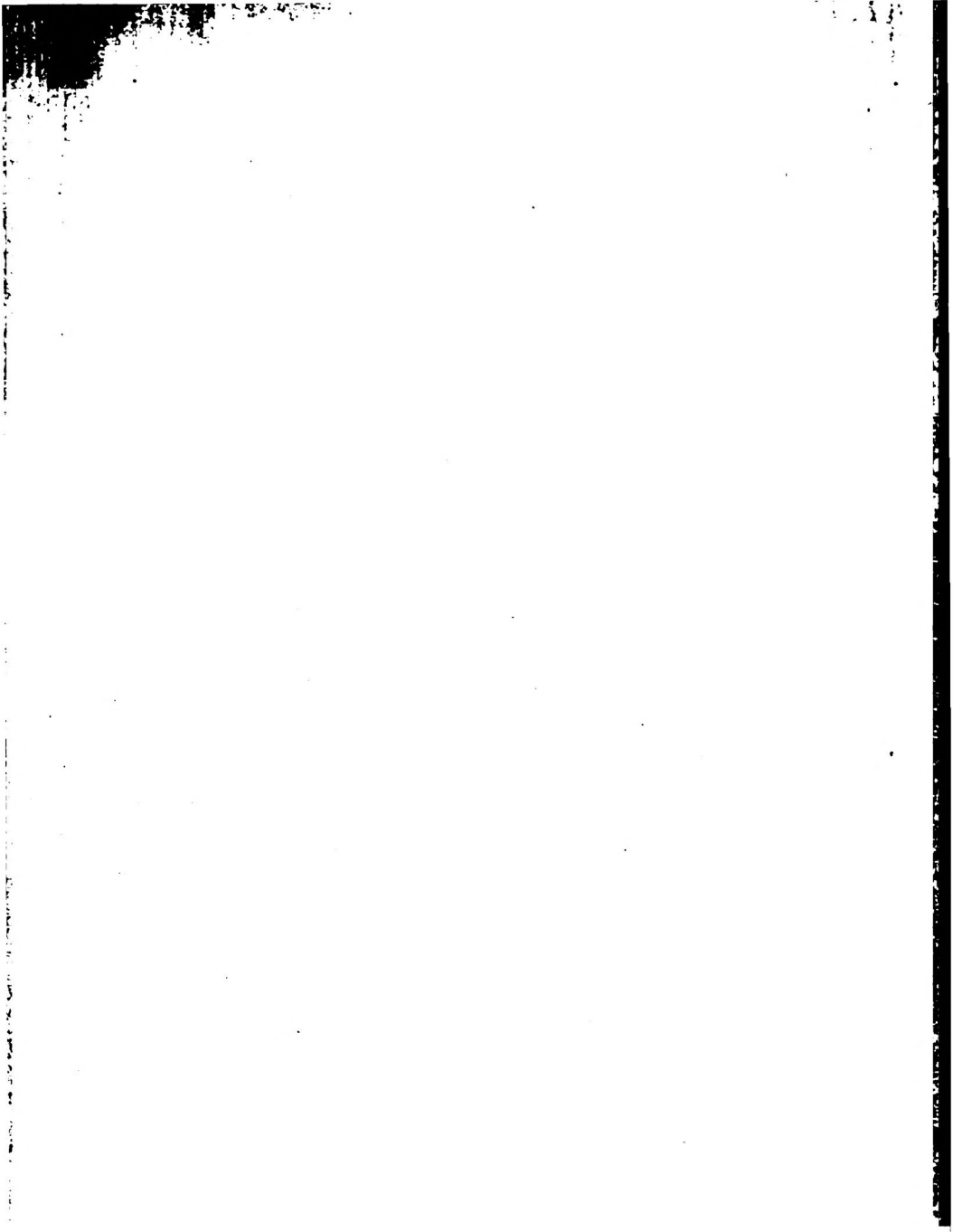
## CONTENTS

FRONTISPIECE. *Professor J. Rodes Buchanan*

|  | PAGE |  | PAGE |
|--|------|--|------|
| THE SCIENCE OF PSYCHOMETRY. <i>Professor<br/>J. Rodes Buchanan, M. D.</i> . . . .                                    | 101  | REVIEW OF THE REPORT OF THE COMMIT-<br>TEE ON SPIRITUALISM OF THE LONDON<br>DIALECTICAL SOCIETY. <i>Calvin W.<br/>Parsons</i> . . . . .              | 138  |
| SOME CASES OF PSYCHICAL DIAGNOSIS.<br><i>L. A. Phillips, M. D.</i> . . . .   | 106  | CEREBRAL RADIATION. <i>Professor Edwin<br/>J. Houston</i> . . . . .  | 150  |
| THE TOTALITY OF THE INDIVIDUAL MIND.<br><i>B. F. Underwood</i> . . . . .   | 111  | PSYCHICAL CASES AND REFLECTIONS FROM<br>PERIODICAL LITERATURE . . . . .  | 158  |
| PREJUDICE AND PSYCHICAL RESEARCH.<br><i>Rev. T. E. Allen</i> . . . . .   | 115  | SUMMARY OF ARTICLES . . . . .  | 170  |
| WHAT AND WHENCE IS THE INSPIRATION<br>OF ART? <i>L. H. Stone, Ph. D.</i> . . . .                                     | 126  | "Critical Study of Modern Mysticism," Dr. P. Rosen-<br>bach; "What Psychical Research Has Accom-<br>plished," Professor William Jones.               |      |
| EXPERIMENT IN PSYCHOGRAPHY: SLATES<br>SUSPENDED OUT OF REACH OF PSYCHIC.<br><i>Rabbi Solomon Schindler</i> . . . . . | 131  | EDITORIAL . . . . .  | 186  |
| AN EXPERIMENT IN PSYCHOGRAPHY.<br><i>Hamlin Garland</i> . . . . .  | 136  | Fifth General Meeting of American Psychical So-<br>ciety—The November Review—Plans for the Future<br>—Two Views of the Outcome of Psychical Studies. |      |

THE RESPONSIBILITY FOR ALL FACTS AND INFERENCES EMBODIED IN PAPERS PUBLISHED IN THIS JOURNAL  
RESTS ENTIRELY WITH CONTRIBUTORS.

BOSTON, MASS.  
AMERICAN PSYCHICAL SOCIETY  
ROOM 19, PIERCE BUILDING, COPLEY SQUARE



"Truth for authority, not authority for truth."

THE

# PSYCHICAL REVIEW

A QUARTERLY JOURNAL OF

*Psychical Science and Organ of the American  
Psychical Society*

VOLUME I.—NUMBER 3

FEBRUARY, 1893

## CONTENTS

FRONTISPICE. *Mr. Hamlin Garland.*

|   | PAGE |   | PAGE |
|---|------|---|------|
| THE SPECTRAL WELL OF VIRGINIA. <i>Profes-<br/>sor A. E. Dolbear and T. E. Allen</i> . . .                       | 197  | THE INTERNATIONAL CONGRESS OF EXPERI-<br>MENTAL PSYCHOLOGY. <i>Arthur Macdonald</i>   | 242  |
| QUESTS OF FULFILLED PROPHECIES. <i>M. Rylda</i><br>. . . . .  | 203  | THE SEARCH FOR FACTS. PART I. IMMEDIATE<br>AND MEDIATE TESTIMONY OF CONSCIOUS-<br>NESS. <i>T. E. Allen</i> . . . . .                                  | 246  |
| MYSTERIOUS MUSIC REVEALED THROUGH<br>A MEDIUM. <i>Hester M. Poole</i> . . . . .                                 | 207  | THE ORGANIZATION OF BRANCHES OF THE<br>AMERICAN PSYCHICAL SOCIETY . . . . .   | 256  |
| APPLICATIONS OF PHYSICAL PHENOMENA.<br>PART II. <i>Professor A. E. Dolbear</i> . . . . .                        | 211  | SUMMARIES OF ARTICLES . . . . .   | 260  |
| STORIES FROM THE AUTOBIOGRAPHY OF A<br>PSYCHIC. <i>Mrs. Emma Miner</i> . . . . .                                | 215  | "Mental Imagery," Alfred Binet; "Psychical Re-<br>search: Status and Theories," Rev. M. J. Savage;<br>"High Caste Indian Magic," Professor H. Kellar. |      |
| SONDS, VOICES, AND PHYSICAL DISTURB-<br>ANCES IN THE PRESENCE OF A PSYCHIC.<br><i>William Garland</i> . . . . . | 226  | PSYCHICAL CASES AND REFLECTIONS FROM<br>PERIODICAL LITERATURE . . . . .   | 281  |
| CONSCIOUS CEREBRATION. <i>Joel Hastings</i><br><i>Whitcomb, Ph. D.</i> . . . . .                                | 230  | EDITORIAL . . . . .   | 287  |

THE RESPONSIBILITY FOR ALL FACTS AND INFERENCES EMBODIED IN PAPERS PUBLISHED IN THIS JOURNAL  
RESTS ENTIRELY WITH CONTRIBUTORS.

BOSTON, MASS.

AMERICAN PSYCHICAL SOCIETY

ROOM 19, PIERCE BUILDING, COPLEY SQUARE

NO. 1, \$1.00

PUBLISHED QUARTERLY

PER ANNUM, \$3.00

Digitized by Google





"Truth for authority, not authority for truth."

# THE PSYCHICAL REVIEW

A QUARTERLY JOURNAL OF

*Psychical Science and Organ of the American  
Psychical Society*

VOLUME I.—NUMBER 4

MAY, 1893

## CONTENTS

FRONTISPIECE, *Mr. B. O. Flower*

|   | PAGE |  | PAGE |
|---|------|--|------|
| PSYCHICAL SCIENCE AND EDUCATION.<br><i>Arthur R. Ewell, Ph. D.</i> . . . . .  | 293  | A PLEA FOR PSYCHICAL RESEARCH. <i>Miles<br/>Menander Dawson</i> . . . . .  | 335  |
| SOME REASONS WHY MEDIUMS DO NOT AID<br>THE A. P. S. IN ITS INVESTIGATIONS.<br><i>Samuel H. Terry, with notes by the Editor.</i> . . . .                 | 302  | AN AGNOSTIC AT A SEANCE. <i>J. C. F.<br/>Grumbine, with notes by the Editor.</i> . . . .   | 341  |
| THE DOUBLE PERSONALITY, AND THE RELATION<br>OF THE SUBMERGED PERSONALITY TO<br>THE PHENOMENA OF MODERN SPIRITUAL-<br>ISM. <i>A. N. Somers</i> . . . . . | 314  | MYSTERIOUS MUSIC. <i>Ella Wilson Marchant</i> . . . . .  | 353  |
| TWO INTERESTING PSYCHICAL CASES. <i>B. O.<br/>Flower</i> . . . . .  | 324  | A VISION OF MY MOTHER. <i>Martha T.<br/>Hamilton</i> . . . . .   | 358  |
| PHENOMENA CONNECTED WITH THE TRANSITION<br>OF A LADY. <i>Professor Wm. A.<br/>Baldwin</i> . . . . .   | 327  | EGO AND NON-EGO. <i>D. G. Watts</i> . . . . .  | 360  |
| THE PSYCHICAL SCIENCE CONGRESS . . . . .  | 331  | THE SEARCH FOR FACTS. PART II. MEM-<br>ORY AS A FACTOR. <i>T. E. Allen</i> . . . . .   | 366  |
|   |      | PSYCHICAL CASES AND REFLECTIONS FROM<br>PERIODICAL LITERATURE . . . . .  | 373  |
|   |      | EDITORIAL . . . . .  | 379  |
|   |      | Reply to Critics—Officers of the American Psychical<br>Society for 1893—Work of the Branches—The<br>Future Work of the Review—Dr. Momerie upon<br>Immortality. |      |

THE RESPONSIBILITY FOR ALL FACTS AND INFERENCES EMBODIED IN PAPERS PUBLISHED IN THIS JOURNAL  
RESTS ENTIRELY WITH CONTRIBUTORS.

GRAFTON, MASS.

AMERICAN PSYCHICAL SOCIETY

BOSTON OFFICE: ROOM 19, PIERCE BUILDING, COPLEY SQUARE





# A Notable Clubbing Offer.

## THE ARENA, The Great Liberal Review of America, AND THE PSYCHICAL REVIEW.

### Arena Announcement for 1893.    Psychical Science Discussed by Master Brains.

The series of psychical papers by leading scientific investigators, which has created so much interest, will be continued during the ensuing year. *The Arena* was the first great review of the world to attempt anything like a comprehensive presentation of little understood facts relating to psychical phenomena of our time. These papers, prepared by many of the most eminent thinkers of the day, have attracted general notice, as would naturally be the case when such persons as ALFRED RUSSEL WALLACE, CAMILLE FLAMMARION, REV. M. J. SAVAGE, and W. H. H. MYERS present facts, and seriously discuss evidence pertaining to a realm of thought which, until a few years since, was regarded beyond the pale of critical scientific research. Through *The Arena* many of our most careful thinkers have been led to investigate psychical problems, and from every section we have received many communications relating to these interesting papers, which indicate a far-reaching interest. Our papers for 1893, like those of the past, will be from the pens of persons recognized as careful, conservative, and competent scientific investigators.

Among other important features will be papers upon the following themes:—

The World's Progress during a Quarter of a Century. Social Conditions of To-Day. The Outlook, or Present-Day Tendencies. Women Wage-Earners of America and Europe. The Religious Problems of the Day. Educational Papers. Self Culture Papers. Bacon-Shakespeare Case. Critical Biographical Sketches. Short Stories. Prose Etchings and Pen Pictures. The Books of the Day.

*Each number contains the portrait of some leader of thought.*

|   |        |
|---|--------|
| ARENA, one year . . . . .                   | \$5.00 |
| PSYCHICAL REVIEW, one year . . . . .        | 3.00   |
|   | <hr/>  |
|   | \$8.00 |
| CLUB RATE for both to one address . . . . . | 6.00   |

Address T. E. ALLEN, Sec. A. P. S., Grafton, Mass.

### REV. M. J. SAVAGE'S NEW BOOK. PSYCHICS: FACTS AND THEORIES.

Of this work B. O. FLOWER, editor of *The Arena*, says:—

"This work is one of the most dignified and thoughtful discussions of Psychical problems ever written. It embodies the results of more than a score of years of patient research on the part of Mr. Savage, and contains a great number of intensely interesting and well-authenticated 'ghost stories.' Indeed, it cannot fail to prove as entertaining as fiction to the general reader, while for those who are interested in psychical research it will be welcomed as one of the ablest, most critical and important presentations of this subject which has appeared since the scientific world has taken cognizance of Psychical phenomena. This volume embraces the subject matter found in Mr. Savage's masterly series of papers which appeared in *THE ARENA* during 1892; also his discussion of Psychical Research published some time ago in the *Forum*, together with an important introductory paper."

The cloth copies contain a fine portrait of Mr. Savage.

PRICE: PAPER, 50c.; CLOTH, \$1.00.

Address orders to T. E. ALLEN, Grafton, Mass. Massey

# CONTENTS OF VOL. I, No. 1, AUGUST, 1892.

FRONTISPIECE. **Rev. M. J. Savage.**

## SOME ASSURED RESULTS IN PSYCHICAL SCIENCE AND THE PRESENT

|  |  |
|--|--|
| OUTLOOK  | <i>Rev. M. J. Savage</i>   |
| IMPLICATIONS OF PHYSICAL PHENOMENA               | <i>Professor A. E. Dolbear</i>   |
| PSYCHOGRAPHY IN THE PRESENCE OF MR. KEELER       | <i>Alfred R. Wallace, D. C. L.</i>   |
| UPON THE RELATIONS OF INVESTIGATORS AND PSYCHICS | <i>Rev. T. E. Allen</i>  |
| PSYCHOGRAPHY: REMARKABLE CASES                   | <i>B. O. Flower</i>  |
| PROCEEDINGS OF THE AMERICAN PSYCHICAL SOCIETY.   | Address by <i>Rev. M. J. Savage.</i> Reports upon Psychography by <i>Professor Dolbear, Rabbi Schindler, and Mr. Garland.</i> Discussion, etc. |

PSYCHICAL RESEARCH AND SCIENCE . . . . . *Rev. T. E. Allen*

PROFESSOR LODGE UPON PSYCHICAL RESEARCH.

PSYCHICAL CASES AND REFLECTIONS FROM PERIODICAL LITERATURE.

EDITORIAL. The *Psychical Review*—Our November Issue—An Earnest Word to Our Readers—Branch Societies—Implications of the Spiritistic Hypothesis—The First Year's Work—The Reports upon Psychography—One Way to Help on the Work.

# CONTENTS OF VOL. I, No. 2, NOVEMBER, 1892.

FRONTISPIECE. **Professor J. Rodes Buchanan.**

|  |   |
|--|---|
| THE SCIENCE OF PSYCHOMETRY                 | <i>Professor J. Rodes Buchanan, M. D.</i> |
| SOME CASES OF PSYCHICAL DIAGNOSIS          | <i>L. A. Phillips, M. D.</i>              |
| THE TOTALITY OF THE INDIVIDUAL MIND        | <i>B. F. Underwood</i>                    |
| PREJUDICE AND PSYCHICAL RESEARCH           | <i>Rev. T. E. Allen</i>                   |
| WHAT AND WHENCE IS THE INSPIRATION OF ART? | <i>L. H. Stone, Ph. D.</i>                |

EXPERIMENT IN PSYCHOGRAPHY: SLATES SUSPENDED OUT OF REACH OF PSYCHIC . . . . . *Rabbi Solomon Schindler*

AN EXPERIMENT IN PSYCHOGRAPHY . . . . . *Hamlin Garland*

REVIEW OF THE REPORT OF THE COMMITTEE ON SPIRITUALISM OF THE LONDON DIALECTICAL SOCIETY . . . . . *Calvin W. Parsons*

CEREBRAL RADIATION . . . . . *Professor Edwin J. Houston*

PSYCHICAL CASES AND REFLECTIONS FROM PERIODICAL LITERATURE.

SUMMARY OF ARTICLES. "Critical Study of Modern Mysticism," *Dr. P. Rosenbach*; "What Psychical Research has Accomplished," *Professor William James*.

EDITORIAL. Fifth General Meeting of the American Psychical Society—the November Review—Plans for the Future—Two Views of the Outcome of Psychical Studies.

## AMERICAN PSYCHICAL SOCIETY.

Organized for the Scientific Investigation of the Phenomena of Modern Spiritualism.

Correspondence solicited with all persons interested.

**General Meetings Held in Boston.**

FEES PER ANNUM.

Active Members, \$5.00. 20s. sterling. Associate Members, \$3.00. 12s. sterling.

All members receive *THE PSYCHICAL REVIEW* free of charge.

Branch Societies may be organized.

## THE PSYCHICAL REVIEW.

A Quarterly Journal of Psychical Science, and Organ of the American Psychical Society.

Published February, May, August, and November. Vol. I., No. 1, AUGUST, 1892.

SUBSCRIPTION PRICE PER ANNUM.

To Members of the A. P. S., FREE.

To Non-Members, \$3.00. 12s. sterling. Single Copies, \$1.00. 4s. sterling.

Foreign subscribers should remit by International Postal Order, payable in Boston, or by draft payable in New York or Boston.

Prospectus of the American Psychical Society and of *THE PSYCHICAL REVIEW* sent free upon application.

Address all communications to

**T. E. ALLEN, Secretary and Treasurer,**

**GRAFTON, MASS.**